

F.A.P. RTE.	SECTION	COUNTY	TOTAL SHEETS	SHEET NO.
310	69-3(3HB)	MORGAN	793	206
STA.		TO STA.		
FED. ROAD DIST. NO.	ILLINOIS	FED. AID PROJECT		

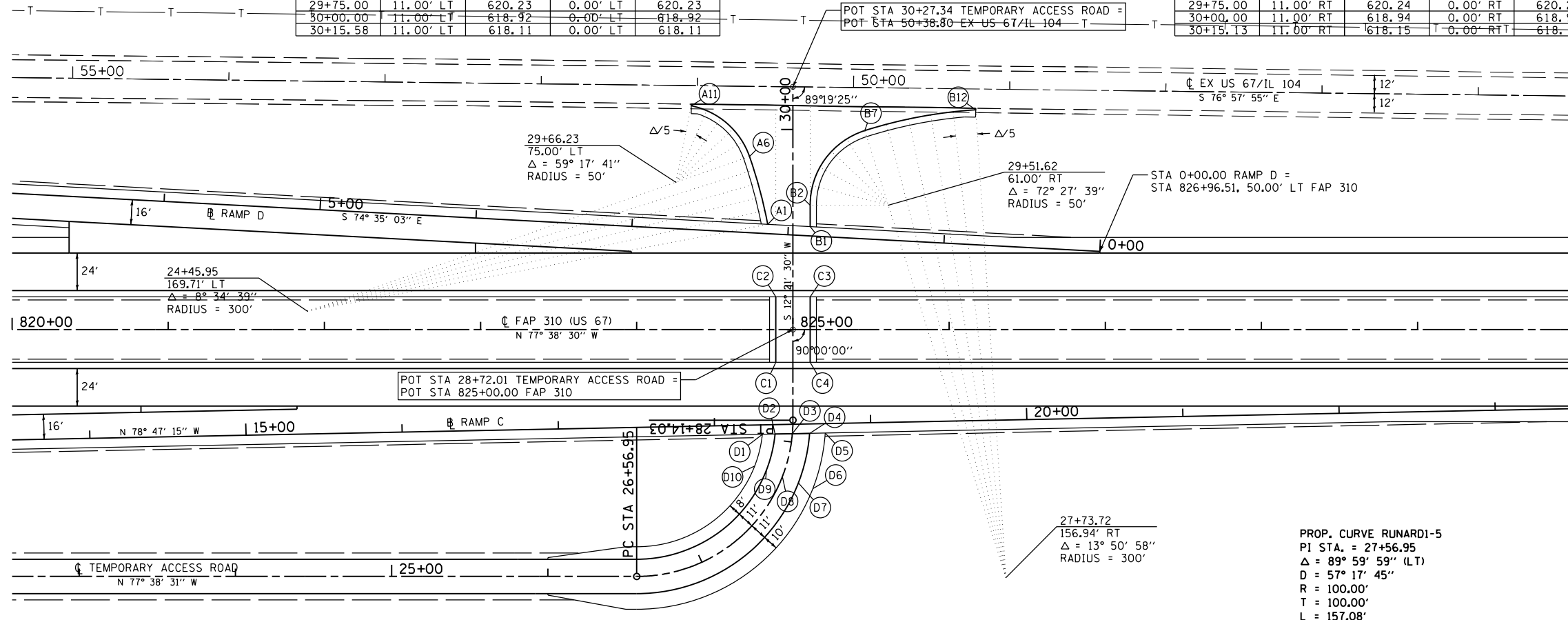
	TEMPORARY ACCESS ROAD	EX US 67/IL 104	FAP 310	ELEVATION			
A1	29+39.38	16.20' LT	50+53.97	88.15' LT	824+83.80	67.37' LT	622.09
A2	29+48.18	18.00' LT	50+55.87	79.37' LT	824+82.00	76.17' LT	621.56
A3	29+56.92	20.06' LT	50+58.03	70.66' LT	824+79.94	84.91' LT	621.02
A4	29+65.60	22.38' LT	50+60.46	62.01' LT	824+77.62	93.59' LT	620.44
A5	29+74.20	24.96' LT	50+63.14	53.43' LT	824+75.04	102.19' LT	619.83
A6	29+82.72	27.80' LT	50+66.07	44.95' LT	824+72.20	110.71' LT	619.17
A7	29+92.07	32.20' LT	50+70.58	35.65' LT	824+67.80	120.06' LT	618.43
A8	30+00.31	38.42' LT	50+76.90	27.48' LT	824+61.58	128.31' LT	617.97
A9	30+07.10	46.21' LT	50+84.77	20.78' LT	824+53.79	135.10' LT	617.86
A10	30+12.15	55.22' LT	50+93.84	15.85' LT	824+44.78	140.14' LT	617.95
A11	30+15.23	65.08' LT	51+03.74	12.88' LT	824+34.92	143.22' LT	618.04

	TEMPORARY ACCESS ROAD	EX US 67/IL 104	FAP 310	ELEVATION			
B1	29+37.92	11.00' RT	50+26.75	89.28' LT	825+11.00	65.92' LT	622.17
B2	29+51.62	11.00' RT	50+26.91	75.59' LT	825+11.00	79.61' LT	621.46
B3	29+64.13	12.59' RT	50+25.47	63.06' LT	825+12.59	92.12' LT	620.78
B4	29+75.85	17.26' RT	50+20.93	51.29' LT	825+17.26	103.84' LT	619.97
B5	29+86.02	24.72' RT	50+13.60	41.03' LT	825+24.72	114.01' LT	618.81
B6	29+94.01	34.48' RT	50+03.93	32.93' LT	825+34.48	122.00' LT	618.01
B7	29+99.29	45.93' RT	49+92.54	27.51' LT	825+45.93	127.29' LT	617.96
B8	30+03.33	59.86' RT	49+78.66	23.31' LT	825+59.86	131.32' LT	618.02
B9	30+06.69	73.97' RT	49+64.60	19.78' LT	825+73.97	134.68' LT	618.09
B10	30+09.36	88.22' RT	49+50.38	16.94' LT	825+88.22	137.35' LT	618.16
B11	30+11.34	102.59' RT	49+36.03	14.80' LT	826+02.59	139.33' LT	618.22
B12	30+12.62	117.03' RT	49+21.61	13.34' LT	826+17.03	140.61' LT	618.29

NOTE: ELEVATIONS SHOWN ARE FOR MATCHING INTO EXISTING US 67/IL 104 EDGE OF PAVEMENT.  
ADDITIONAL HOT-MIX ASPHALT WILL BE REQUIRED TO TIE INTO THE PROPOSED US 67 FRONTAGE ROAD.

STATION	OFFSET	ELEVATION	OFFSET	ELEVATION
29+39.10	11.00' LT	622.11	0.00' LT	622.11
29+50.00	11.00' LT	621.54	0.00' LT	621.54
29+75.00	11.00' LT	620.23	0.00' LT	620.23
30+00.00	11.00' LT	618.92	0.00' LT	618.92
30+15.58	11.00' LT	618.11	0.00' LT	618.11

STATION	OFFSET	ELEVATION	OFFSET	ELEVATION
29+37.92	11.00' RT	622.17	0.00' RT	622.16
29+50.00	11.00' RT	621.54	0.00' RT	621.54
29+75.00	11.00' RT	620.24	0.00' RT	620.23
30+00.00	11.00' RT	618.94	0.00' RT	618.92
30+15.13	11.00' RT	618.15	0.00' RT	618.14



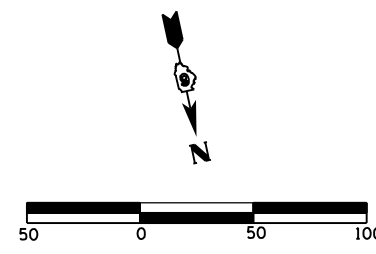
	TEMPORARY ACCESS ROAD	FAP 310	ELEVATION		
C1	28+51.01	11.00' LT	824+89.00	21.00' RT	622.37
C2	28+93.01	11.00' LT	824+89.00	21.00' LT	622.37
C3	28+93.01	11.00' RT	825+11.00	21.00' LT	622.41
C4	28+51.01	11.00' RT	825+11.00	21.00' RT	622.41

	TEMPORARY ACCESS ROAD	ELEVATION	
D1	28+02.81	19.00' LT	622.03
D2	28+04.01	11.00' LT	622.05
D3	28+05.33	0.00' RT	622.07
D4	28+06.40	11.00' RT	622.10
D5	28+07.20	21.00' RT	622.12
D6	27+77.01	21.00' RT	621.13
D7	27+77.01	11.00' RT	621.73
D8	27+77.01	0.00' RT	621.51
D9	27+77.01	11.00' LT	621.29
D10	27+77.01	19.00' LT	620.81

PROP. CURVE RUNARD1-5  
 PI STA. = 27+56.95  
 $\Delta = 89^\circ 59' 59''$  (LT)  
 D = 57' 17' 45"  
 R = 100.00'  
 T = 100.00'  
 L = 157.08'  
 E = 41.42'  
 $e = 0.02$   
 P.C. STA. = 26+56.95  
 P.T. STA. = 28+14.03  
 S.E. TRANSITION  
 STA 26+07.00 TO STA 26+67.00  
 STA 27+77.01 TO STA 28+04.01

Mar-30-2011 08:45:06AM

\$FILE\$



REVISIONS	
NAME	DATE

ILLINOIS DEPARTMENT OF TRANSPORTATION  
 GEOMETRIC DETAILS  
 TEMPORARY ACCESS ROAD  
 FAP 310 (US 67/IL 104)  
 SHEET 1 OF 23  
 DATE 5/06  
 DRAWN BY EBB  
 CHECKED BY