

F.A.P. RTE.	SECTION	COUNTY	TOTAL SHEETS	SHEET NO.
310	69-3(3HB)	MORGAN	793	207
STA.		TO STA.		
FED. ROAD DIST. NO.	ILLINOIS	FED. AID PROJECT		

CONCORD ROAD & EOP ELEVATIONS

STATION	OFFSET	ELEVATION	OFFSET	ELEVATION
7+25.45	9.00' RT	624.90	23.00' RT	624.89
7+50.00	9.00' RT	624.66	23.00' RT	624.57
7+75.00	9.00' RT	624.46	23.00' RT	624.28
7+85.45	9.00' RT	624.39	23.00' RT	624.18

CONCORD ROAD & EOP ELEVATIONS

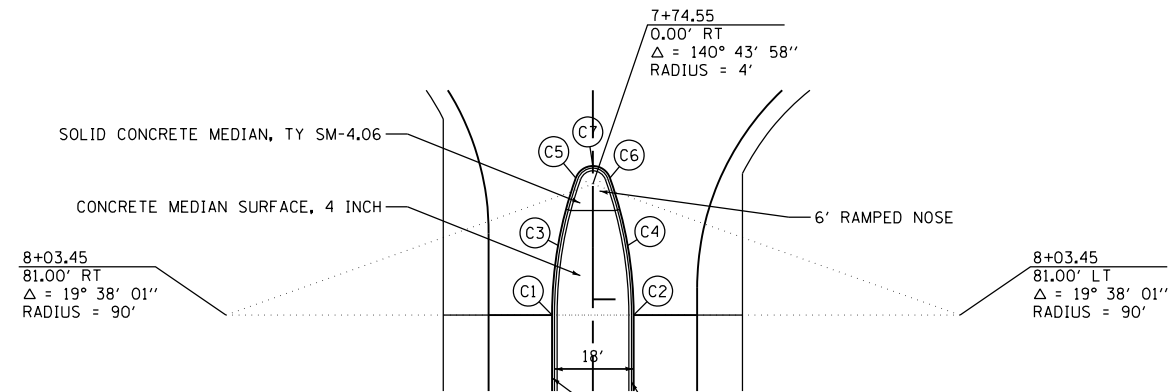
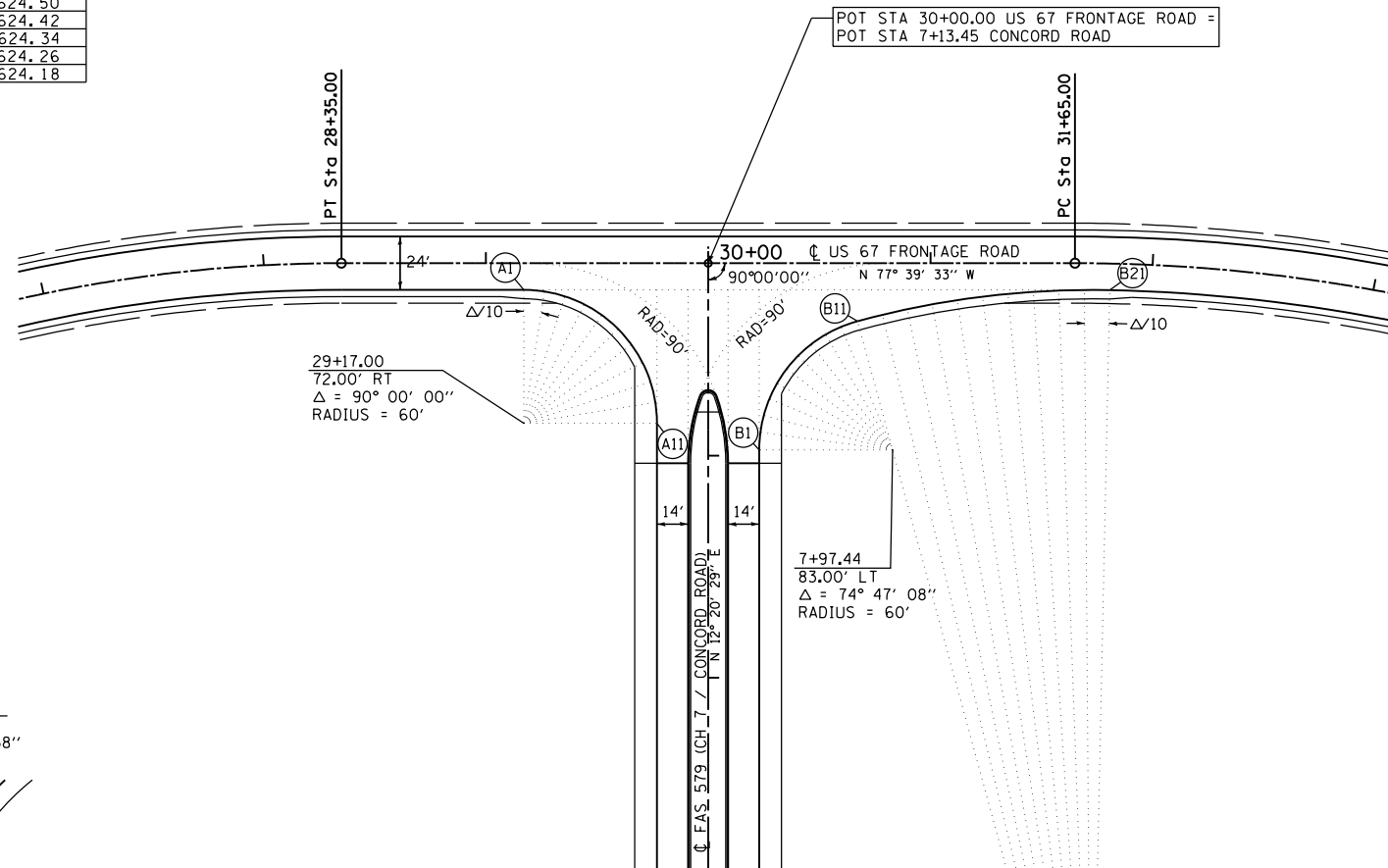
STATION	OFFSET	ELEVATION	OFFSET	ELEVATION
7+25.45	9.00' LT	624.90	23.00' LT	624.89
7+50.00	9.00' LT	624.66	23.00' LT	624.58
7+75.00	9.00' LT	624.46	23.00' LT	624.31
7+97.44	9.00' LT	624.32	23.00' LT	624.11

	US 67 FRONTAGE ROAD		CONCORD ROAD		ELEVATION
B1	30+23.00	83.99' RT	7+97.44	23.00' LT	624.11
B2	30+23.51	76.18' RT	7+89.63	23.51' LT	624.16
B3	30+25.03	68.51' RT	7+81.96	25.03' LT	624.21
B4	30+27.54	61.09' RT	7+74.54	27.54' LT	624.26
B5	30+30.99	54.07' RT	7+67.52	30.99' LT	624.31
B6	30+35.33	47.56' RT	7+61.00	35.33' LT	624.36
B7	30+40.48	41.66' RT	7+55.11	40.48' LT	624.41
B8	30+46.35	36.49' RT	7+49.94	46.35' LT	624.46
B9	30+52.84	32.12' RT	7+45.57	52.84' LT	624.50
B10	30+59.85	28.64' RT	7+42.09	59.85' LT	624.55
B11	30+67.26	26.10' RT	7+39.54	67.26' LT	624.59
B12	30+78.36	23.25' RT	7+36.69	78.36' LT	624.59
B13	30+89.54	20.72' RT	7+34.16	89.54' LT	624.52
B14	31+00.79	18.51' RT	7+31.96	100.79' LT	624.43
B15	31+12.09	16.62' RT	7+30.07	112.09' LT	624.33
B16	31+23.45	15.06' RT	7+28.51	123.45' LT	624.23
B17	31+34.85	13.83' RT	7+27.27	134.84' LT	624.13
B18	31+46.27	12.92' RT	7+26.37	146.27' LT	624.03
B19	31+57.72	12.34' RT	7+25.79	157.72' LT	623.90
B20	31+69.25	12.08' RT	7+25.54	169.18' LT	623.77
B21	31+80.90	12.00' RT	7+25.61	180.65' LT	623.63

	US 67 FRONTAGE ROAD		CONCORD ROAD		ELEVATION
A1	29+17.00	12.00' RT	7+25.45	83.00' LT	624.73
A2	29+26.39	12.74' RT	7+26.19	73.61' LT	624.77
A3	29+35.54	14.94' RT	7+28.39	64.46' LT	624.78
A4	29+44.24	18.54' RT	7+31.99	55.76' LT	624.74
A5	29+52.27	23.46' RT	7+36.91	47.73' LT	624.66
A6	29+59.43	29.57' RT	7+43.02	40.57' LT	624.58
A7	29+65.54	36.73' RT	7+50.18	34.46' LT	624.50
A8	29+70.46	44.76' RT	7+58.21	29.54' LT	624.42
A9	29+74.06	53.46' RT	7+66.91	25.94' LT	624.34
A10	29+76.26	62.61' RT	7+76.06	23.74' LT	624.26
A11	29+77.00	72.00' RT	7+85.45	23.00' LT	624.18

PROP. CURVE CON-FR-2
 PI STA. = 24+93.02
 $\Delta = 69^\circ 15' 10''$ (RT)
 $D = 8^\circ 40' 52''$
 $R = 660.00'$
 $T = 455.75'$
 $L = 797.73'$
 $E = 142.07'$
 $e = 0.080$
 P.C. STA. = 20+37.26
 P.T. STA. = 28+35.00
 S.E. TRANSITION
 STA 18+93.00 TO STA 20+71.00
 STA 27+76.00 TO STA 29+88.00

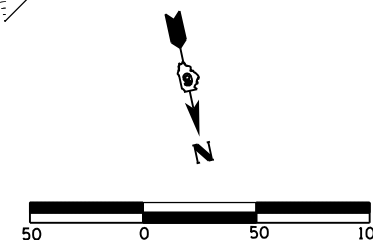
PROP. CURVE CON-FR-3
 PI STA. = 36+54.30
 $\Delta = 65^\circ 53' 36''$ (RT)
 $D = 7^\circ 35' 20''$
 $R = 755.00'$
 $T = 489.30'$
 $L = 868.29'$
 $E = 144.69'$
 $e = 0.080$
 P.C. STA. = 31+65.00
 P.T. STA. = 40+33.29
 S.E. TRANSITION
 STA 30+12.00 TO STA 32+24.00
 STA 39+85.00 TO STA 41+63.00



	US 67 FRONTAGE ROAD		ELEVATION
C1	8+03.45	9.00' RT	624.29
C2	8+03.45	9.00' LT	624.29
C3	7+88.10	7.68' RT	624.37
C4	7+88.10	7.68' LT	624.37
C5	7+73.21	3.77' RT	624.47
C6	7+73.21	3.77' LT	624.47
C7	7+70.55	0.00' RT	624.49

MEDIAN NOSE DETAIL

31+80.90
 412.00' RT
 $\Delta = 16^\circ 25' 13''$
 RADIUS = 400'



REVISIONS	
NAME	DATE

ILLINOIS DEPARTMENT OF TRANSPORTATION
 GEOMETRIC DETAILS
 INTERSECTION OF CONCORD ROAD
 AND US 67 FRONTAGE ROAD
 FAP 310 (US 67/IL 104)
 SHEET 2 OF 23

DATE 5/06
 DRAWN BY EBB
 CHECKED BY