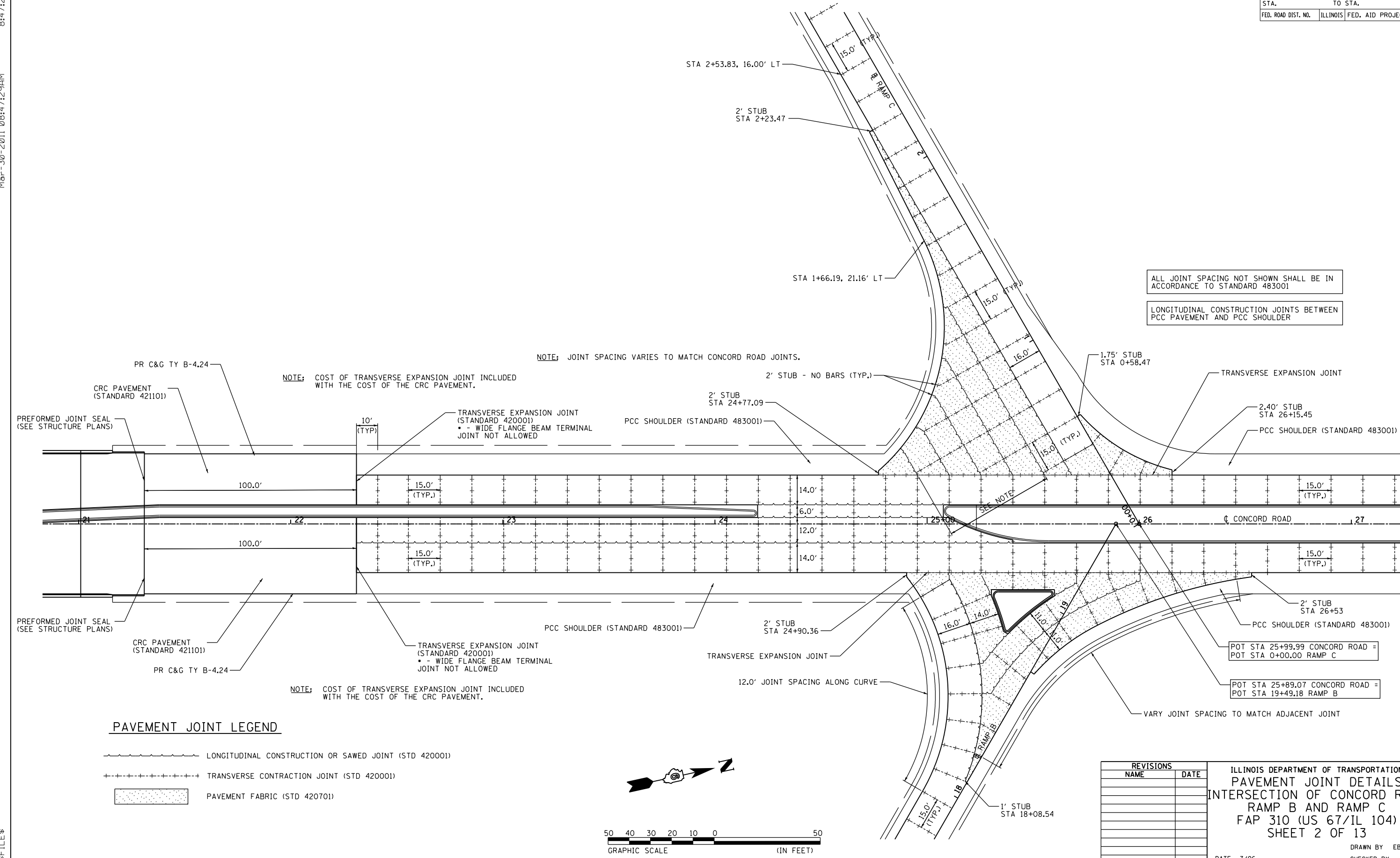


8:47:29 AM
Mar-30-2011 08:47:29AM

CONTRACT NO. 72667

F.A.P. RTE.	SECTION	COUNTY	TOTAL SHEETS	SHEET NO.
310	69-3(3HB)	MORGAN	793	230
STA.		TO STA.		
FED. ROAD DIST. NO.	ILLINOIS	FED. AID PROJECT		



ALL JOINT SPACING NOT SHOWN SHALL BE IN ACCORDANCE TO STANDARD 483001

LONGITUDINAL CONSTRUCTION JOINTS BETWEEN PCC PAVEMENT AND PCC SHOULDER

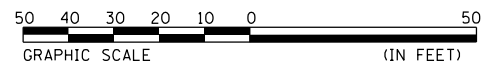
NOTE: JOINT SPACING VARIES TO MATCH CONCORD ROAD JOINTS.

NOTE: COST OF TRANSVERSE EXPANSION JOINT INCLUDED WITH THE COST OF THE CRC PAVEMENT.

NOTE: COST OF TRANSVERSE EXPANSION JOINT INCLUDED WITH THE COST OF THE CRC PAVEMENT.

PAVEMENT JOINT LEGEND

- LONGITUDINAL CONSTRUCTION OR SAWED JOINT (STD 420001)
- TRANSVERSE CONTRACTION JOINT (STD 420001)
- PAVEMENT FABRIC (STD 420701)



REVISIONS	
NAME	DATE

ILLINOIS DEPARTMENT OF TRANSPORTATION
 PAVEMENT JOINT DETAILS
 INTERSECTION OF CONCORD ROAD
 RAMP B AND RAMP C
 FAP 310 (US 67/IL 104)
 SHEET 2 OF 13

DATE 7/06
 DRAWN BY EBB
 CHECKED BY

\$FILE\$