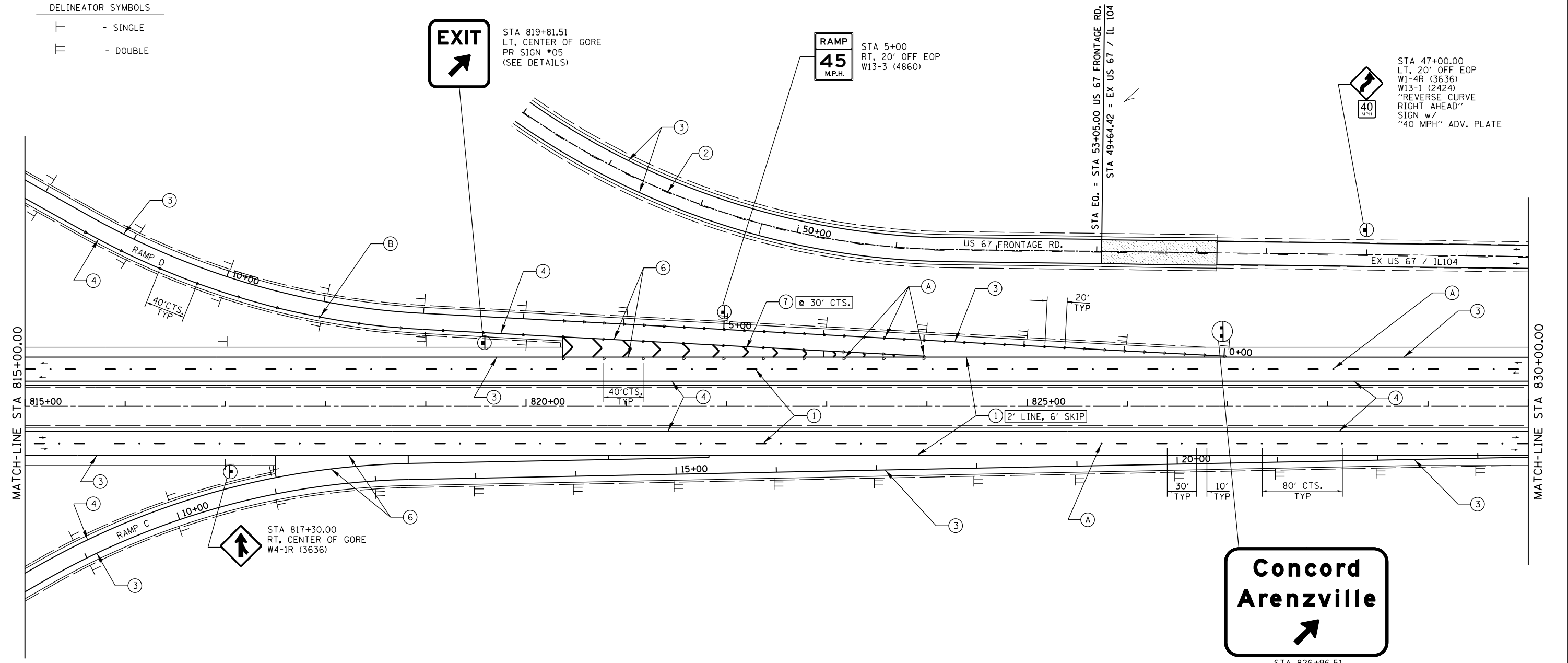


DELINEATOR SYMBOLS

— —	- SINGLE
— — —	- DOUBLE



STA 47+00.00
LT, 20' OFF EOP
W1-4R (3636)
W13-1 (2424)
"REVERSE CURVE
RIGHT AHEAD"
SIGN w/
"40 MPH" ADV. PLATE

RAMP
45
M.P.H.
STA 5+00
RT, 20' OFF EOP
W13-3 (4860)

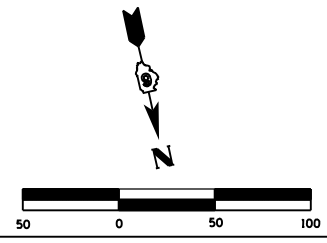
STA 817+30.00
RT, CENTER OF GORE
W4-1R (3636)

**Concord
Arenzville**
↑

STA 826+96.51
LT, 36' OFF EOP
PR SIGN #04
(SEE DETAILS)

PAVEMENT MARKING LEGEND

- (A) PR RAISED REFLECTIVE PAVEMENT MARKERS, ONE-WAY CRYSTAL
- (B) PR RAISED REFLECTIVE PAVEMENT MARKERS, ONE-WAY AMBER
- (C) PR RAISED REFLECTIVE PAVEMENT MARKERS, TWO-WAY AMBER
- (1) PR URETHANE PAVEMENT MARKING- LINE 5" (WHITE SKIP DASH)
- (2) PR URETHANE PAVEMENT MARKING- LINE 5" (YELLOW SKIP DASH)
- (3) PR URETHANE PAVEMENT MARKING- LINE 5" (SOLID WHITE)
- (4) PR URETHANE PAVEMENT MARKING- LINE 5" (SOLID YELLOW)
- (5) PR URETHANE PAVEMENT MARKING- LINE 6" (SOLID WHITE)
- (6) PR PREFORMED PLASTIC PAVEMENT MARKING- LINE 8" (SOLID WHITE)
- (7) PR PREFORMED PLASTIC PAVEMENT MARKING- LINE 12" (SOLID WHITE)
- (8) PR PREFORMED PLASTIC PAVEMENT MARKING- LINE 12" (SOLID YELLOW)
- (9) PR PREFORMED PLASTIC PAVEMENT MARKING- LINE 24" (SOLID WHITE)
- (10) PR PREFORMED PLASTIC PAVEMENT MARKING- LETTERS & SYMBOLS (LARGE ARROWS= 15.6 SF/EACH)



FILE NAME =	USER NAME = sparksgw	DESIGNED -	REVISED -
c:\pwwork\pwwork\sparksgw\10264881\Signs-main\line_ib.v8.dgn		DRAWN -	REVISED -
	PLOT SCALE = 100.0000' / in.	CHECKED -	REVISED -
	PLOT DATE = Mar-30-2011 08:49:04AM	DATE -	REVISED -

STATE OF ILLINOIS
DEPARTMENT OF TRANSPORTATION

STRIPING & SIGNING PLAN SHEETS
FAP 310 (US 67)

SCALE:	SHEET NO.	OF	SHEETS	STA.	TO	STA.
--------	-----------	----	--------	------	----	------

F.A.P. RTE.	SECTION	COUNTY	TOTAL SHEETS	SHEET NO.
310	69-3	MORGAN	793	247
CONTRACT NO. 72667				
FED. ROAD DIST. NO. ILLINOIS FED. AID PROJECT				