

STA 593+90.00
CENTERLINE
R11-1100 (3636)
2-0M4-1 (1818)
"ROAD ENDS"
w/ 2- OBJECT MARKERS

STA 87+50.00
LT, 20' OFF EOP
W3-1a (3636)
"STOP AHEAD"

STA 90+00.00
LT, 20' OFF EOP
W2-2R (3636)
"SIDE ROAD SYMBOL 90 RT"

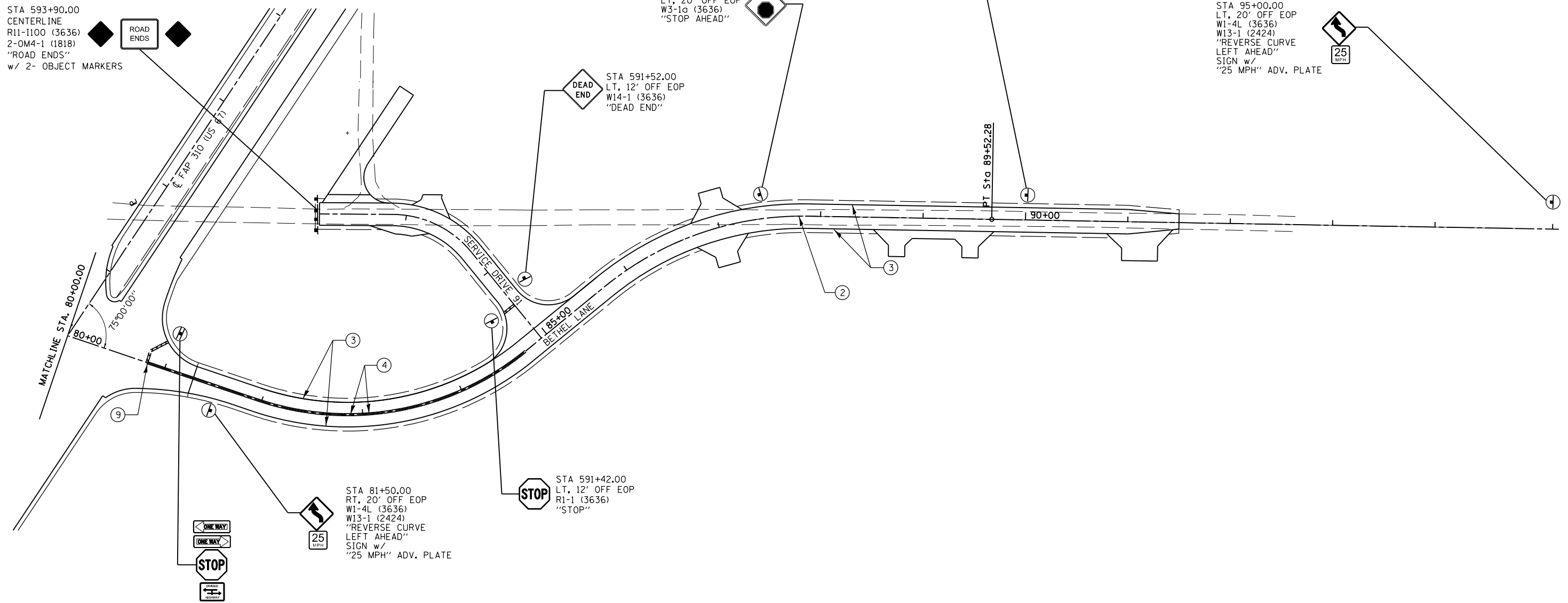
STA 95+00.00
LT, 20' OFF EOP
W1-4L (3636)
W13-1 (2424)
"REVERSE CURVE
LEFT AHEAD"
SIGN w/
"25 MPH" ADV. PLATE

STA 591+52.00
LT, 12' OFF EOP
W14-1 (3636)
"DEAD END"

STA 81+50.00
RT, 20' OFF EOP
W1-4L (3636)
W13-1 (2424)
"REVERSE CURVE
LEFT AHEAD"
SIGN w/
"25 MPH" ADV. PLATE

STA 591+42.00
LT, 12' OFF EOP
R1-1 (3636)
"STOP"

TYPICAL SIDE STREET
STOP SIGN INSTALLATION
STA 955+82.00



PAVEMENT MARKING LEGEND

- (A) PR RAISED REFLECTIVE PAVEMENT MARKERS, ONE-WAY CRYSTAL
- (B) PR RAISED REFLECTIVE PAVEMENT MARKERS, ONE-WAY AMBER
- (C) PR RAISED REFLECTIVE PAVEMENT MARKERS, TWO-WAY AMBER
- (1) PR URETHANE PAVEMENT MARKING- LINE 5" (WHITE SKIP DASH)
- (2) PR URETHANE PAVEMENT MARKING- LINE 5" (YELLOW SKIP DASH)
- (3) PR URETHANE PAVEMENT MARKING- LINE 5" (SOLID WHITE)
- (4) PR URETHANE PAVEMENT MARKING- LINE 5" (SOLID YELLOW)
- (5) PR URETHANE PAVEMENT MARKING- LINE 6" (SOLID WHITE)
- (6) PR URETHANE PAVEMENT MARKING- LINE 8" (SOLID WHITE)
- (7) PR URETHANE PAVEMENT MARKING- LINE 12" (SOLID WHITE)
- (8) PR URETHANE PAVEMENT MARKING- LINE 12" (SOLID YELLOW)
- (9) PR PREFORMED PLASTIC PAVEMENT MARKING- LINE 24" (SOLID WHITE)
- (10) PR PREFORMED PLASTIC PAVEMENT MARKING- LETTERS & SYMBOLS (LARGE ARROWS= 15.6 SF/EACH)

TYPICAL SIDE STREET STOP SIGN INSTALLATION

R6-1L (3612) "ONE WAY LT"
BACK TO BACK
R6-1R (3612) "ONE WAY RT"

R1-1 (3636) "STOP"
R6-3A (2418) "DIVIDED HIGHWAY"

INSTALL ON 2 TELESCOPING STEEL POST

TYPICAL SIDE STREET YIELD SIGN INSTALLATION

R6-1L (3612) "ONE WAY LT"
BACK TO BACK
R6-1R (3612) "ONE WAY RT"

R1-2 (3636) "YIELD"

INSTALL ON 2 TELESCOPING STEEL POST

FILE NAME = c:\pw\work\p\dot\sparksgw\10264881\p&p	USER NAME = Sparksgw	DESIGNED -	REVISED -	STATE OF ILLINOIS DEPARTMENT OF TRANSPORTATION	STRIPING & SIGNING PLAN SHEETS BETHEL LANE			F.A.P. RTE.	SECTION	COUNTY	TOTAL SHEETS	SHEET NO.
	Sideroads1-14.dgn	DRAWN -	REVISED -					310	69-3	Morgan	793	288
	PLOT SCALE = 100.0000' / 1".	CHECKED -	REVISED -		SCALE:	SHEET NO.	OF SHEETS	STA.	TO STA.	CONTRACT NO. 72667		
	PLOT DATE = Mar-30-2011 08:49:51AM	DATE -	REVISED -		ILLINOIS FED. AID PROJECT							