

May-19-2011 09:29:03AM 9:29:03 AM

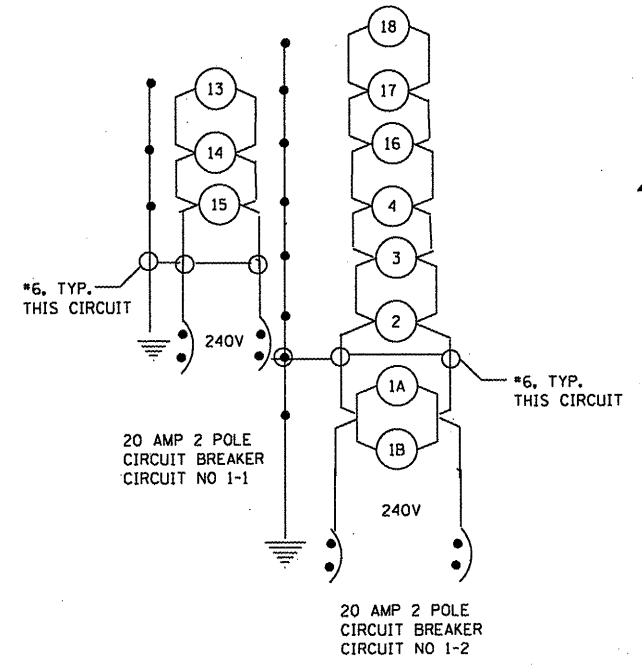
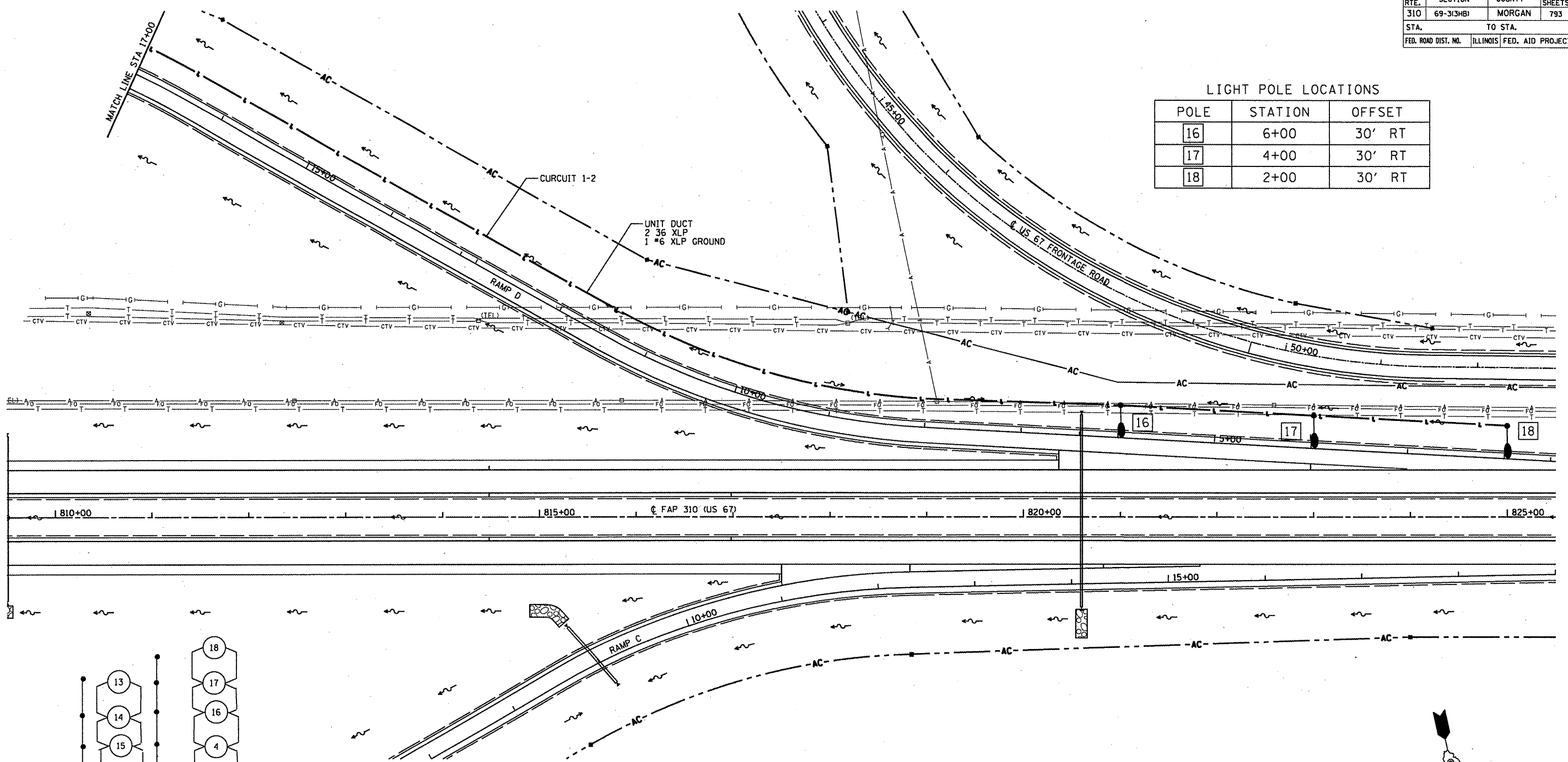
\$FILE\$

CONTRACT NO. 72667

F.A.P. RTE.	SECTION	COUNTY	TOTAL SHEETS	SHEET NO.
310	69-3(3HB)	MORGAN	793	311
STA. TO STA.		FED. ROAD DIST. NO. ILLINOIS FED. AID PROJECT		

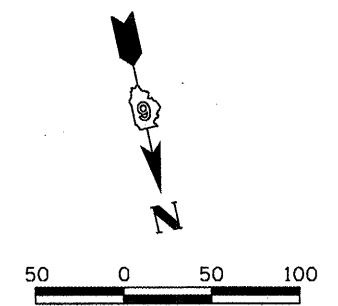
LIGHT POLE LOCATIONS

POLE	STATION	OFFSET
16	6+00	30' RT
17	4+00	30' RT
18	2+00	30' RT



**LEGEND**

- Electric Service Installation, 60 Amp 120/240V Single Phase
- ⊠ Lighting Controller, Pole Mounted 60 amp., 240 Volt
- Light Pole, Weathering Steel, 45 Ft. M.H., Tenon Mount With 250W HPS Multi-Mount Luminaire
- - - Unit Duct, 600 v. Size as indicated
- Conduit Length — XX' Type of Material Diameter — X"



REVISIONS	
NAME	DATE

ILLINOIS DEPARTMENT OF TRANSPORTATION  
**LIGHTING DETAILS**  
 RAMP D  
 FAP 310 (US 67)

DATE 9/09  
 DRAWN BY BGI  
 CHECKED BY