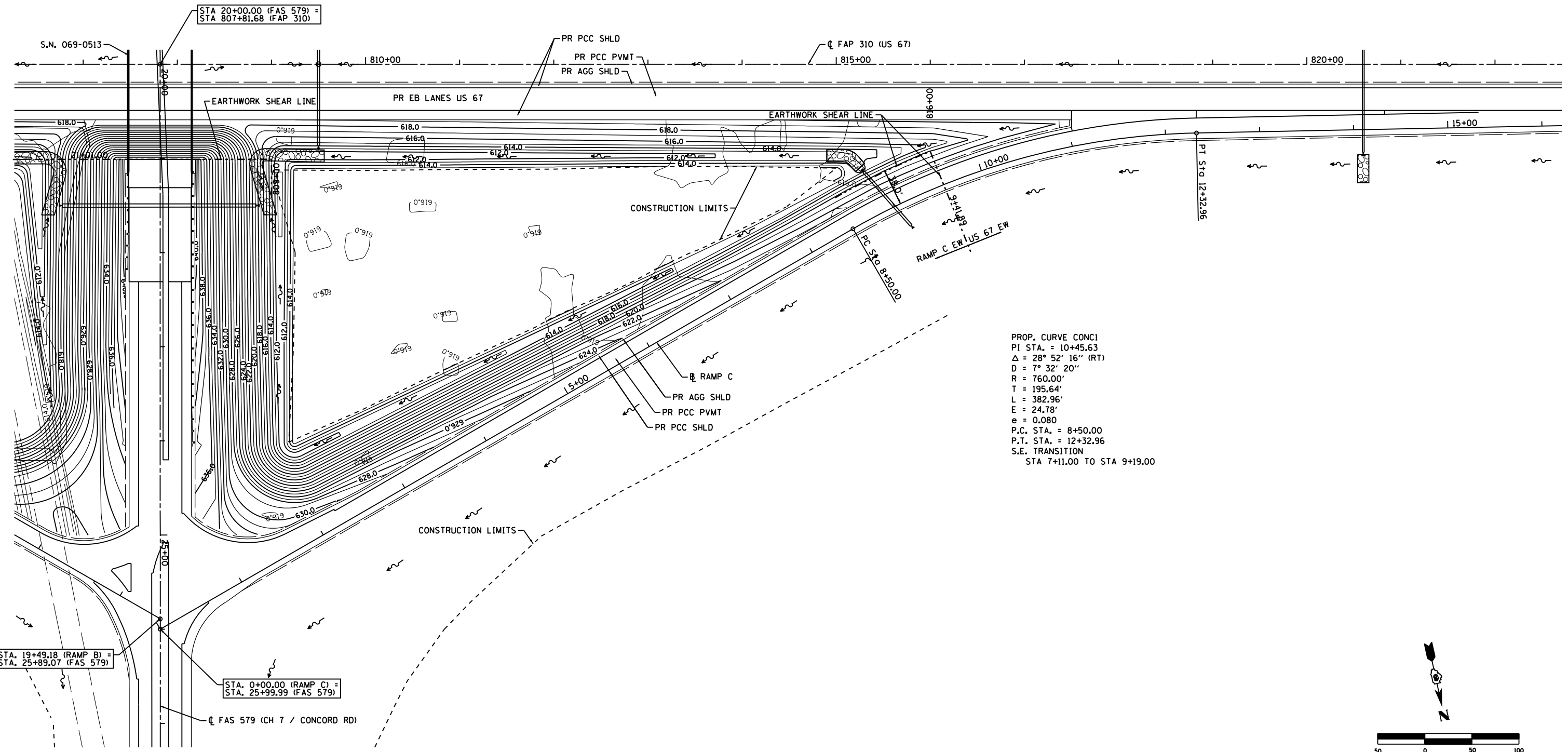


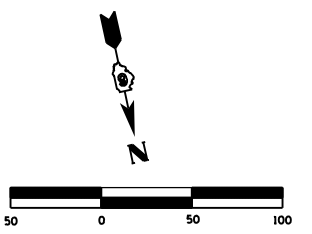
F.A.P. RTE.	SECTION	COUNTY	TOTAL SHEETS	SHEET NO.
310	69-3(3HB)	MORGAN	793	322
STA.		TO STA.		
FED. ROAD DIST. NO.	ILLINOIS	FED. AID PROJECT		

806100:28 AM

\$FILE\$



PROP. CURVE CONC1
 PI STA. = 10+45.63
 $\Delta = 28^\circ 52' 16''$ (RT)
 $D = 7^\circ 32' 20''$
 $R = 760.00'$
 $T = 195.64'$
 $L = 382.96'$
 $E = 24.78'$
 $e = 0.080$
 P.C. STA. = 8+50.00
 P.T. STA. = 12+32.96
 S.E. TRANSITION
 STA 7+11.00 TO STA 9+19.00



REVISIONS	
NAME	DATE

ILLINOIS DEPARTMENT OF TRANSPORTATION
 INTERCHANGE INFIELD
 GRADING PLAN
 RAMP C
 FAP 310 (US 67) & CONCORD RD

DATE 3/09
 DRAWN BY SEB
 CHECKED BY