

ROUTE NO.	SECTION	COUNTY	TOTAL SHEETS	SHEET NO.
F.A.S. 579	69-3(3HB)	MORGAN	793	328
FED. ROAD DIST. NO.	ILLINOIS	FED. AID PROJECT		

SHEET NO. 5
OF 20 SHEETS

Contract No. 72667

CURB LINE (S.B.)

Location	Station	Offset	Theoretical Grade Elevations
End S. Appr. Pav't	18+69.00	-33.00	641.51
A	18+79.00	-33.00	641.57
B	18+89.00	-33.00	641.63
Bk. S. ABut	18+99.00	-33.00	641.69

EDGE OF PAVEMENT (S.B.)

Location	Station	Offset	Theoretical Grade Elevations
End S. Appr. Pav't	18+69.00	-23.00	641.71
A	18+79.00	-23.00	641.77
B	18+89.00	-23.00	641.83
Bk. S. ABut	18+99.00	-23.00	641.89

PROFILE GRADE (S.B.)

Location	Station	Offset	Theoretical Grade Elevations
End S. Appr. Pav't	18+69.00	-9.00	641.92
A	18+79.00	-9.00	641.98
B	18+89.00	-9.00	642.04
Bk. S. ABut	18+99.00	-9.00	642.10

CENTERLINE ROADWAY

Location	Station	Offset	Theoretical Grade Elevations
End S. Appr. Pav't	18+69.00	0.00	642.05
A	18+79.00	0.00	642.12
B	18+89.00	0.00	642.18
Bk. S. ABut	18+99.00	0.00	642.23

PROFILE GRADE (N.B.)

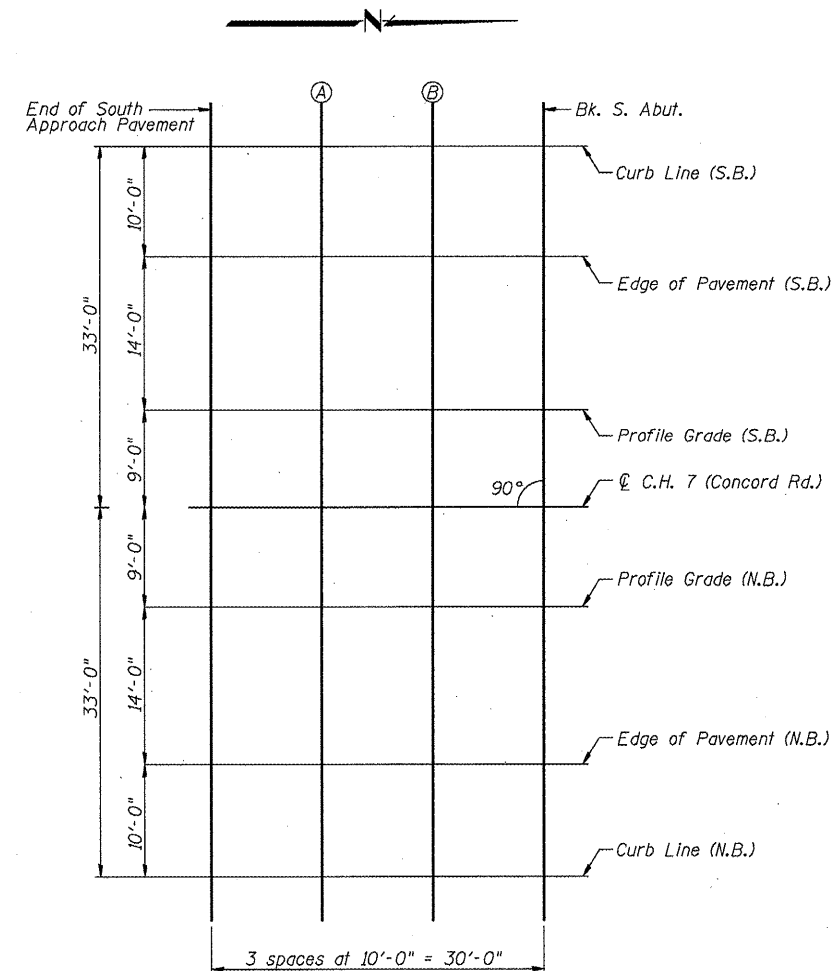
Location	Station	Offset	Theoretical Grade Elevations
End S. Appr. Pav't	18+69.00	9.00	641.92
A	18+79.00	9.00	641.98
B	18+89.00	9.00	642.04
Bk. S. ABut	18+99.00	9.00	642.10

EDGE OF PAVEMENT (N.B.)

Location	Station	Offset	Theoretical Grade Elevations
End S. Appr. Pav't	18+69.00	23.00	641.71
A	18+79.00	23.00	641.77
B	18+89.00	23.00	641.83
Bk. S. ABut	18+99.00	23.00	641.89

CURB LINE (N.B.)

Location	Station	Offset	Theoretical Grade Elevations
End S. Appr. Pav't	18+69.00	33.00	641.51
A	18+79.00	33.00	641.57
B	18+89.00	33.00	641.63
Bk. S. ABut	18+99.00	33.00	641.69



PLAN

Note: Offsets are from C.H. 7 (Concord Rd.)

**TOP OF SOUTH APPROACH
SLAB ELEVATIONS
C.H. 7 (CONCORD RD.) (F.A.S. 579)
OVER U.S. 67/IL 104 (F.A.P. 310)
MORGAN COUNTY
STA. 807+81.68 - SECTION 69-3(3HB)
S.N. 069-0513**