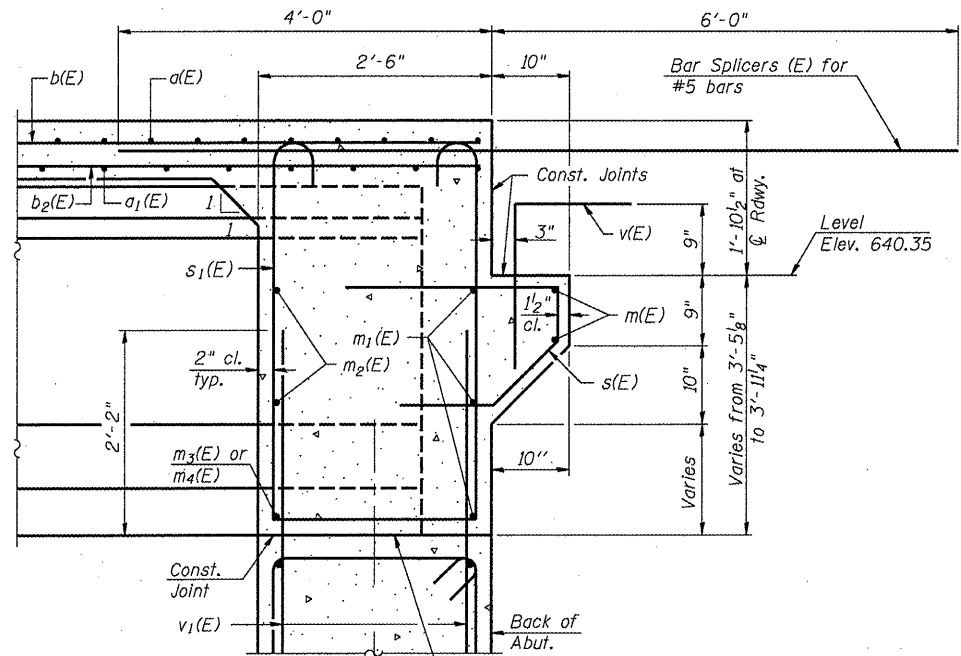


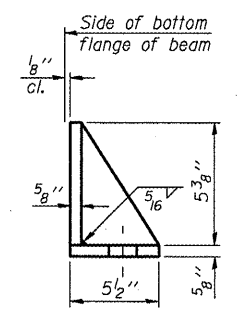
ROUTE NO.	SECTION	COUNTY	TOTAL SHEETS	SHEET NO.	SHEET NO. 8 OF 20 SHEETS
F.A.S. 579	69-3(3HB)	MORGAN	793	331	
FED. ROAD DIST. NO.	ILLINOIS	FED. AID PROJECT			

Contract No. 72667



**SECTION A-A**

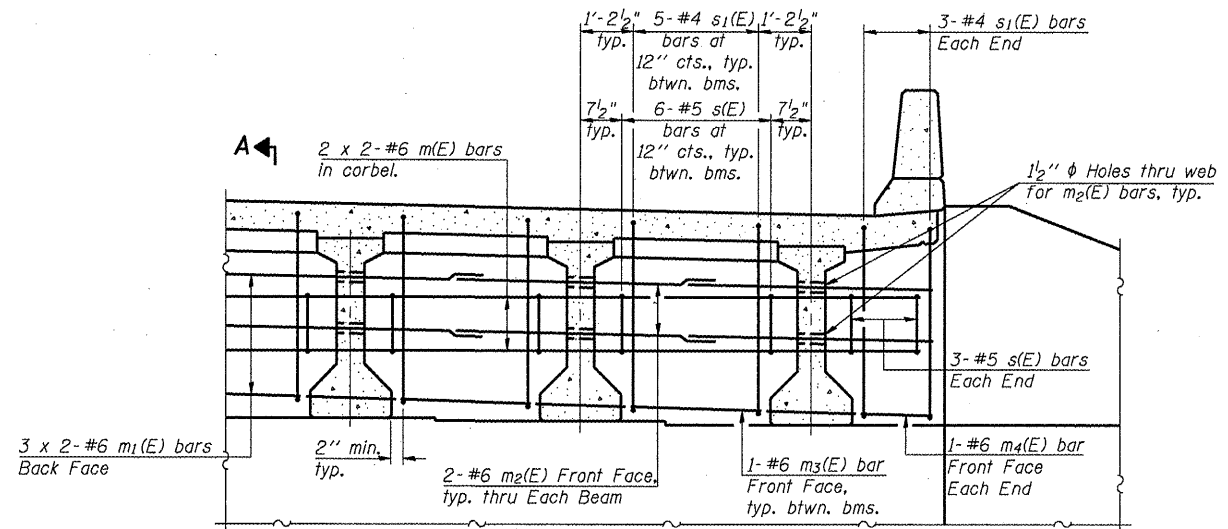
Beam ends shall be set on an initial 1/2" min. grout (2:1 sand and portland cement, very dry mix) to provide full bearing. Any excess grout squeezed out from under the beam shall be removed. Cost included with Concrete Structures.



**SIDE RETAINER**

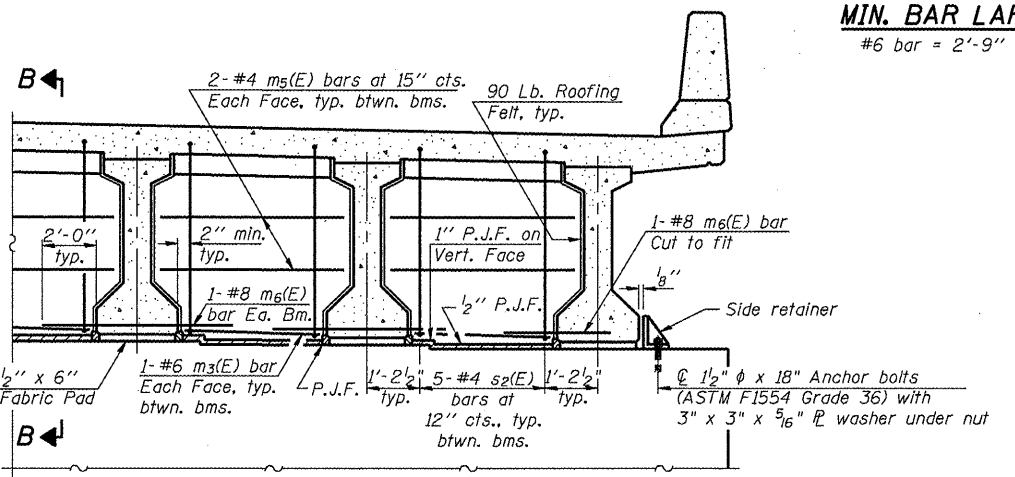
Equivalent rolled angle with stiffeners will be allowed in lieu of welded plates.

1/2" x 18" Anchor Bolts (ASTM F1554 Grade 36) with 3" x 3" x 5/16" P Washer under nut. Holes in cap to be drilled after beams are in place. See Sheet 15 of 20.



**DIAPHRAGM ELEVATION AT ABUTMENT**

**MIN. BAR LAP**  
#6 bar = 2'-9"

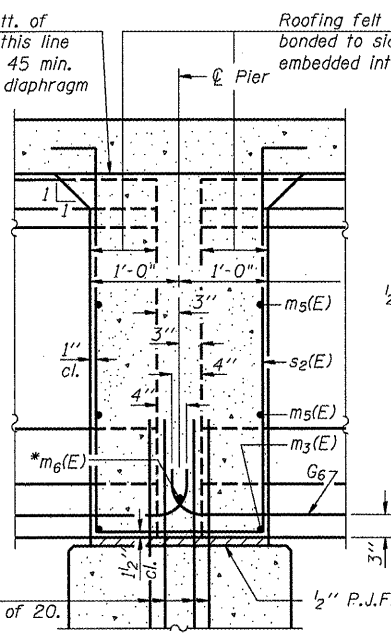


**DIAPHRAGM ELEVATION AT PIER**

**Notes:**  
Reinforcement bars in diaphragm are billed with superstructure on sheet 9 of 20.  
Concrete in diaphragm is included with Concrete Superstructure on sheet 9 of 20.  
For details of bars s(E), s1(E) and s2(E) see sheet 9 of 20. The s(E), s1(E) and s2(E) bars shall be placed parallel to the beams. Spacing for these bars shall be at right angles to the beams. Cost of 90 Lb. roofing felt is included with Concrete Superstructure. The side retainer shall be galvanized after shop fabrication according to AASHTO M 111. Cost of side retainer and anchor bolts shall be included with Concrete Structures.  
Anchor bolts shall be ASTM F1554 all-thread (or an Engineer-approved alternate material) of the grade(s) and diameter(s) specified. ASTM A307 Grade C anchor bolts may be used in lieu of ASTM F1554 Grade 36 (Fy=36ksi). The corresponding specified grade of AASHTO M314 anchor bolts may be used in lieu of ASTM F1554.  
Anchor bolts for side retainers may be cast in place or installed in holes drilled before or after members are in place.  
Drilled and set anchor bolts shall be installed according to Article 521.06 of the Standard Specifications.

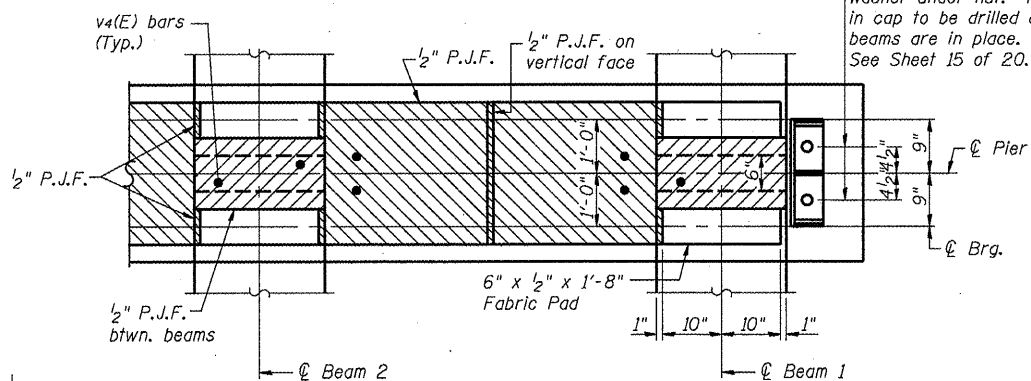
**DIAPHRAGM DETAILS**  
**C.H. 7 (CONCORD RD.) (F.A.S. 579)**  
**OVER U.S. 67/IL 104 (F.A.P. 310)**  
**MORGAN COUNTY**  
**STA. 807+81.68 - SECTION 69-3(3HB)**  
**S.N. 069-0513**

Pour diaphragm flush with bott. of slab. Concrete in slab above this line shall be placed not less than 45 min. nor more than 90 min. after diaphragm has been poured.



**SECTION B-B**

\* Tightly fasten the #8 bars together with No. 9 wire ties.



**PARTIAL PLAN AT PIER CAP**  
(Showing bearing pad and P.J.F. details)