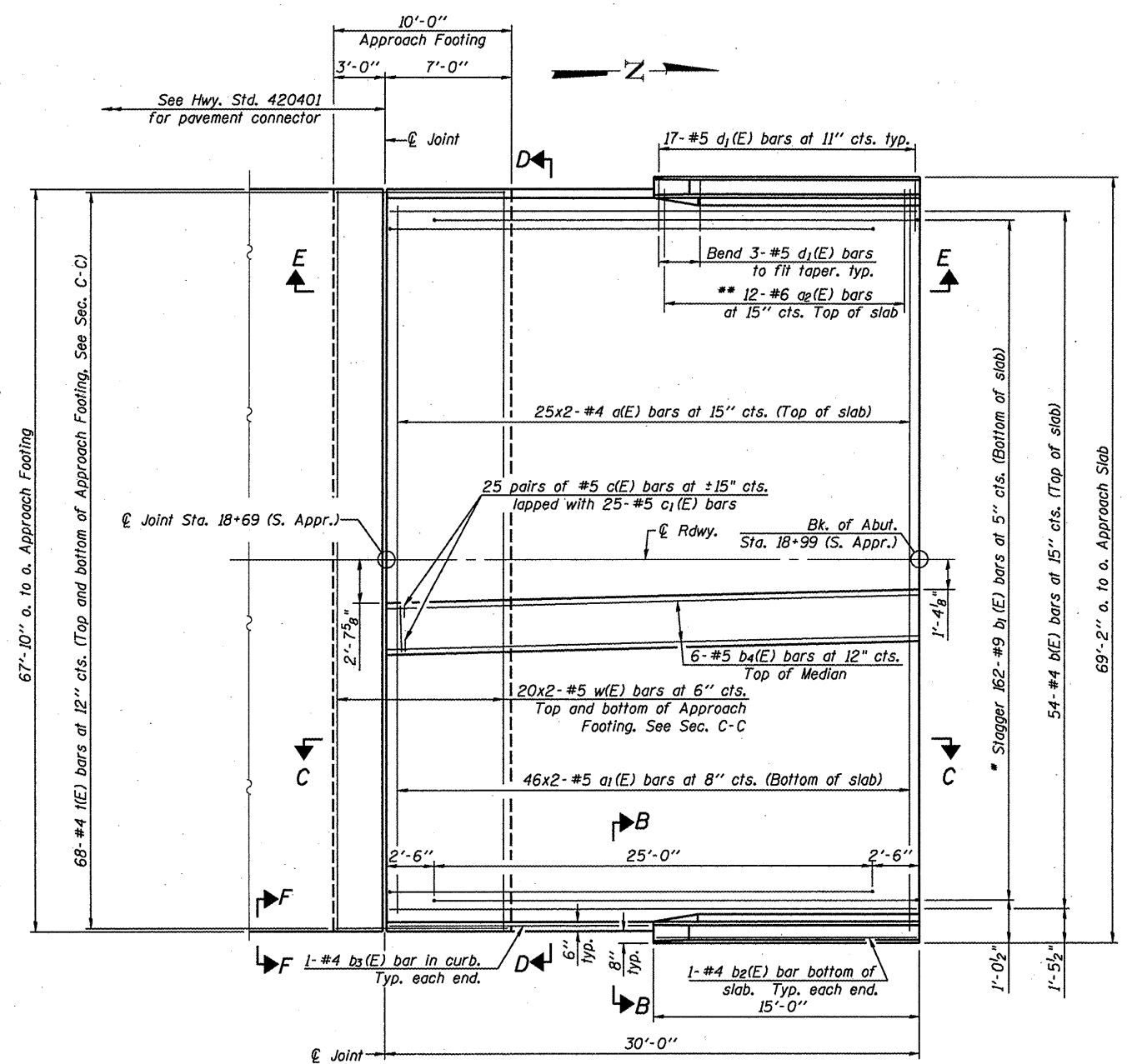
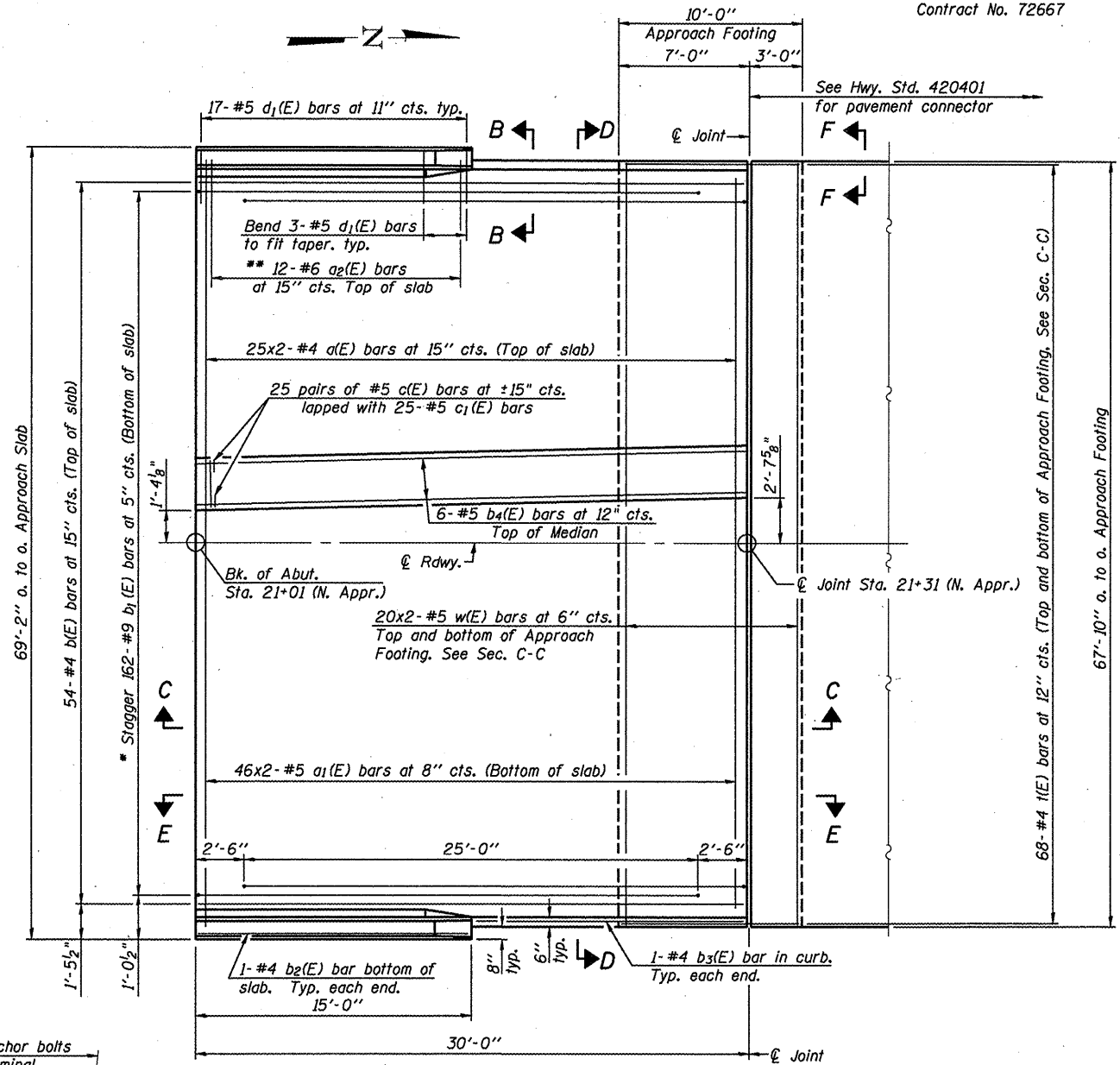


ROUTE NO.	SECTION	COUNTY	TOTAL SHEETS	SHEET NO.
F.A.S. 579	69-3(3HB)	MORGAN	793	333
FED. ROAD DIST. NO.	ILLINOIS	FED. AID PROJECT	Contract No. 72667	

SHEET NO. 10
OF 20 SHEETS



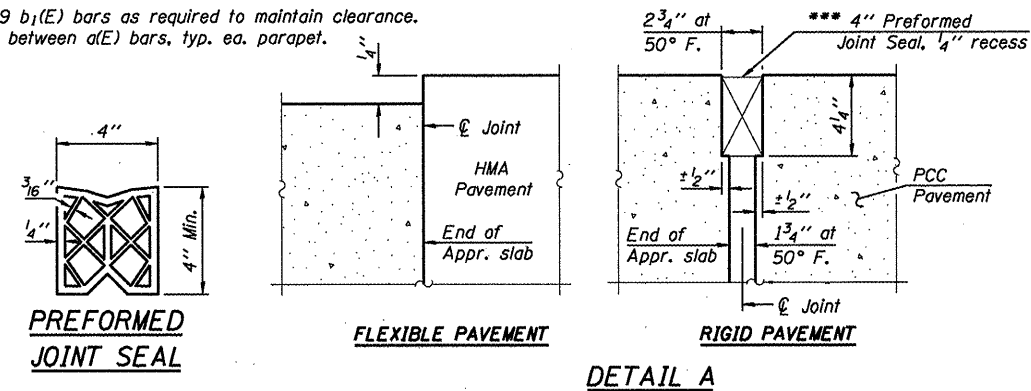
PLAN
(South Abutment)



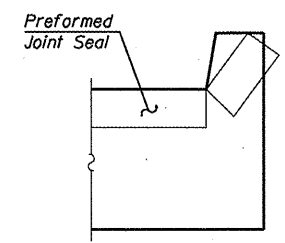
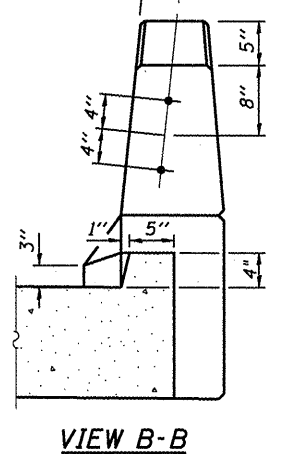
PLAN
(North Abutment)

MIN. BAR LAP
#4 Bar = 1'-4"
#5 Bar = 1'-8"

- * Tilt #9 b1(E) bars as required to maintain clearance.
- ** Space between a(E) bars, typ. ea. parapet.



1" ϕ Anchor bolts
Type 5 terminal
connections only.



VIEW F-F
Angle Preformed Joint Seal at 45°
at curbs when req'd for drainage.

Notes:
See sheet 11 of 20 for Sections C-C & D-D and View E-E.
a(E) and a1(E) bar spacings measured along ϕ Rdwy.

*** Cost included with Concrete Superstructure.

(Sheet 1 of 2)
APPROACH SLAB DETAILS
C.H. 7 (CONCORD RD.) (F.A.S. 579)
OVER U.S. 67/IL 104 (F.A.P. 310)
MORGAN COUNTY
STA. 807+81.68 - SECTION 69-3(3HB)
S.N. 069-0513