

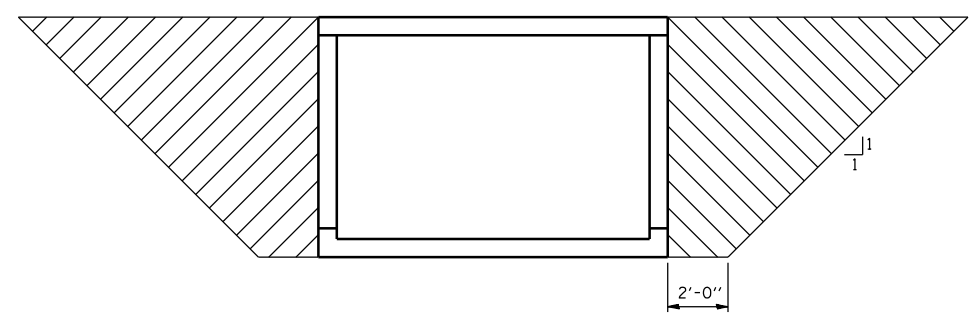
F.A.P. RTE.	SECTION	COUNTY	TOTAL SHEETS	SHEET NO.
310	69-3(3HB)	MORGAN	793	350
STA.		TO STA.		
FED. ROAD DIST. NO.		ILLINOIS	FED. AID PROJECT	

9:40:34 AM

Mar-30-2011 09:40:34 AM

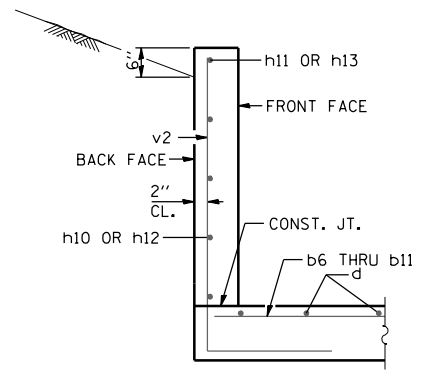
MIN. BAR LAP

*6 = 2'-0"

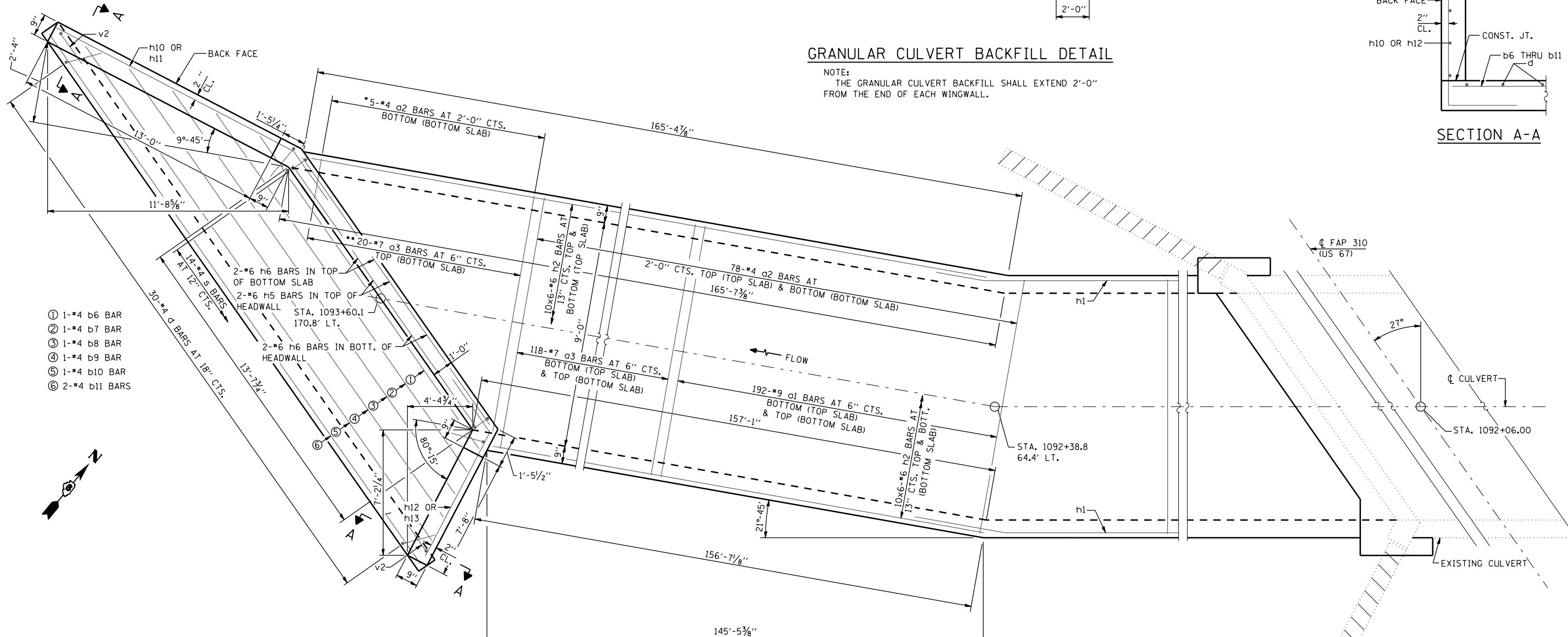


GRANULAR CULVERT BACKFILL DETAIL

NOTE:
THE GRANULAR CULVERT BACKFILL SHALL EXTEND 2'-0" FROM THE END OF EACH WINGWALL.



SECTION A-A



PLAN

NOTE:
HATCHED AREA INDICATES CONCRETE REMOVAL.
COST INCLUDED WITH CONCRETE REMOVAL.

NOTE:
IF ROCK EXCAVATION IS REQUIRED, IT SHOULD EXTEND 6" BELOW THE BOTTOM OF THE CULVERT WITH 6" OF POROUS GRANULAR EMBANKMENT BELOW THE BOX. QUANTITIES FOR ROCK EXCAVATION AND POROUS GRANULAR EMBANKMENT ARE INCLUDED IN THE PLANS SHOULD THIS BE REQUIRED.

- ORDER q2 FULL LENGTH, CUT TO FIT SKEW AND USE REMAINDER OF BARS FROM BOTTOM SLAB IN TOP OF TOP SLAB.
- ORDER q3 FULL LENGTH, CUT TO FIT SKEW AND USE REMAINDER OF BARS FROM BOTTOM SLAB IN BOTTOM OF TOP SLAB. ALTERNATE HOOK OF q3 BARS FOR PLACEMENT.

REVISIONS	
NAME	DATE

ILLINOIS DEPARTMENT OF TRANSPORTATION
BOX CULVERT EXTENSIONS-2
STATION 1092+06.00
FAP 310 (US 67/IL 104)
 DRAWN BY RJP
 CHECKED BY ADL
 DATE 5/09

\$FILE\$