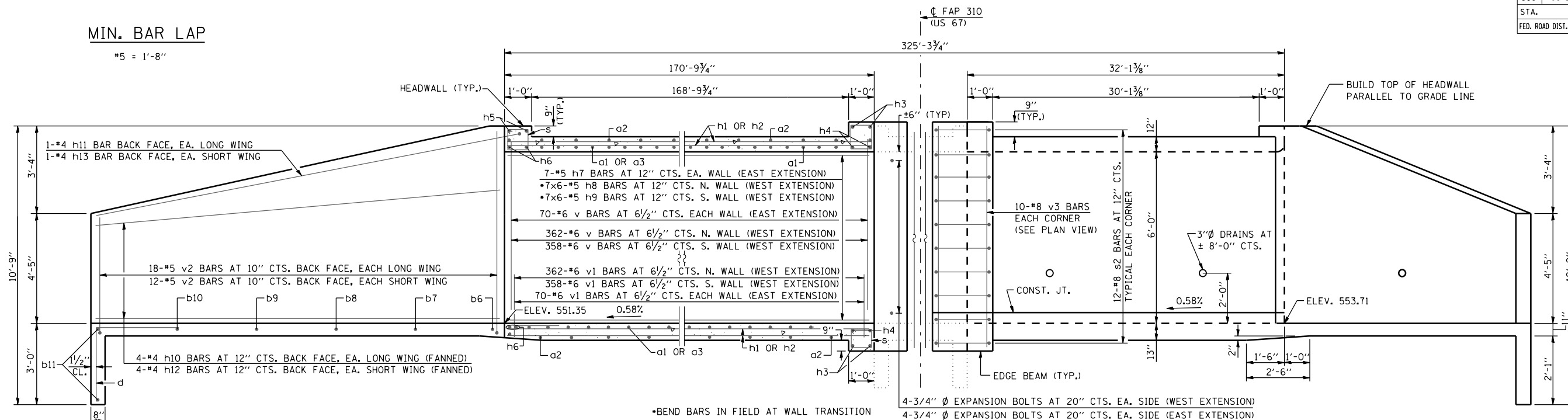


F.A.P. RTE.	SECTION	COUNTY	TOTAL SHEETS	SHEET NO.
310	69-3(3HB)	MORGAN	793	351
STA.		TO STA.		
FED. ROAD DIST. NO.		ILLINOIS FED. AID PROJECT		

MIN. BAR LAP

*5 = 1'-8"

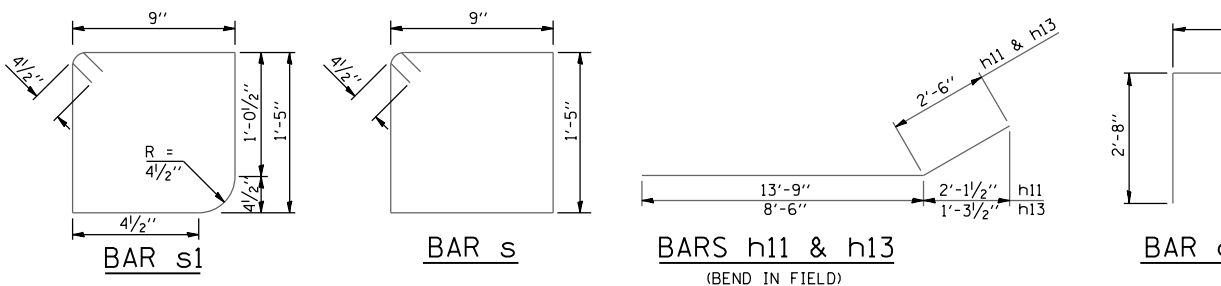


BILL OF MATERIAL

BAR	NO.	SIZE	LENGTH	SHAPE
a1	658	#9	12'-9"	□
a2	231	#4	10'-3"	□
a3	256	#7	11'-11"	□
b	1	#4	12'-0"	□
b1	1	#4	14'-0"	□
b2	1	#4	17'-4"	□
b3	1	#4	20'-9"	□
b4	1	#4	24'-1"	□
b5	2	#4	26'-8"	□
b6	1	#4	15'-6"	□
b7	1	#4	17'-7"	□
b8	1	#4	21'-0"	□
b9	1	#4	24'-3"	□
b10	1	#4	27'-8"	□
b11	2	#4	30'-2"	□
d	48	#4	5'-4"	□
h	40	#6	36'-9"	□
h1	40	#6	36'-2"	□
h2	240	#6	29'-9"	□
h3	10	#6	10'-0"	□
h4	10	#6	11'-2"	□
h5	2	#6	13'-5"	□
h6	4	#6	15'-5"	□
h7	14	#5	36'-9"	□
h8	42	#5	29'-5"	□
h9	42	#5	28'-0"	□
h10	8	#4	13'-9"	□
h11	2	#4	16'-3"	□
h12	8	#4	8'-6"	□
h13	2	#4	11'-0"	□
s	58	#4	5'-1"	□
s1	14	#4	4'-11"	□
s2	40	#8	6'-5"	□
v	860	#6	6'-3"	□
v1	860	#6	3'-3"	□
v2	30	#5	17'-7"	□
v3	40	#8	7'-10"	□
REINFORCEMENT BARS		POUND	70,070	

HALF LONG. SECTION

(DIMENSIONS AT RT. L'S TO C ROADWAY)



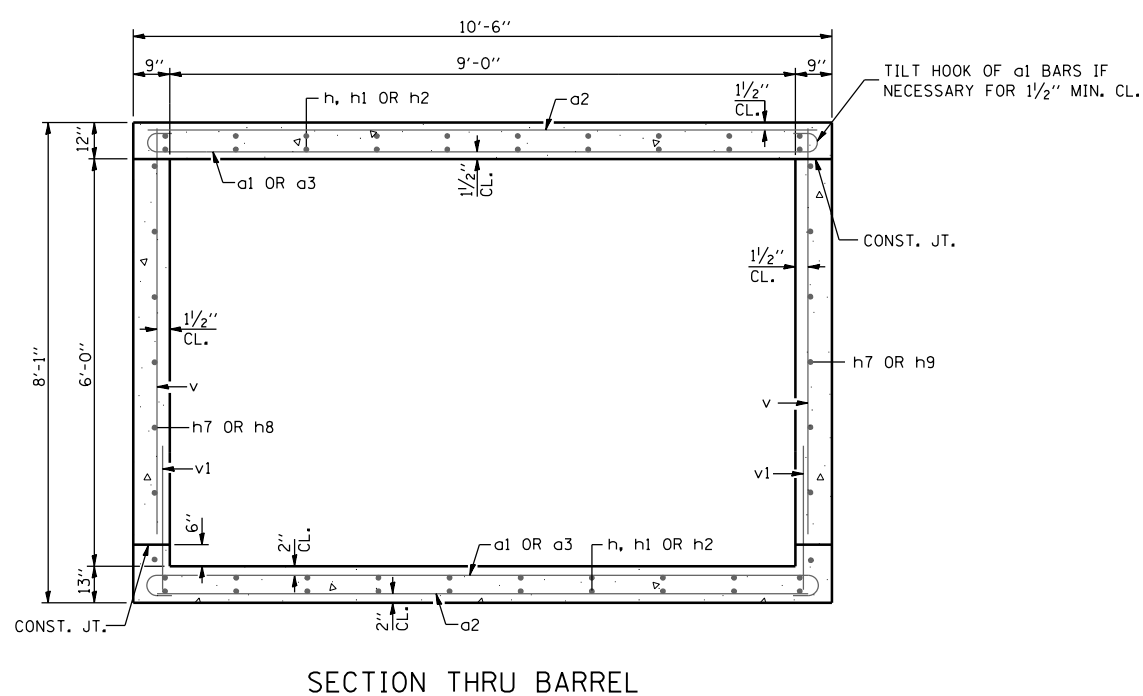
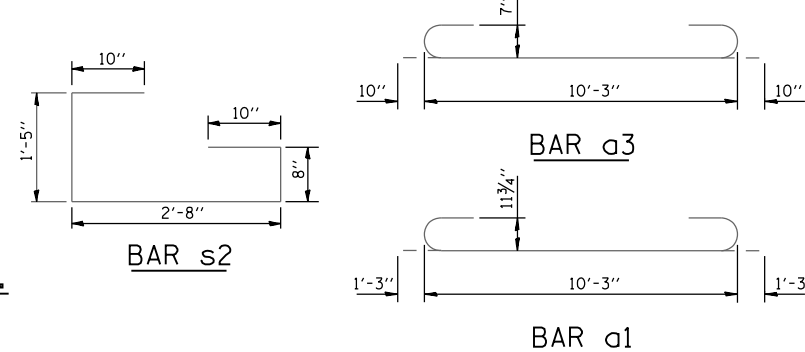
HALF ELEVATION

DESIGN STRESSES

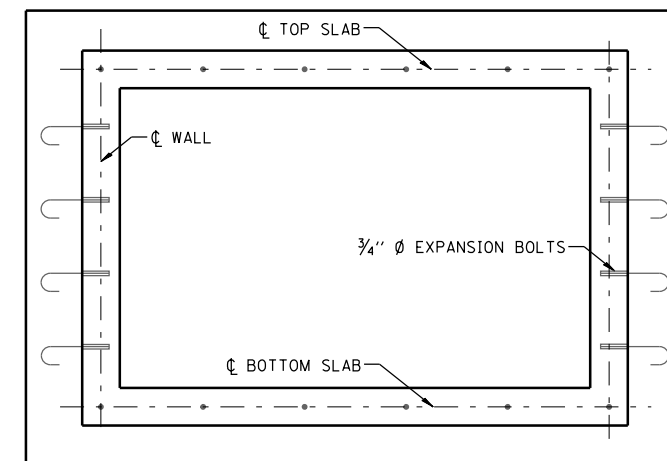
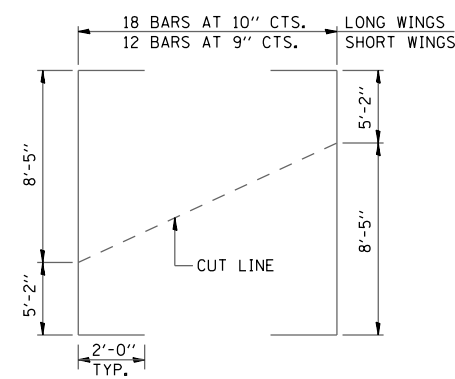
(NEW CONSTRUCTION)
 f_y = 60,000 PSI
 f'_c = 3,500 PSI

LOADING HS 20-44 & ALT.

(NEW CONSTRUCTION)



FIELD CUTTING DIAGRAM BAR v2



NOTES:

1. EXPOSED EDGES SHALL BE BEVELED 3/4".
2. FOR BACKFILLING AND EMBANKMENT, SEE STANDARD SPECIFICATIONS.
3. REINFORCEMENT BARS SHALL CONFORM TO THE REQUIREMENTS OF ASTM A 706 GR. 60 (IL MODIFIED), SEE SPECIAL PROVISIONS.
4. EXPANSION BOLTS SHALL BE 3/4" Ø HOOKED BOLTS. HOOKED BOLTS SHALL EXTEND A MINIMUM OF 9" INTO NEW CONCRETE.
5. BARS INDICATED THUS 7x6-#5 ETC. INDICATES 7 LINES OF BARS WITH 6 LENGTHS PER LINE.

REVISIONS	
NAME	DATE

ILLINOIS DEPARTMENT OF TRANSPORTATION
BOX CULVERT DETAILS
 STATION 1092+06.00
 FAP 310 (US 67/IL 104)

DATE 5/09
 DRAWN BY RJP
 CHECKED BY ADL