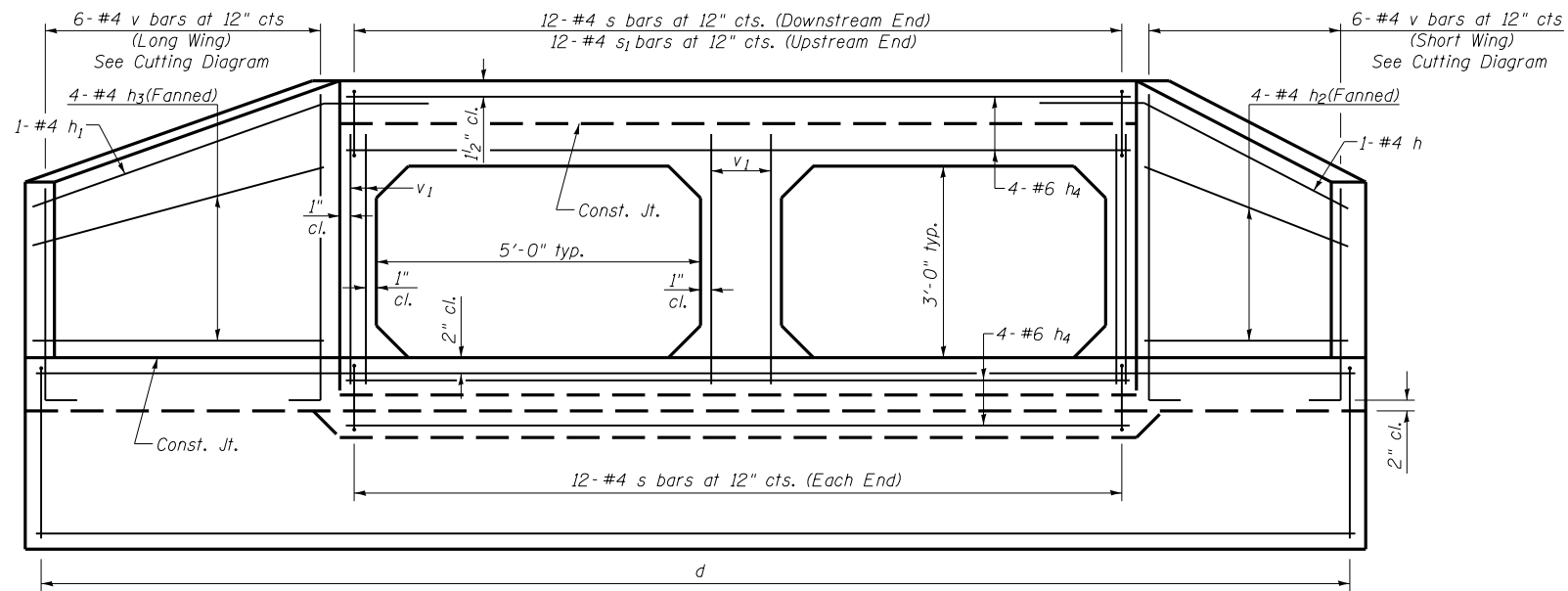


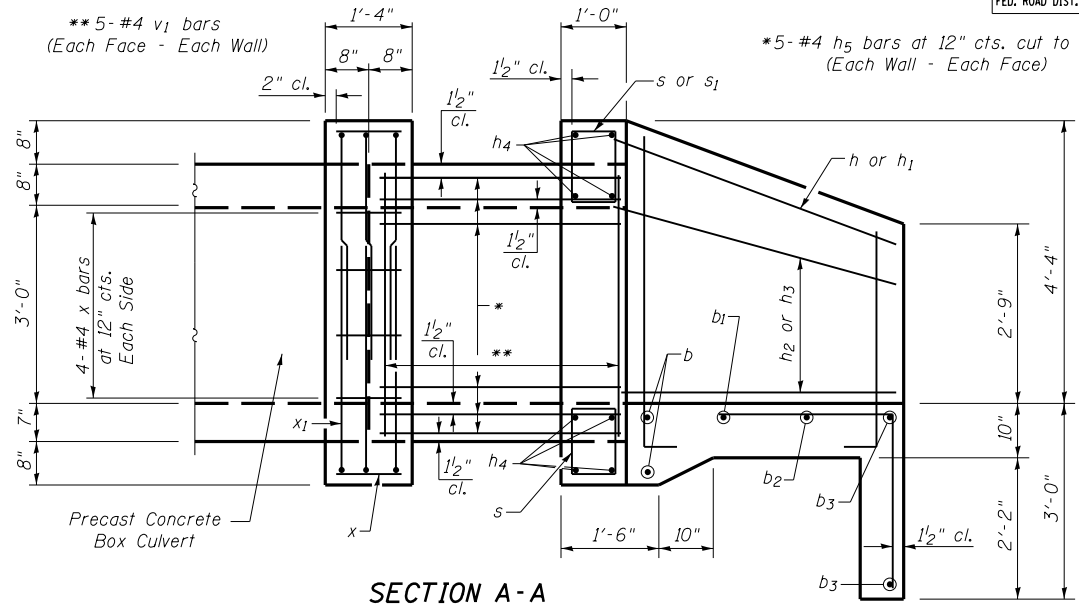
F.A.P. RTE.	SECTION	COUNTY	TOTAL SHEETS	SHEET NO.
310	69-3(3HB)	MORGAN	793	355
STA.		TO STA.		
FED. ROAD DIST. NO.		ILLINOIS FED. AID PROJECT		

9:40:41 AM

Mar-30-2011 09:40:41AM



**END ELEVATION**



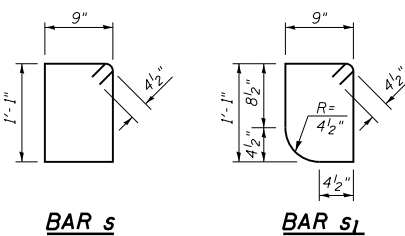
**SECTION A-A**

**NOTES:**

- Bill of Material for 2 end sections.
- Bar dimensions are out to out.
- Not to scale or proper orientation.
- Exposed edges shall be beveled 3/4".
- Reinforcement bars shall conform to the requirements of ASTM A706 Gr 60. See Special Provisions.
- Headwall at 10° skew to culvert centerline.
- Minimum bar laps:  
#4 bar = 1'-9"

**BILL OF MATERIAL**

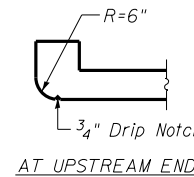
Bar	No.	Size	Length	Shape	
a	40	#6	11'-11"		
b	4	#4	13'-1"		
b1	2	#4	15'-9"		
b2	2	#4	18'-6"		
b3	4	#4	20'-8"		
d	30	#4	5'-4"		
h	2	#4	8'-6"		
h1	2	#4	9'-7"		
h2	8	#4	6'-2"		
h3	8	#4	7'-4"		
h4	16	#6	11'-3"		
h5	60	#4	3'-8"		
s	36	#4	4'-5"		
s1	12	#4	4'-3"		
v	24	#4	12'-1"		
v1	60	#4	3'-11"		
x	72	#4	1'-0"		
x1	12	#4	16'-9"		
Reinforcement Bars				Pound	1,930



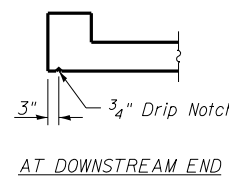
**BAR s**

**BAR s1**

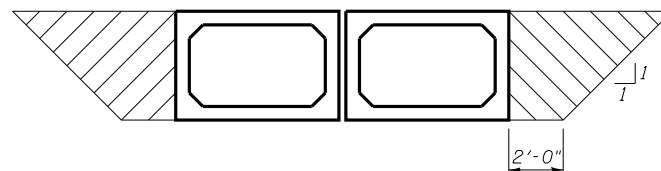
**BAR x1**



**AT UPSTREAM END**

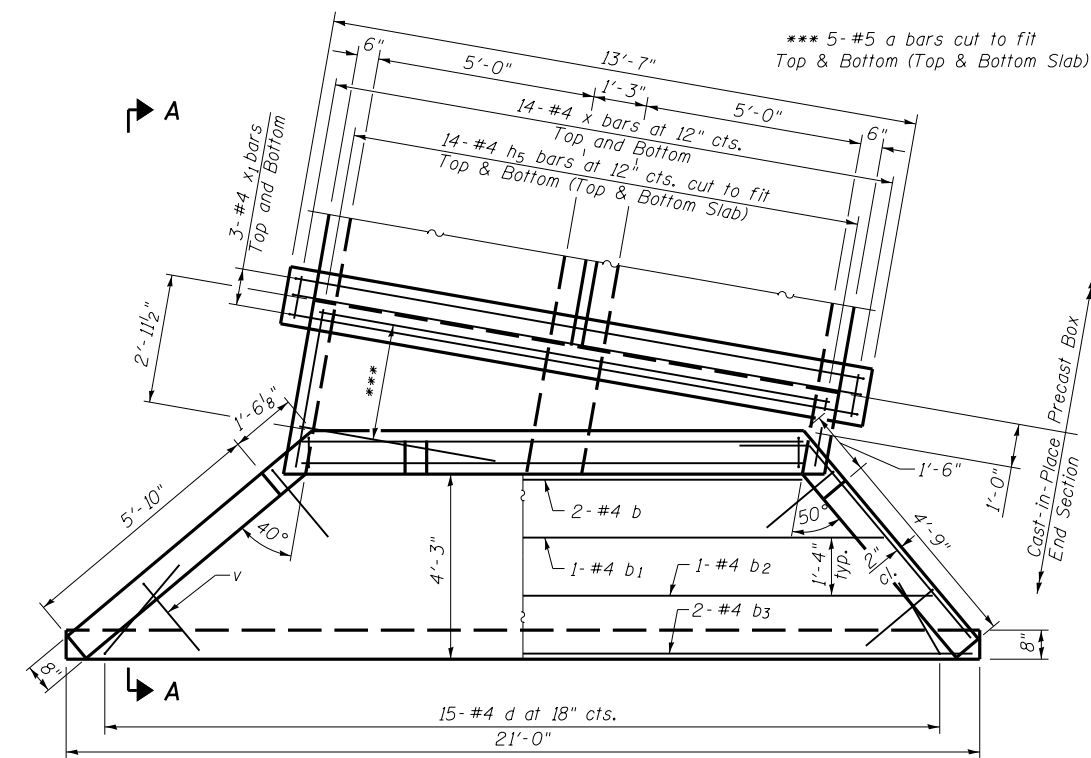


**SECTION THRU HEADWALL**

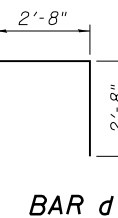


**GRANULAR CULVERT BACKFILL DETAIL**

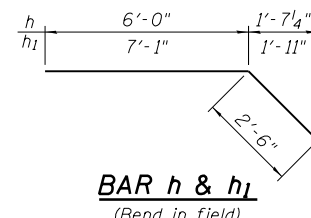
Note:  
The Granular Culvert Backfill shall extend 2'-0" from the end of each wingwall.



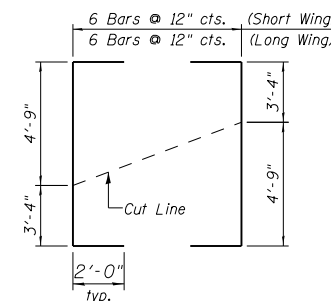
**PLAN**



**BAR d**



**BAR h & h1**  
(Bend in field)



**FIELD CUTTING DIAGRAM**  
**BAR v**

REVISIONS	
NAME	DATE

ILLINOIS DEPARTMENT OF TRANSPORTATION  
CULVERT DETAILS  
STATION 444+96.00  
FAS 1611 (COOPER STREET)

DRAWN BY  
CHECKED BY  
DATE

\$ FILE \$