

F.A.P. RTE.	SECTION	COUNTY	TOTAL SHEETS	SHEET NO.
310	69-3(3HB)	MORGAN	793	360
STA.		TO STA.		
FED. ROAD DIST. NO.		ILLINOIS FED. AID PROJECT		

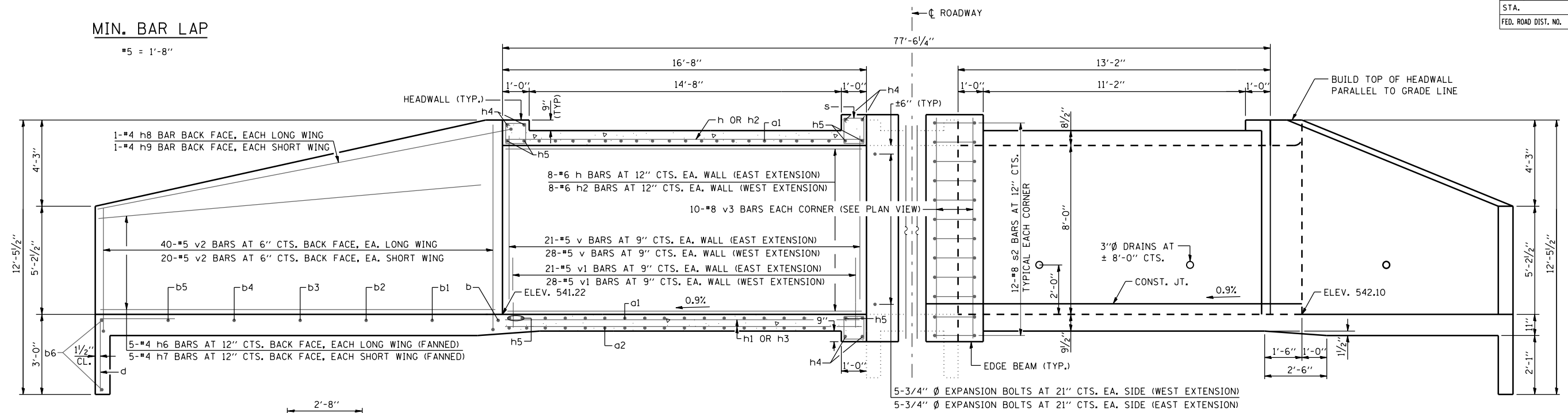
9:40:54 AM

Mar-30-2011 09:40:54AM

\$FILE\$

MIN. BAR LAP

#5 = 1'-8"



HALF LONG. SECTION

(DIMENSIONS AT RT. L'S TO CL ROADWAY)

HALF ELEVATION

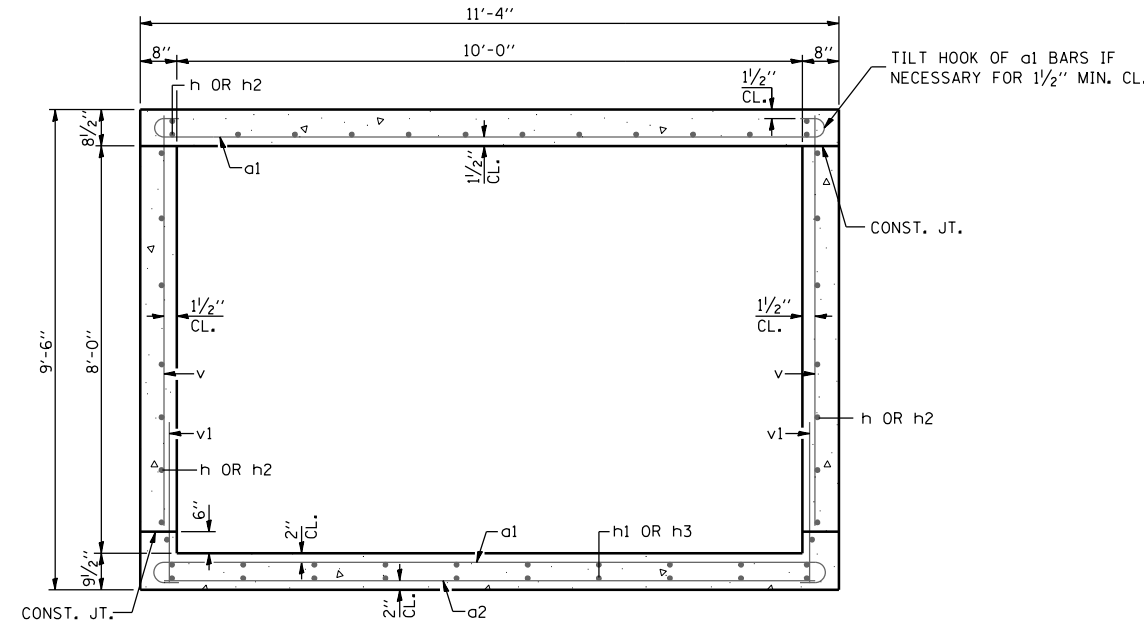
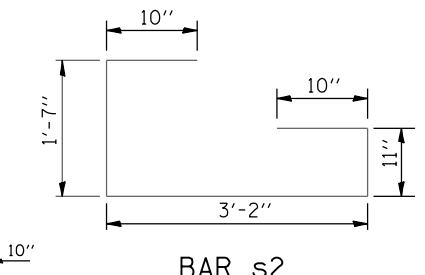
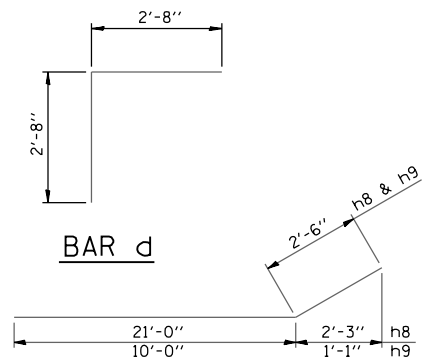
DESIGN STRESSES

(NEW CONSTRUCTION)
 f_y = 60,000 PSI
 f'_c = 3,500 PSI

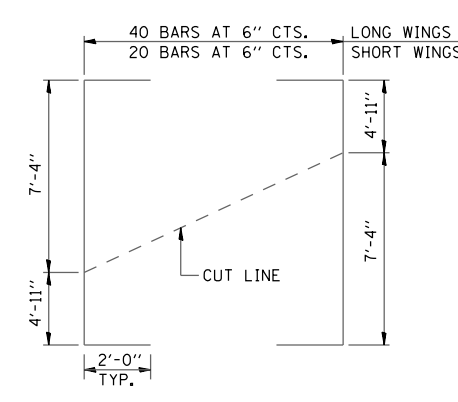
LOADING HS 20-44 & ALT.
 (NEW CONSTRUCTION)

BILL OF MATERIAL

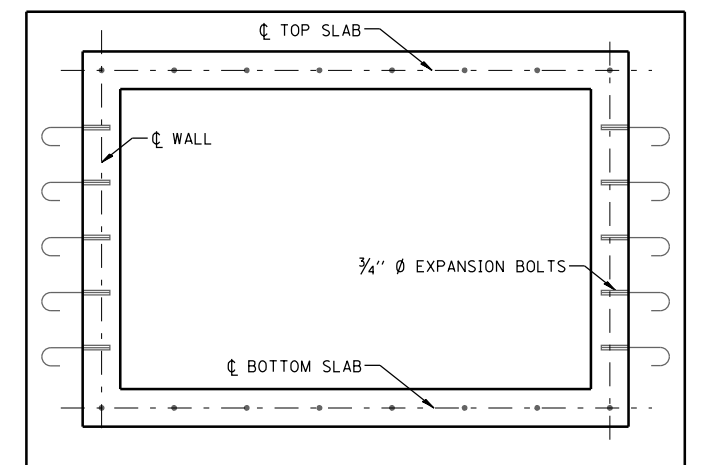
BAR	NO.	SIZE	LENGTH	SHAPE
a1	136	#7	12'-9"	□
a2	19	#4	10'-3"	□
b	2	#4	15'-0"	□
b1	2	#4	18'-7"	□
b2	2	#4	22'-4"	□
b3	2	#4	26'-2"	□
b4	2	#4	30'-0"	□
b5	2	#4	33'-9"	□
b6	4	#4	38'-8"	□
d	50	#4	5'-4"	□
h	30	#6	16'-5"	□
h1	20	#5	16'-5"	□
h2	30	#6	20'-10"	□
h3	20	#5	20'-10"	□
h4	12	#6	12'-10"	□
h5	16	#6	13'-8"	□
h6	10	#4	21'-0"	□
h7	10	#4	10'-0"	□
h8	2	#4	23'-6"	□
h9	2	#4	12'-6"	□
s	70	#4	4'-7"	□
s1	14	#4	4'-5"	□
s2	48	#8	7'-4"	□
v	98	#5	8'-0"	□
v1	98	#5	3'-0"	□
v2	60	#5	16'-3"	□
v3	40	#8	10'-8"	□
REINFORCEMENT BARS			POUND	11,900



SECTION THRU BARREL



FIELD CUTTING DIAGRAM BAR v2



EXPANSION BOLT LOCATION DETAIL

NOTES:

- EXPOSED EDGES SHALL BE BEVELED 3/4".
- FOR BACKFILLING AND EMBANKMENT, SEE STANDARD SPECIFICATIONS.
- REINFORCEMENT BARS SHALL CONFORM TO THE REQUIREMENTS OF ASTM A 706 GR. 60 (IL MODIFIED). SEE SPECIAL PROVISIONS.
- EXPANSION BOLTS SHALL BE 3/4" Ø HOOKED BOLTS. HOOKED BOLTS SHALL EXTEND A MINIMUM OF 9" INTO NEW CONCRETE.

REVISIONS	
NAME	DATE

ILLINOIS DEPARTMENT OF TRANSPORTATION
BOX CULVERT DETAILS
 STATION 291+09.19
 TR 18 (HART'S GRAVEL ROAD)

DATE 5/09

DRAWN BY RJP
 CHECKED BY ADL