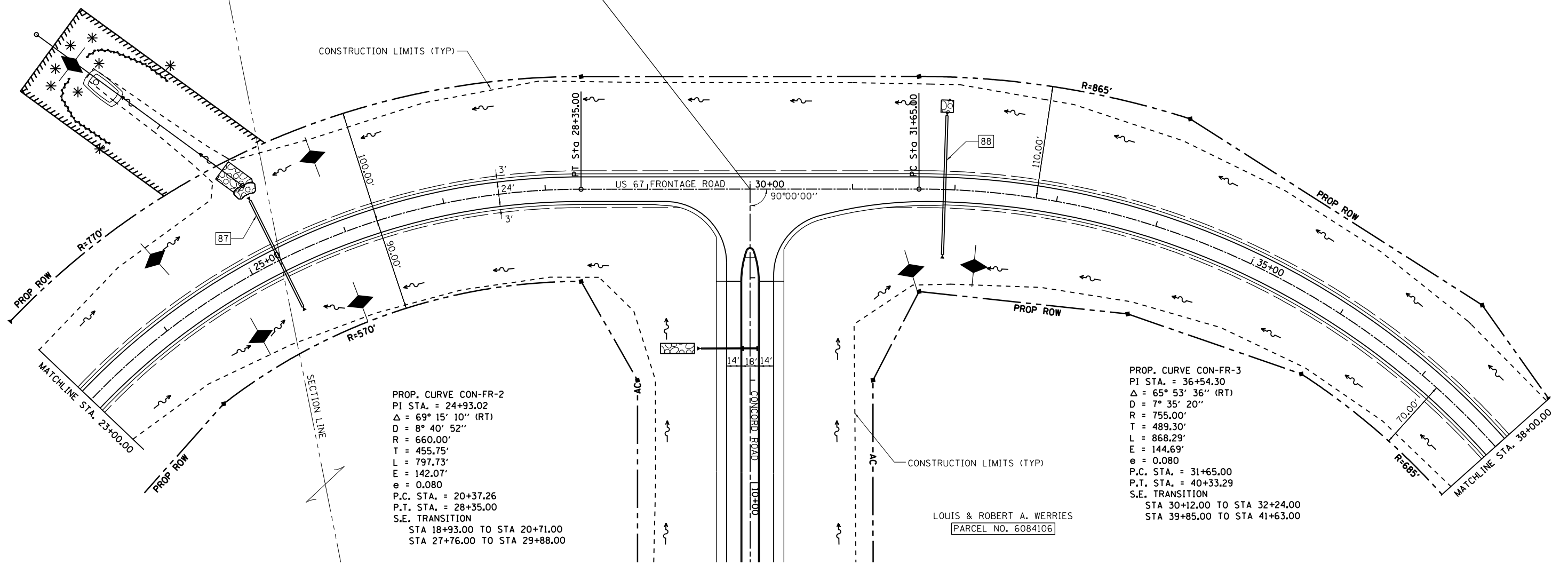


PERMANENT EASEMENT
REQUIRED FOR REGRADING
OF DRAINAGE SWALE

STA. 30+00.00 (US 67 FRONTAGE RD) =
STA. 7+13.45 (CONCORD RD)

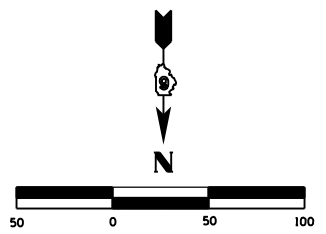
CONSTRUCTION LIMITS (TYP)



PROP. CURVE CON-FR-2
 PI STA. = 24+93.02
 Δ = 69° 15' 10" (RT)
 D = 8° 40' 52"
 R = 660.00'
 T = 455.75'
 L = 797.73'
 E = 142.07'
 e = 0.080
 P.C. STA. = 20+37.26
 P.T. STA. = 28+35.00
 S.E. TRANSITION
 STA 18+93.00 TO STA 20+71.00
 STA 27+76.00 TO STA 29+88.00

PROP. CURVE CON-FR-3
 PI STA. = 36+54.30
 Δ = 65° 53' 36" (RT)
 D = 7° 35' 20"
 R = 755.00'
 T = 489.30'
 L = 868.29'
 E = 144.69'
 e = 0.080
 P.C. STA. = 31+65.00
 P.T. STA. = 40+33.29
 S.E. TRANSITION
 STA 30+12.00 TO STA 32+24.00
 STA 39+85.00 TO STA 41+63.00

LOUIS & ROBERT A. WERRIES
 [PARCEL NO. 6084106]



FILE NAME =	USER NAME = sparksgw	DESIGNED -	REVISED -
c:\pwork\pwork\sparksgw\0264875\EC...	sideroads15-27.dgn	DRAWN -	REVISED -
	PLOT SCALE = 100.0000' / in.	CHECKED -	REVISED -
	PLOT DATE = Mar-30-2011 09:44:50AM	DATE -	REVISED -

STATE OF ILLINOIS
 DEPARTMENT OF TRANSPORTATION

STORM WATER POLLUTION
 PREVENTION PLAN

SCALE: SHEET NO. OF SHEETS STA. TO STA.

F.A.P. RTE.	SECTION	COUNTY	TOTAL SHEETS	SHEET NO.
310	69-3	MORGAN	793	410
CONTRACT NO. 72667				
FED. ROAD DIST. NO. ILLINOIS FED. AID PROJECT				