

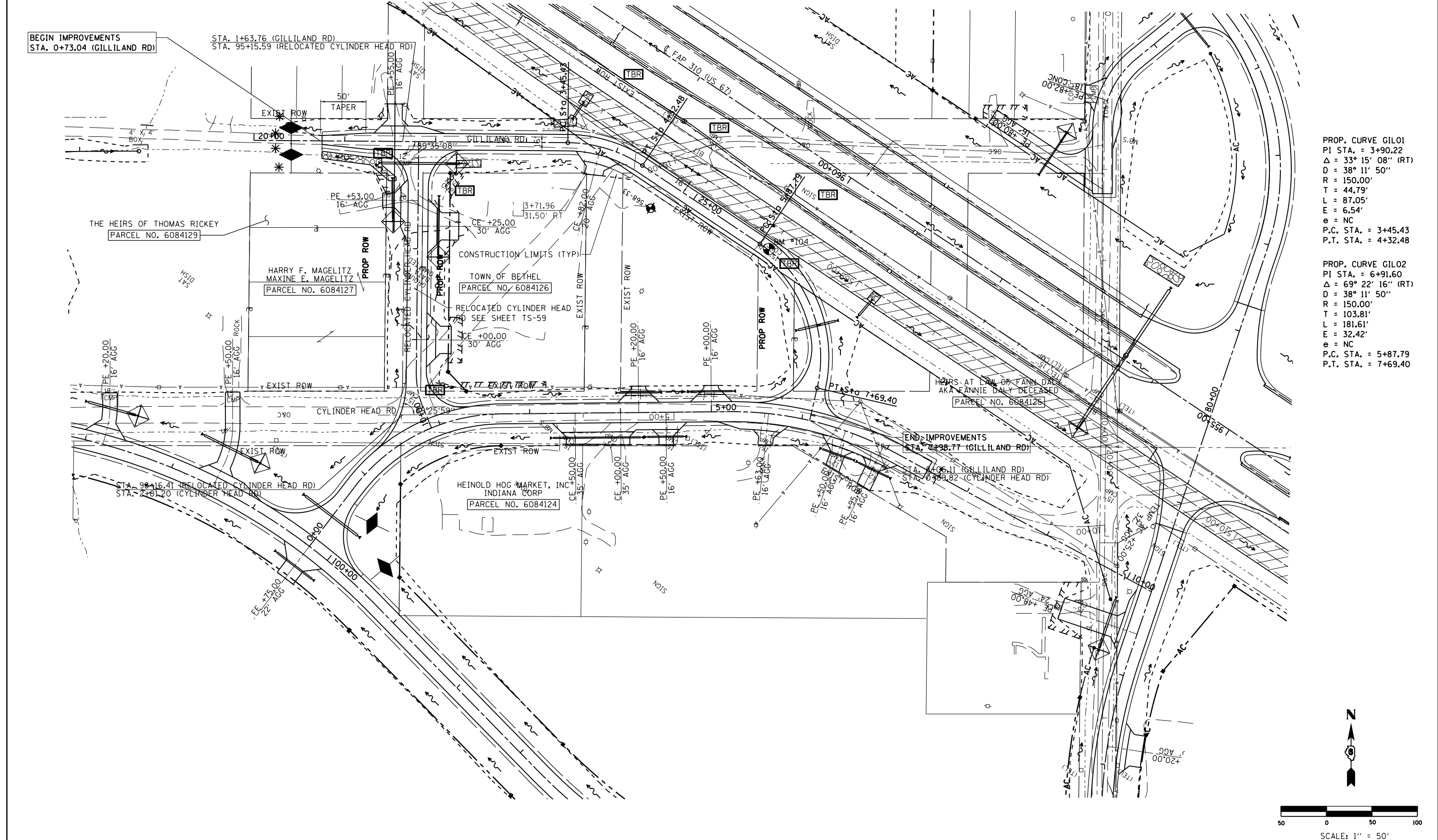
BEGIN IMPROVEMENTS
STA. 0+73.04 (GILLILAND RD)

STA. 1+63.76 (GILLILAND RD)
STA. 95+15.59 (RELOCATED CYLINDER HEAD RD)

END IMPROVEMENTS
STA. 7+98.77 (GILLILAND RD)

PROP. CURVE GIL01
PI STA. = 3+90.22
 $\Delta = 33^\circ 15' 08''$ (RT)
D = 38' 11" 50"
R = 150.00'
T = 44.79'
L = 87.05'
E = 6.54'
e = NC
P.C. STA. = 3+45.43
P.T. STA. = 4+32.48

PROP. CURVE GIL02
PI STA. = 6+91.60
 $\Delta = 69^\circ 22' 16''$ (RT)
D = 38' 11" 50"
R = 150.00'
T = 103.81'
L = 181.61'
E = 32.42'
e = NC
P.C. STA. = 5+87.79
P.T. STA. = 7+69.40



FILE NAME =	USER NAME = Sparksgw	DESIGNED -	REVISED -
c:\pwwork\pwwork\sparksgw\10264875\EC\sideroads1-14.dgn		DRAWN -	REVISED -
PLOT SCALE = 100.0000' / in.		CHECKED -	REVISED -
PLOT DATE = Mar-30-2011 09:45:05AM		DATE -	REVISED -

**STATE OF ILLINOIS
DEPARTMENT OF TRANSPORTATION**

**STORM WATER POLLUTION
PREVENTION PLAN**

SCALE: SHEET NO. OF SHEETS STA. TO STA.

F.A.P. RTE.	SECTION	COUNTY	TOTAL SHEETS	SHEET NO.
310	69-3	MORGAN	793	423
CONTRACT NO. 72667				
FED. ROAD DIST. NO. ILLINOIS FED. AID PROJECT				