

9:45:19 AM

Mar-30-2011 09:45:19AM

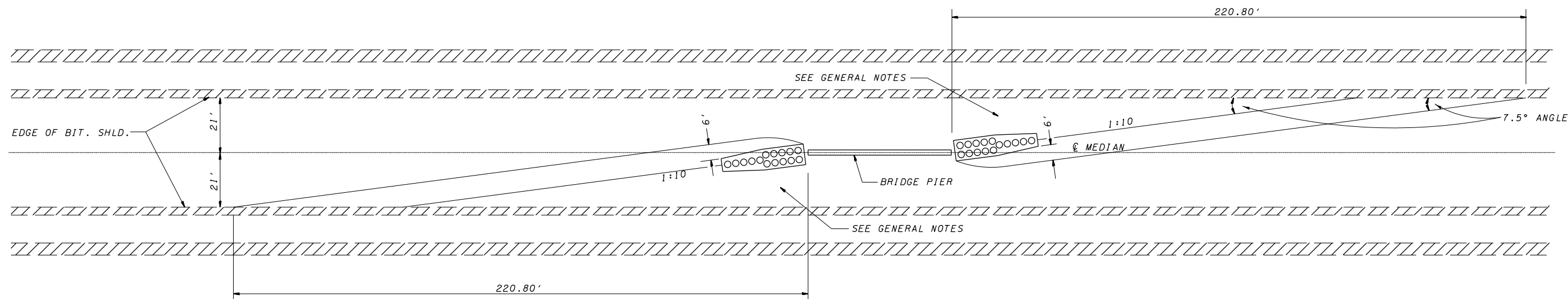
\$FILE\$

CONTRACT NO. 72667

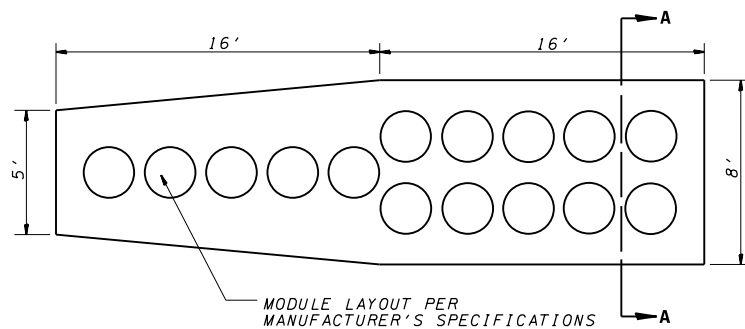
F.A.P. RTE.	SECTION	COUNTY	TOTAL SHEETS	SHEET NO.
310	69-3(3HB)	MORGAN	793	430
STA.		TO STA.		
FED. ROAD DIST. NO.	ILLINOIS	FED. AID PROJECT		

GENERAL NOTES

1. THE 1:10 SLOPE CONTROLS NOSE OF ATTENUATOR BASE ELEVATION.
2. ATTENUATOR BASE GRADE PARALLELS EDGE OF PAVEMENT GRADE.
3. SLOPE ADJACENT TO ATTENUATOR BASE SHALL BE 1:10 OR FLATTER.
4. ATTENUATOR BASE THICKNESS SHALL BE ACCORDING TO THE MANUFACTURER'S SPECIFICATIONS (6" PCC MIN).



INERTIAL BARRIER LAYOUT AND GRADING PLAN



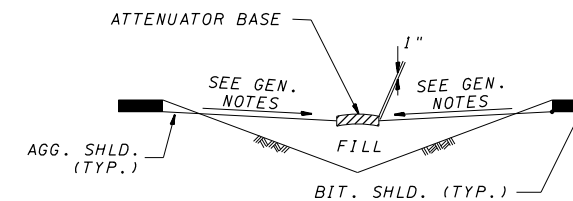
INERTIAL BARRIER MODULE ARRAY AND ATTENUATOR BASE PLAN

DIMENSIONS OF ATTENUATOR BASE SHALL BE MODIFIED IN ACCORDANCE WITH THE MANUFACTURER'S SPECIFICATIONS AND AS DIRECTED BY THE ENGINEER.

PLAN DIMENSIONS AND QUANTITIES ARE ESTIMATES ONLY.

QUANTITIES

ITEM	UNIT	TOTAL
IMPACT ATTENUATOR (NON-REDIRECTIVE), TEST LEVEL 3	EACH	2



SECTION A - A

REVISIONS	
NAME	DATE

ILLINOIS DEPARTMENT OF TRANSPORTATION
 MISCELLANEOUS DETAILS
 IMPACT ATTENUATOR
 FAP 310 (US 67/IL 104)

DRAWN BY MLO
 CHECKED BY PBB
 DATE 4/04