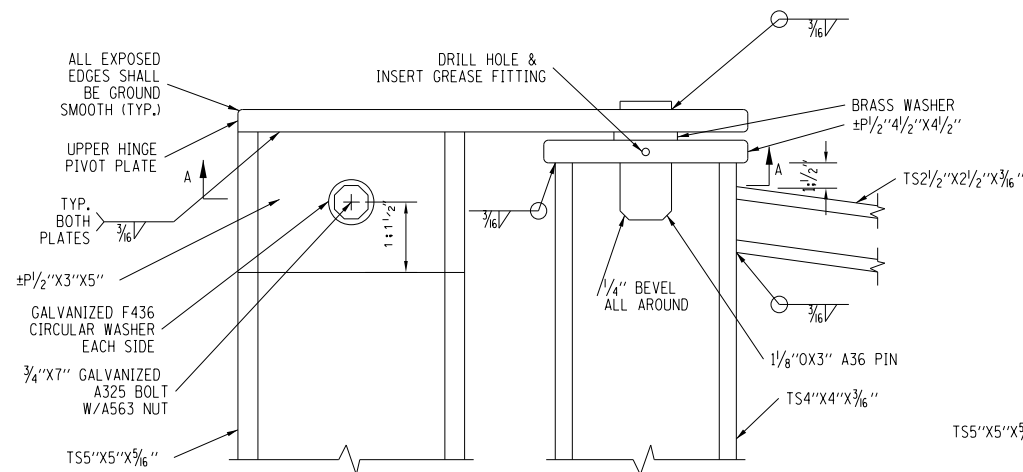


9:45:58 AM

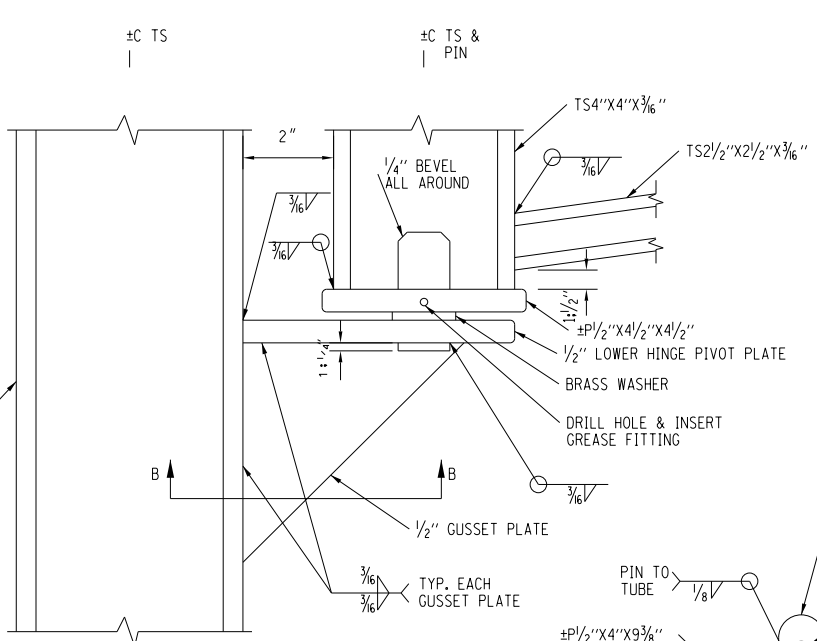
Mar-30-2011 09:45:58AM

\$FILE\$

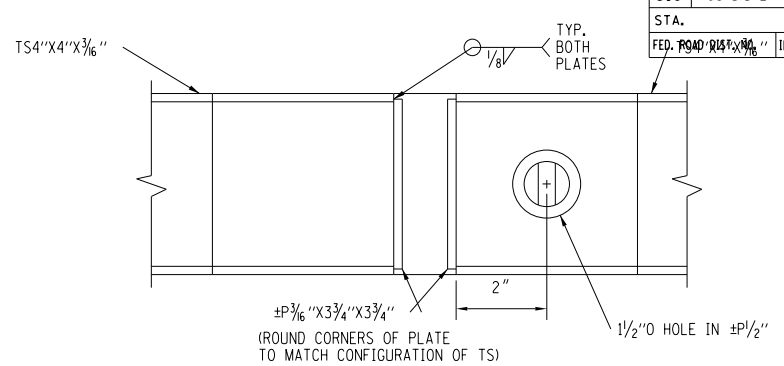
F.A.P. RTE.	SECTION	COUNTY	TOTAL SHEETS	SHEET NO.
310	69-3(3HB)	MORGAN	793	443
STA. 7940+01.00		TO STA. 7940+01.00		
ILLINOIS FED. AID PROJECT				



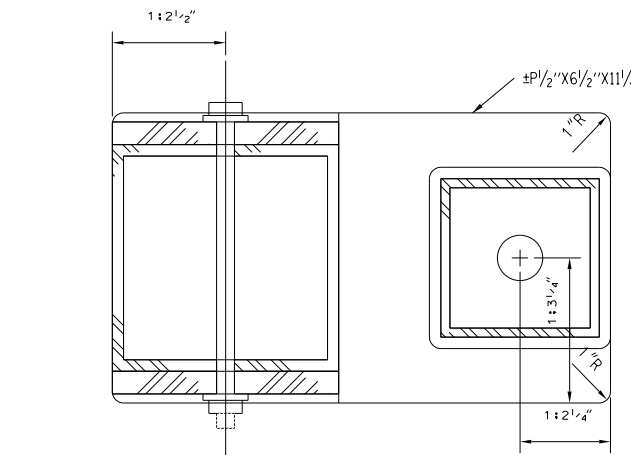
UPPER HINGE DETAIL NTS



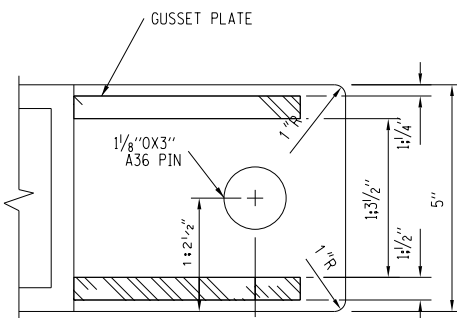
LOWER HINGE DETAIL NTS



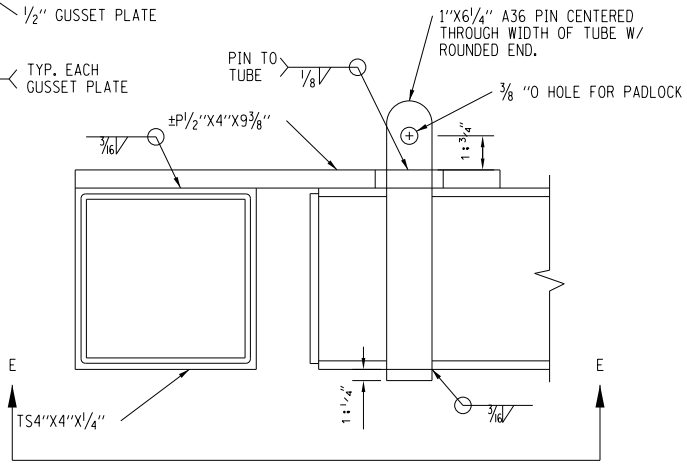
SECTION C NTS



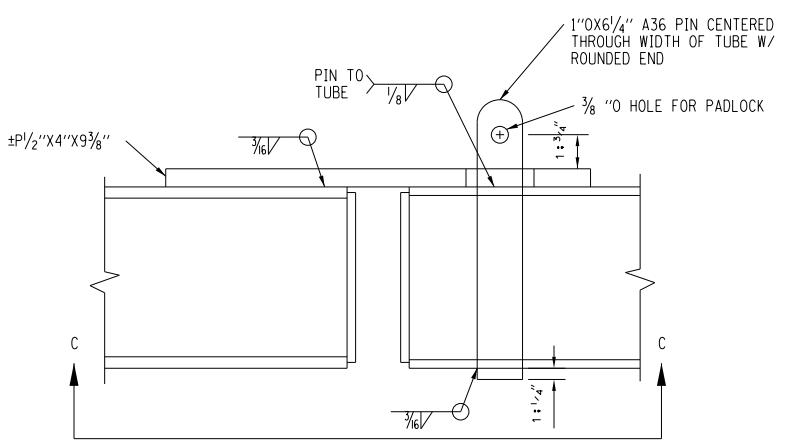
SECTION A-A NTS



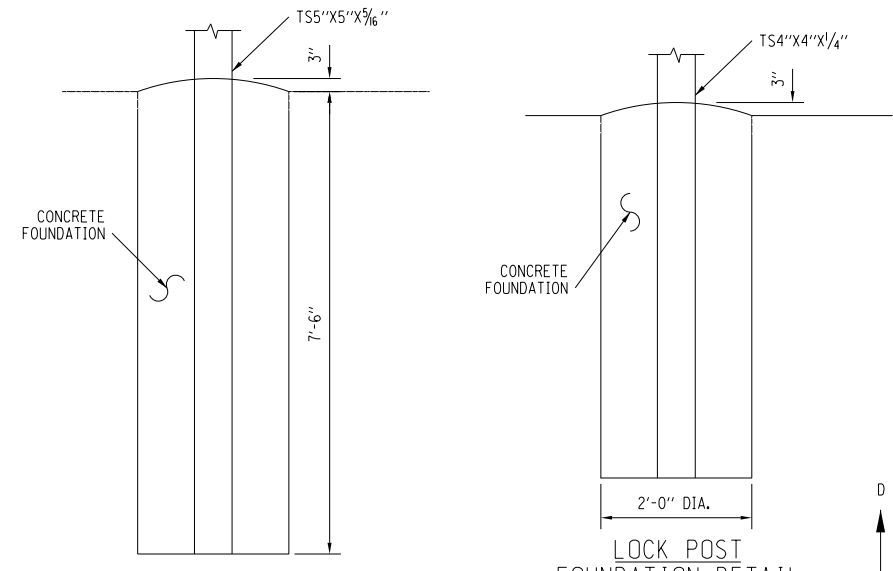
SECTION B-B NTS



SOUTH LOCK POST DETAIL NTS

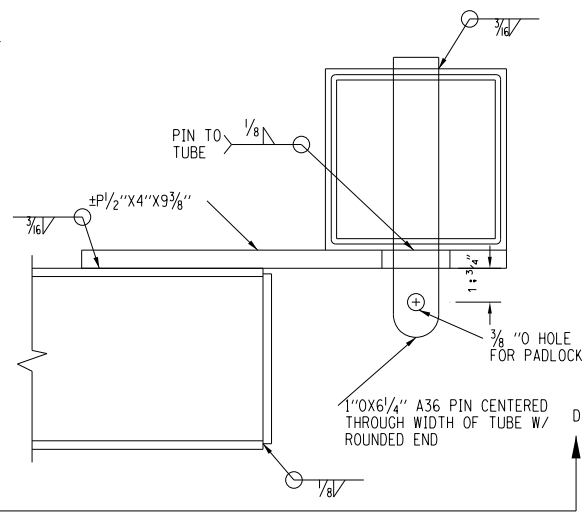


GATE-TO-GATE CONNECTION NTS

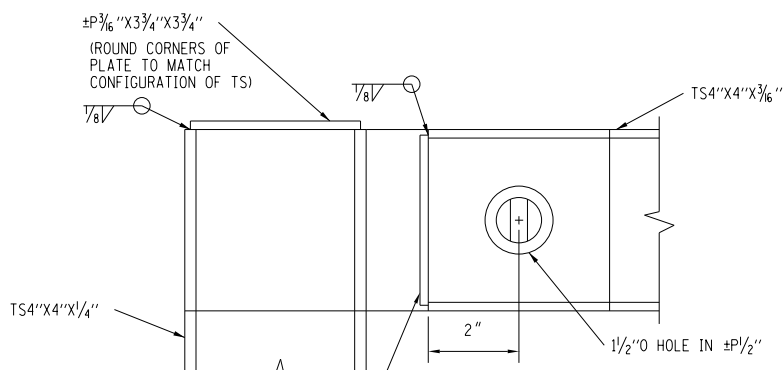


GATE POST FOUNDATION DETAIL NTS

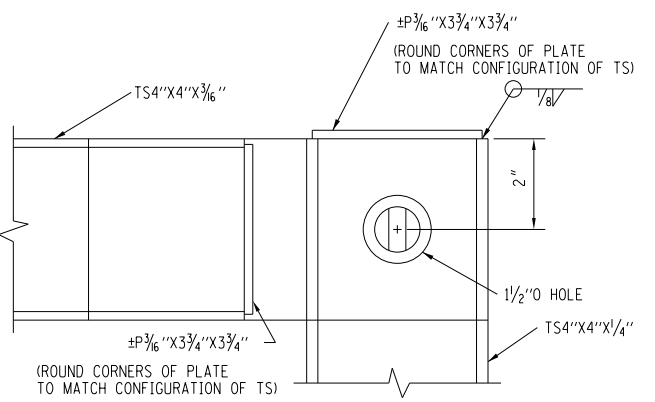
LOCK POST FOUNDATION DETAIL NTS



NORTH LOCK POST DETAIL NTS



SECTION E-E NTS



SECTION D-D NTS

• LAGRANGE WETLAND BANK
•• D6 WETLAND MITIGATION 3

REVISIONS	
NAME	DATE

ILLINOIS DEPARTMENT OF TRANSPORTATION
 MISCELLANEOUS DETAILS
 ACCESS GATE DETAILS
 FAP 310 (US 67/IL 104)
 SHEET 2 OF 2

DRAWN BY IDOT
CHECKED BY JCN