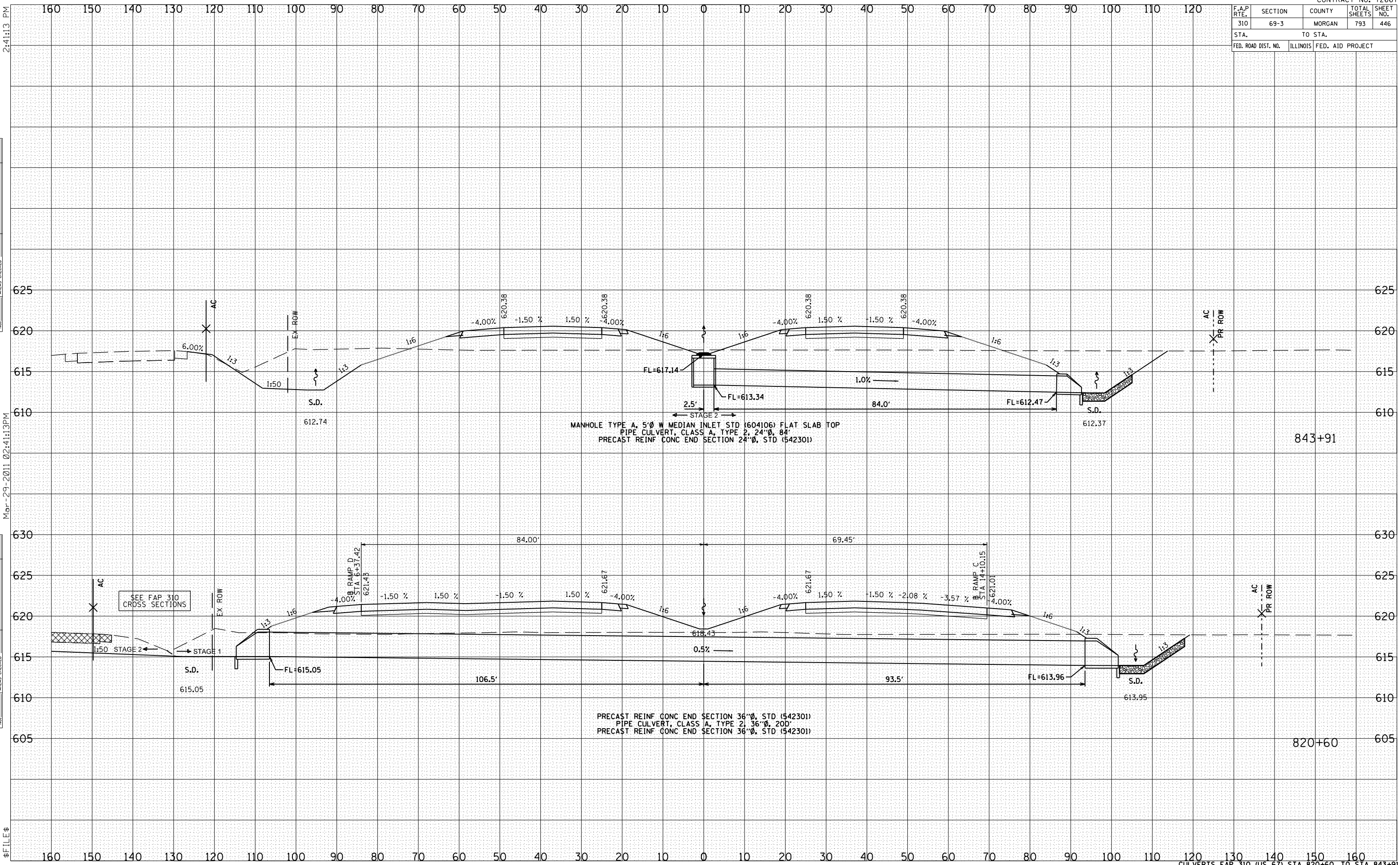


F.A.P. RTE.	SECTION	COUNTY	TOTAL SHEETS	SHEET NO.
310	69-3	MORGAN	793	446
STA.		TO STA.		
FED. ROAD DIST. NO.	ILLINOIS	FED. AID PROJECT		

DATE
BY
NO.
FINI SURVEY
SURVEY
PLOTTED
NOTE BOOK
NO.
SURVEY
PLOTTED
NOTE BOOK
NO.
AREAS CHECKED

DATE
BY
NO.
ORIGINAL SURVEY
SURVEY
PLOTTED
NOTE BOOK
NO.
SURVEY
PLOTTED
NOTE BOOK
NO.
AREAS CHECKED



MANHOLE TYPE A, 5' Ø W MEDIAN INLET STD (604106) FLAT SLAB TOP
 PIPE CULVERT, CLASS A, TYPE 2, 24" Ø, 84'
 PRECAST REINF CONC END SECTION 24" Ø, STD (542301)

PRECAST REINF CONC END SECTION 36" Ø, STD (542301)
 PIPE CULVERT, CLASS A, TYPE 2, 36" Ø, 200'
 PRECAST REINF CONC END SECTION 36" Ø, STD (542301)

SEE FAP 310 CROSS SECTIONS