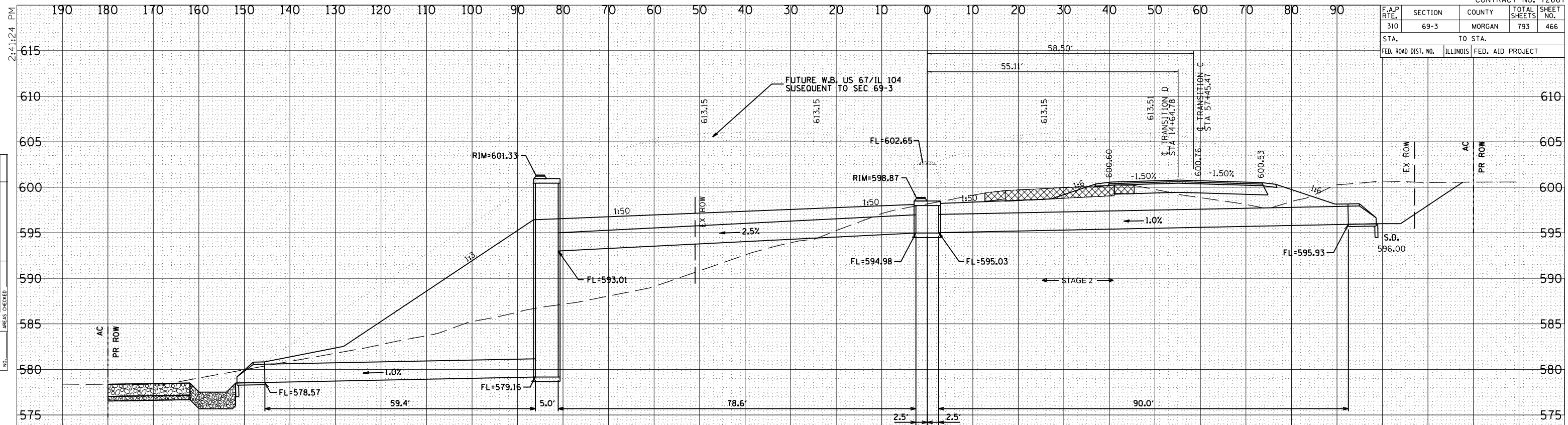
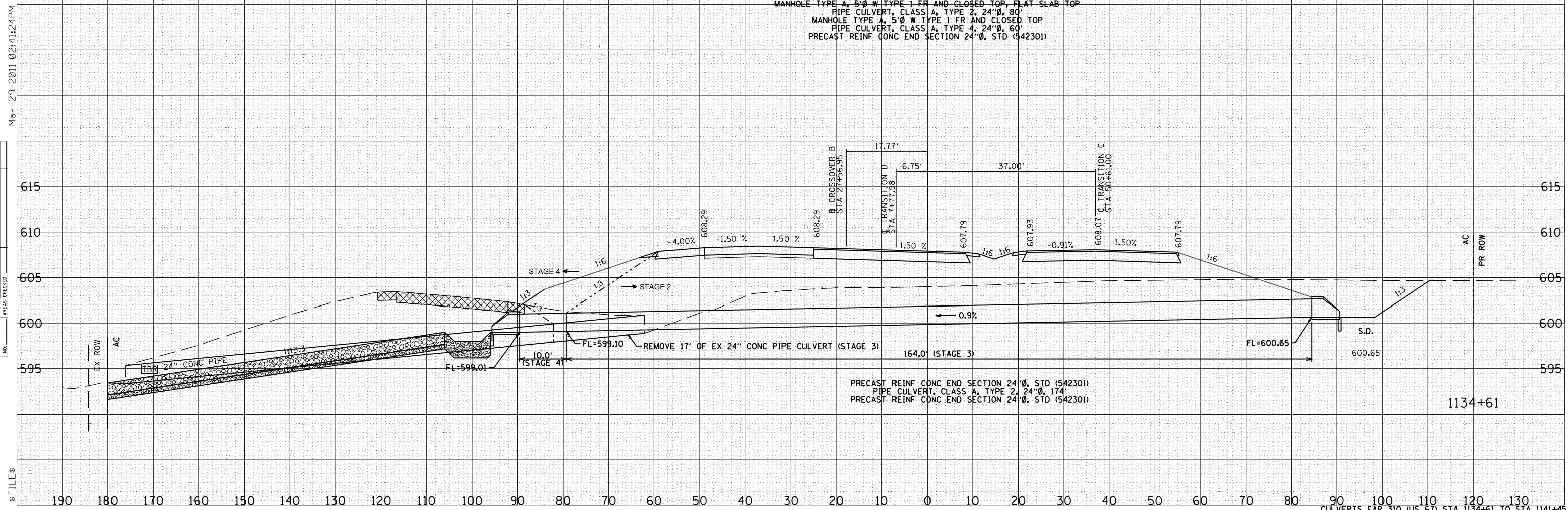


F.A.P. RTE.	SECTION	COUNTY	TOTAL SHEETS	SHEET NO.
310	69-3	MORGAN	793	466
STA.		TO STA.		
FED. ROAD DIST. NO.		ILLINOIS FED. AID PROJECT		



PRECAST REINF CONC END SECTION 24"Ø, STD (542301)
 PIPE CULVERT, CLASS A, TYPE 1, 24"Ø, 90'
 MANHOLE TYPE A, 5'Ø W TYPE 1 FR AND CLOSED TOP, FLAT SLAB TOP
 PIPE CULVERT, CLASS A, TYPE 2, 24"Ø, 80'
 MANHOLE TYPE A, 5'Ø W TYPE 1 FR AND CLOSED TOP
 PIPE CULVERT, CLASS A, TYPE 4, 24"Ø, 60'
 PRECAST REINF CONC END SECTION 24"Ø, STD (542301)

1141+45



PRECAST REINF CONC END SECTION 24"Ø, STD (542301)
 PIPE CULVERT, CLASS A, TYPE 2, 24"Ø, 174'
 PRECAST REINF CONC END SECTION 24"Ø, STD (542301)

1134+61

2:41:24 PM

BY	DATE

FINL SURVEY SURVEYED PLOTTED
 NOTE BOOK NO. DATE
 AREAS CHECKED NO.

Mar-29-2011 02:41:24 PM

BY	DATE

ORIGINAL SURVEY SURVEYED PLOTTED
 NOTE BOOK NO. DATE
 AREAS CHECKED NO.

\$FILE\$