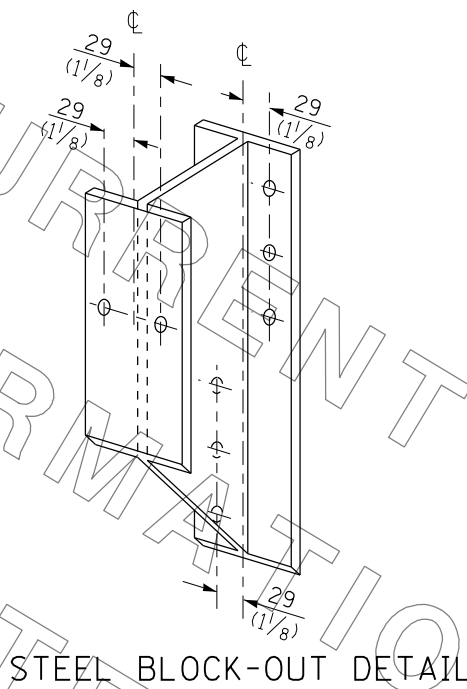
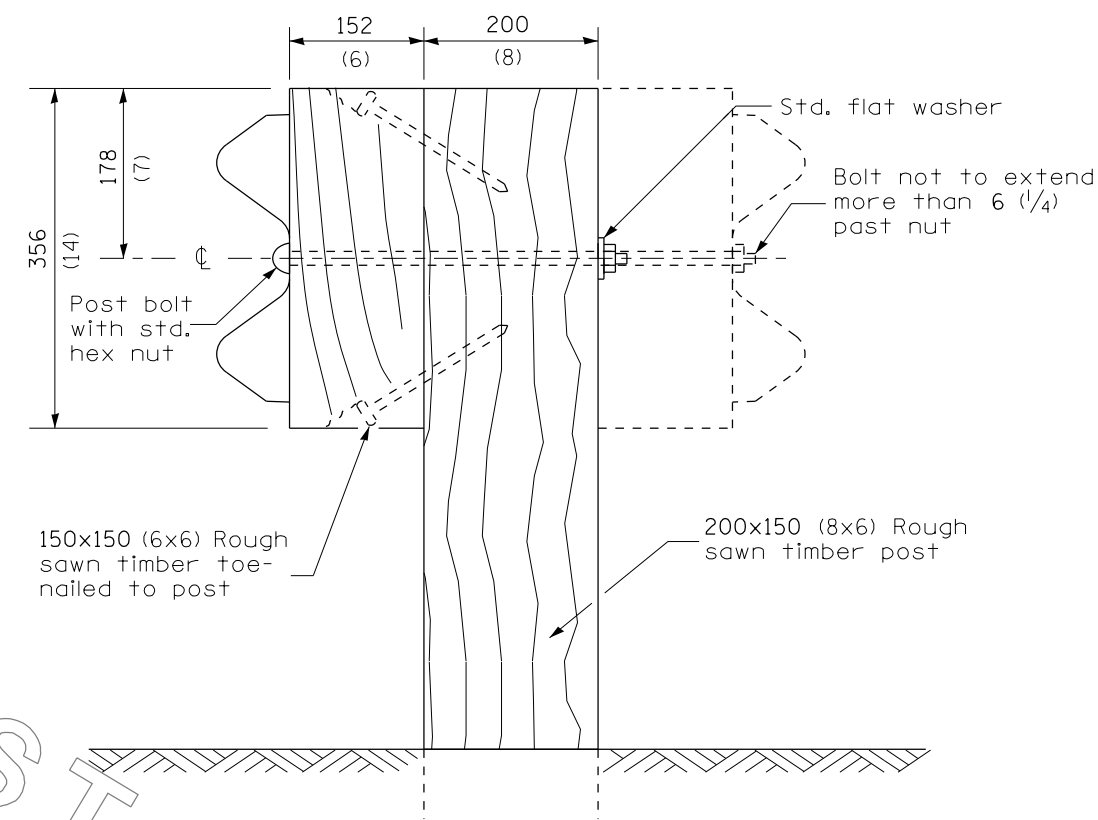


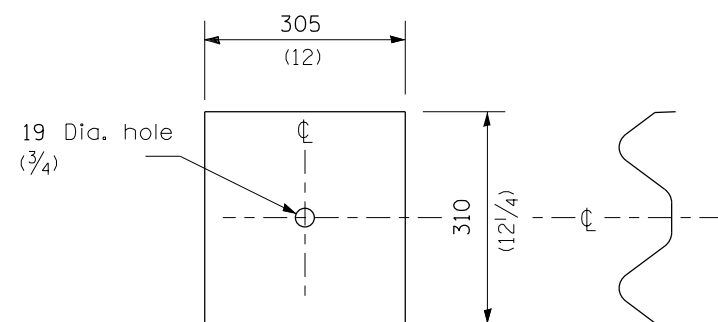
STEEL POST CONSTRUCTION



STEEL BLOCK-OUT DETAIL



WOOD POST CONSTRUCTION



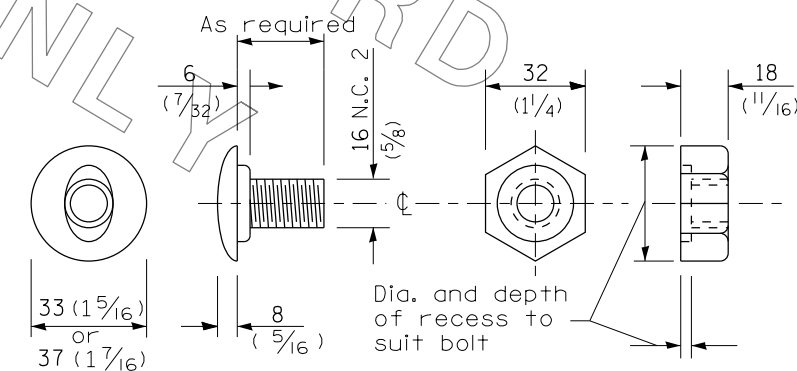
NOTE

Plate A shall be placed between rail element and block-out at non-splice mounting points only when steel block-outs are used.

PLATE A

**NOTE:**

THIS DETAIL SHALL BE USED FOR GUARDRAIL REPAIRS WHERE NEW STEEL PLATE BEAM GUARDRAIL AND TERMINAL SECTIONS WILL BE TIED INTO EXISTING STEEL PLATE BEAM GUARDRAIL AS WELL AS FOR REMOVING AND RE-ERECTING THE RAIL ELEMENT.



POST OR SPLICE BOLT & NUT

FILE NAME =	USER NAME = Sparksgw	DESIGNED -	REVISED -
ei:\pw\work\p\dot\sparksgw\10247485\0672E17-sht-guardrail-modification.dgn		DRAWN -	REVISED -
		CHECKED -	REVISED -
		DATE -	REVISED -

STATE OF ILLINOIS  
DEPARTMENT OF TRANSPORTATION

D6 GUARDRAIL END REPL  
GUARDRAIL MODIFICATION SHEETS

F.A.P. RTE.	SECTION	COUNTY	TOTAL SHEETS	SHEET NO.
	**	*	19	16
CONTRACT NO. 72E17				

SCALE: SHEET NO. OF SHEETS STA. TO STA.

ILLINOIS FED. AID PROJECT  
D6 GUARDRAIL END REPL 2011-3 • ADAMS, HANCOCK & SCHUYLER CO.