

F.A.I. RTE.	SECTION	COUNTY	TOTAL SHEETS	SHEET NO.
55	(54) INT PATCHING 2011	LOGAN	6	1
FED. ROAD DIST. NO.	ILLINOIS	CONTRACT NO. 72E40		

STATE OF ILLINOIS
DEPARTMENT OF TRANSPORTATION
DIVISION OF HIGHWAYS

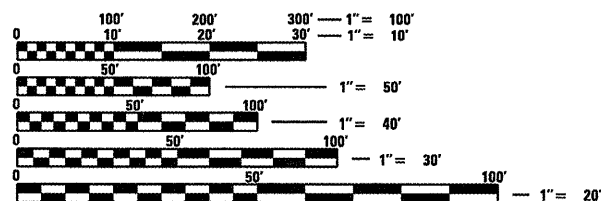
**PROPOSED
CONTRACT MAINTENANCE**

FAI 55 (I 55)
SECTION (54) INT PATCHING 2011

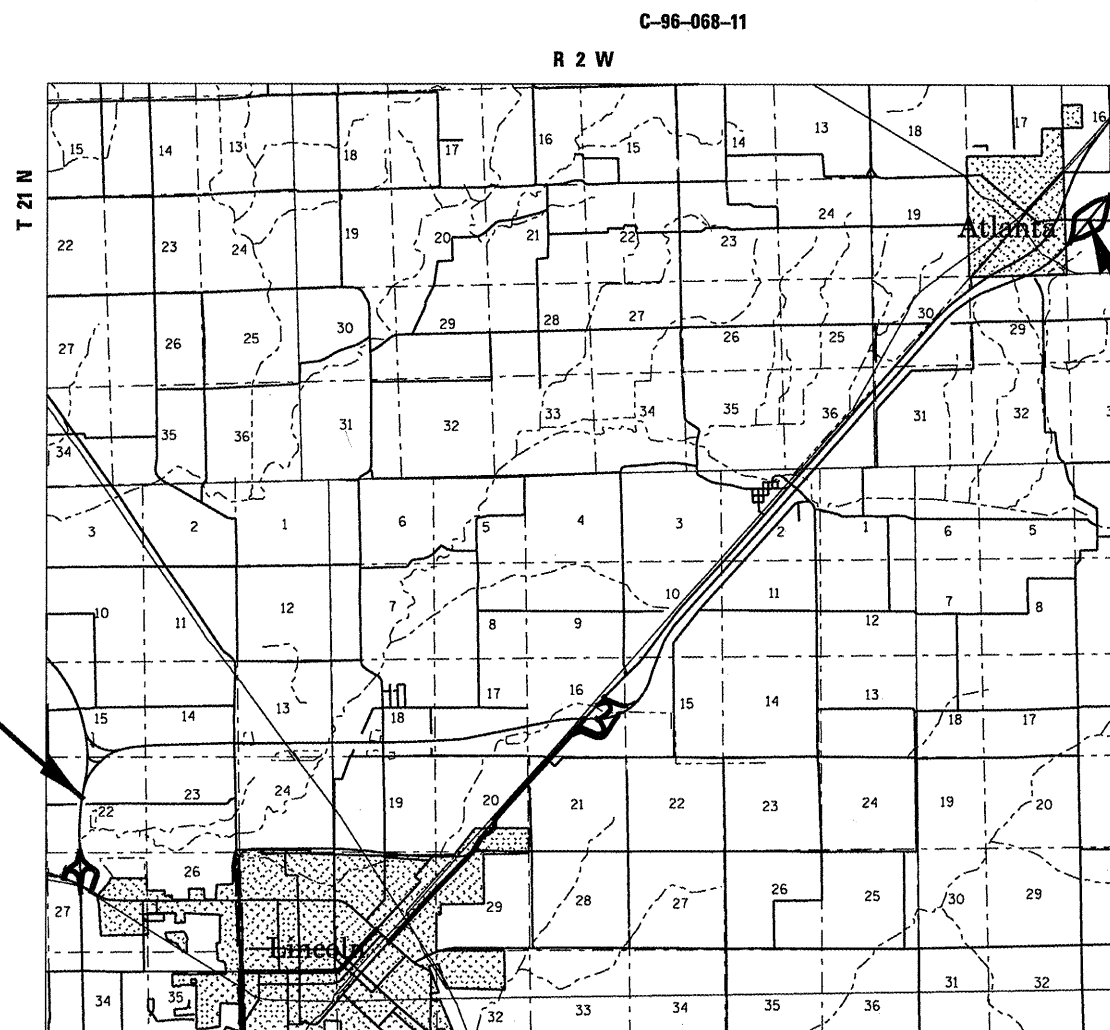
LOGAN COUNTY

FOR INDEX OF SHEETS, SEE SHEET NO. 2

A.D.T. = 3,450 (375)



FULL SIZE PLANS HAVE BEEN PREPARED USING STANDARD ENGINEERING SCALES. REDUCED SIZED PLANS WILL NOT CONFORM TO STANDARD SCALES. IN MAKING MEASUREMENTS ON REDUCED PLANS, THE ABOVE SCALES MAY BE USED.



BEGIN PROJECT
STA. 203 + 270.00

END PROJECT
STA. 227 + 000.00

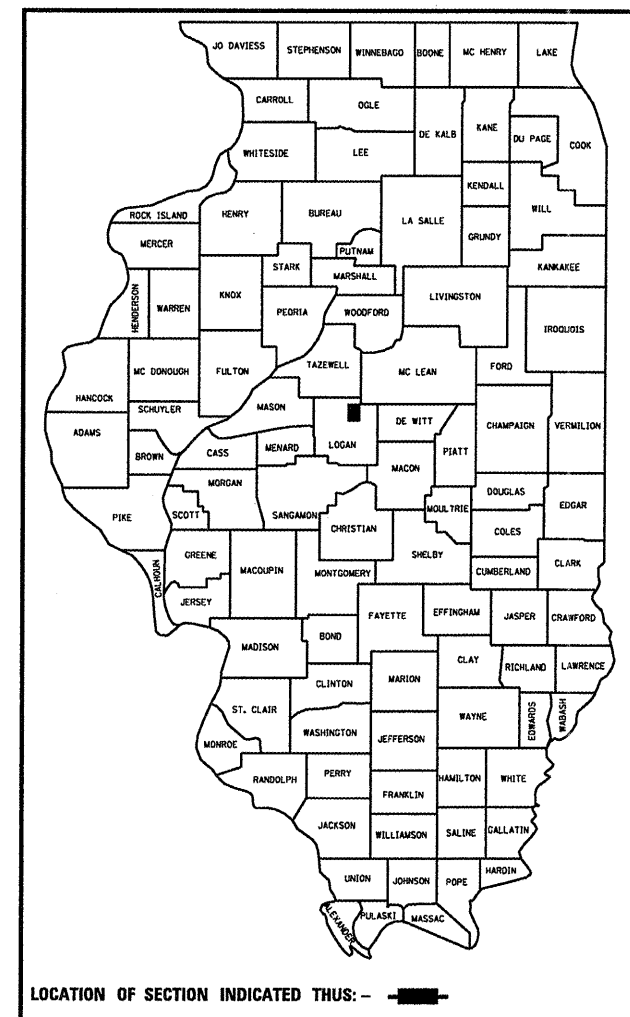
J.U.L.I.E.
JOINT UTILITY LOCATION INFORMATION FOR EXCAVATION
1-800-892-0123
OR 811

PLAN AND CONTRACT TECHNICIAN
TIMOTHY SHARP (217)782-7743

CONTRACT NO. 72E40

GROSS LENGTH = 82,348.00 FT. = 15.600 MILES

D-96-068-11



LOCATION OF SECTION INDICATED THUS: - [black rectangle] -

STATE OF ILLINOIS
DEPARTMENT OF TRANSPORTATION
DIVISION OF HIGHWAYS

SUBMITTED April 8 20 11

Regan Z. Dinkel
DEPUTY DIRECTOR OF HIGHWAYS, REGION ENGINEER

May 13 20 11

Scott E. Stitt P.E. I&L
acting ENGINEER OF DESIGN AND ENVIRONMENT

May 13 20 11

Christine M. Reader
DIRECTOR OF HIGHWAYS, CHIEF ENGINEER

PRINTED BY THE AUTHORITY
OF THE STATE OF ILLINOIS

INDEX

- 1 COVER
- 2 INDEX/STANDARDS/SIGNATURES
- 3 QUANTITIES
- 4 TYPICAL SECTIONS
- 5-6 SCHEDULES

STANDARDS

- 701101-02
- 701106-02
- 701400-05
- 701406-06
- 701411-07
- 701901-01

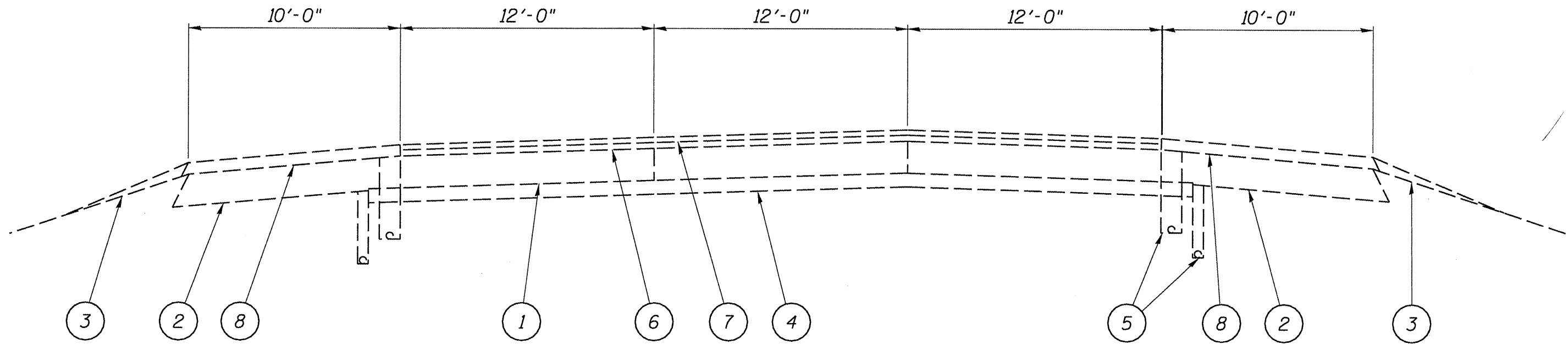
STATE OF ILLINOIS DEPARTMENT OF TRANSPORTATION DIVISION OF HIGHWAYS DISTRICT 6	
EXAMINED <u>APRIL 8</u> 20 <u>11</u>	<u><i>Chris Waller</i></u> ENGINEER OF OPERATIONS
EXAMINED <u>MARCH 29</u> 20 <u>11</u>	<u><i>Jimmy Ford</i></u> ENGINEER OF PROJECT IMPLEMENTATION
EXAMINED <u>MARCH 30</u> 20 <u>11</u>	<u><i>John C. Weyant</i></u> ENGINEER OF PROGRAM DEVELOPMENT

INDEX/STANDARDS/SIGNATURES
FAI 55 (I 55)
SECTION (54) INT PATCHING 2011
LOGAN COUNTY

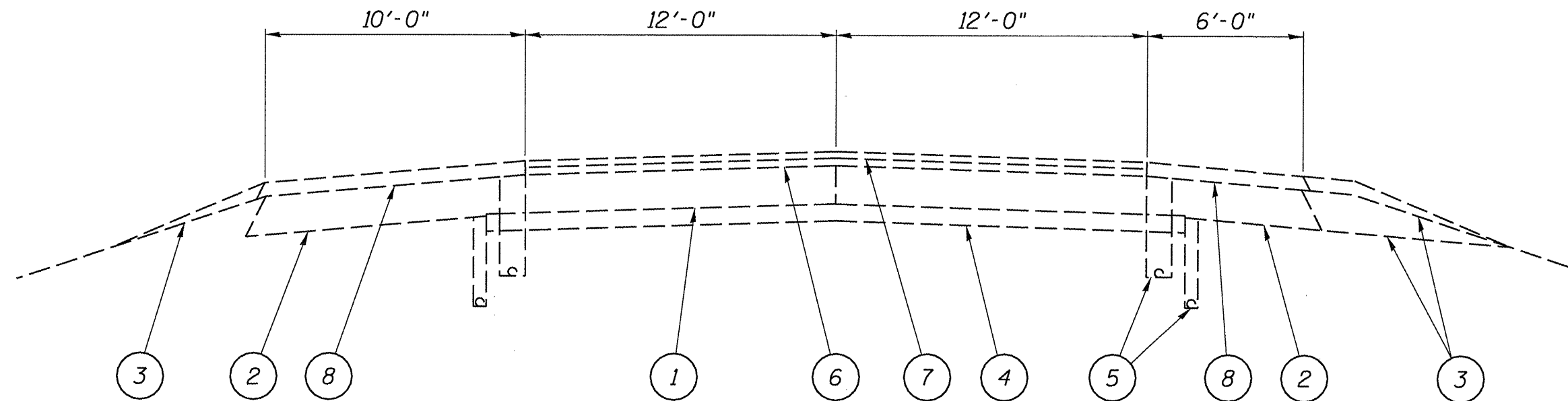
S U M M A R Y O F Q U A N T I T I E S

CODE NO.	ITEM	UNIT	100% STATE
			0005
			TOTAL QTY
44201692	CLASS D PATCHES, TYPE II, 4 INCH	SQ YD	567
44201694	CLASS D PATCHES, TYPE III, 4 INCH	SQ YD	51
44201696	CLASS D PATCHES, TYPE IV, 4 INCH	SQ YD	67
44213000	PATCH REINFORCEMENT	SQ YD	252
44213204	TIE BARS 3/4"	EACH	15
44213200	SAW CUTS	FOOT	1,398
67100100	MOBILIZATION	L SUM	1
70100420	TRAFFIC CONTROL AND PROTECTION, STANDARD 701411	EACH	6
70100700	TRAFFIC CONTROL AND PROTECTION, STANDARD 701406	L SUM	1
44200577	CLASS A PATCHES, TYPE II, 12 INCH	SQ YD	103
44200581	CLASS A PATCHES, TYPE III, 12 INCH	SQ YD	43
44200583	CLASS A PATCHES, TYPE IV, 12 INCH	SQ YD	66

QUANTITIES
FAI 55 (I 55)
SECTION (54) INT PATCHING 2011
LOGAN COUNTY



S.B. & N.B. FAI-55
STA. 203+270 TO 203+698.437



S.B. & N.B. FAI-55
STA. 203+698.437 TO 227+000

LEGEND

- 1 EXIST. CRC PAVEMENT 9"
- 2 EXIST. BITUMINOUS SHOULDER 9"
- 3 EXIST. AGGREGATE SHOULDER
- 4 EXIST. STABILIZED BASE 4"
- 5 EXIST. PIPE UNDERDRAINS
- 6 EXIST. BITUMINOUS CONCRETE BINDER COURSE 1 3/4"
- 7 EXIST. BITUMINOUS CONCRETE SURFACE COURSE 1 1/2"
- 8 EXIST. BITUMINOUS SHOULDERS 3 1/4"

TYPICALS
FAI 55 (I-55)
SECTION (54) INT PATCHING 2011
LOGAN COUNTY

PARTIAL DEPTH PATCHING SCHEDULE

LOCATION	LENGTH (FOOT)			SQ YD	(SQ YD)					
	PASSING	DRIVING	WIDTH		TY II	TY III	TY IV	TY II	TY III	TY IV
SOUTHBOUND I-55										
STA 224+391	6.0		12.0	8.0	8.0					
STA 217+900	6.0		12.0	8.0	8.0					
STA 217+885	30.0		12.0	40.0			40.0			
STA 217+900		6.0	12.0	8.0				8.0		
STA 217+809		20.0	12.0	26.7						26.7
STA 217+648		6.0	12.0	8.0				8.0		
STA 217+000		10.0	12.0	13.3				13.3		
STA 216+600		6.0	12.0	8.0				8.0		
STA 215+230		6.0	12.0	8.0				8.0		
STA 215+220		8.0	12.0	10.7				10.7		
STA 215+970		8.0	12.0	10.7				10.7		
STA 214+300		6.0	12.0	8.0				8.0		
STA 214+178		6.0	12.0	8.0				8.0		
STA 214+022		6.0	12.0	8.0				8.0		
STA 213+800		6.0	12.0	8.0				8.0		
STA 213+739		6.0	12.0	8.0				8.0		
STA 213+592		6.0	12.0	8.0				8.0		
STA 213+585		6.0	12.0	8.0				8.0		
STA 212+724		6.0	12.0	8.0				8.0		
STA 212+609		8.0	12.0	10.7				10.7		
STA 212+300		6.0	12.0	8.0				8.0		
STA 212+209		6.0	12.0	8.0				8.0		
STA 211+861		12.0	12.0	16.0					16.0	
STA 211+761		6.0	12.0	8.0				8.0		
STA 211+230		6.0	12.0	8.0				8.0		
STA 211+109		6.0	12.0	8.0				8.0		
STA 210+900		6.0	12.0	8.0				8.0		
STA 210+791		6.0	12.0	8.0				8.0		
STA 210+600		6.0	12.0	8.0				8.0		
STA 209+939		6.0	12.0	8.0				8.0		
STA 209+800		6.0	12.0	8.0				8.0		
STA 209+500		6.0	12.0	8.0				8.0		
STA 209+361		6.0	12.0	8.0				8.0		
STA 209+061		6.0	12.0	8.0				8.0		
STA 206+891		6.0	12.0	8.0				8.0		
STA 206+515		6.0	12.0	8.0				8.0		
STA 205+670		6.0	12.0	8.0				8.0		
STA 203+270	6.0		12.0	8.0	8.0					
STA 203+270	6.0		12.0	8.0	8.0					
STA 203+309	6.0		12.0	8.0	8.0					
STA 203+309	6.0		12.0	8.0	8.0					
TOTALS				400.0	48.0	0.0	40.0	269.4	16.0	26.7

NOTES:

1. STATIONS ARE APPROXIMATE.

PARTIAL DEPTH PATCHING SCHEDULE

LOCATION	LENGTH (FOOT)			SQ YD	(SQ YD)					
	PASSING	DRIVING	WIDTH		TY II	TY III	TY IV	TY II	TY III	TY IV
NORTHBOUND I-55										
STA 203+422		7.0	12.0	9.3						9.3
STA 204+346		6.0	12.0	8.0						8.0
STA 204+523		6.0	12.0	8.0						8.0
STA 204+600		6.0	12.0	8.0						8.0
STA 204+691		6.0	12.0	8.0						8.0
STA 205+054		6.0	12.0	8.0						8.0
STA 205+139		6.0	12.0	8.0						8.0
STA 207+500		8.0	12.0	10.7						10.7
STA 207+776	6.0		12.0	8.0	8.0					
STA 207+776	6.0		12.0	8.0	8.0					
STA 209+461	6.0		12.0	8.0	8.0					
STA 209+730		6.0	12.0	8.0						8.0
STA 210+291		6.0	12.0	8.0						8.0
STA 210+130		6.0	12.0	8.0						8.0
STA 212+005		14.0	12.0	18.7						18.7
STA 212+252		6.0	12.0	8.0						8.0
STA 213+161		8.0	12.0	10.7						10.7
STA 213+161	12.0		12.0	16.0		16.0				
STA 213+522	10.0		12.0	13.3	13.3					
STA 214+030		8.0	12.0	10.7						10.7
STA 214+239		6.0	12.0	8.0						8.0
STA 214+430		6.0	12.0	8.0						8.0
STA 214+415	7.0		12.0	9.3	9.3					
STA 214+791		6.0	12.0	8.0						8.0
STA 216+930		6.0	12.0	8.0						8.0
STA 219+550		6.0	12.0	8.0						8.0
STA 220+800		6.0	12.0	8.0						8.0
STA 220+750		6.0	12.0	8.0						8.0
STA 221+445		6.0	12.0	8.0						8.0
STA 225+109		6.0	12.0	8.0						8.0
STA 227+000	7.0		12.0	9.3	9.3					
TOTALS				284.0	55.9	16.0	0.0	193.4	18.7	0.0

MIXTURE REQUIREMENTS

THE FOLLOWING MIXTURE REQUIREMENTS
ARE APPLICABLE FOR THIS PROJECT

MIXTURE USE(S):	PAVEMENT PATCHING
AC/PG	SBS PG 70-22
DESIGN AIR VOIDS:	4.0% @ N DESIGN = 105
MIXTURE COMP:	IL 9.5 OR 12.5 (SEE NOTE)
FRICITION AGG:	MIX D

NOTE:

IL 9.5 MAY NOT BE PLACED AS ONE 4" LIFT

SCHEDULES
FAI 55 (I-55)
SECTION (54) INT PATCHING 2011
LOGAN COUNTY

LOCATION	LENGTH (FOOT)		WIDTH	SQ YD FULL DEPTH	PATCHING SCHEDULE CLASS A PACTHES (SQ YD)						SAW CUTS		TIE BARS		PATCHING REINFORCEMENT	
					TY II	TY III	TY IV	TY II	TY III	TY IV	(FOOT)		(EACH)		(SQ YD)	
					PASSING			DRIVING			PASSING	DRIVING	PASSING	DRIVING	PASSING	DRIVING
SOUTHBOUND I-55	PASSING	DRIVING									PASSING	DRIVING	PASSING	DRIVING	PASSING	DRIVING
STA 217+709		6.0	12.0	8.0				8.0				60.0				8.0
STA 215+560		6.0	12.0	8.0				8.0				60.0				8.0
STA 212+500		6.0	12.0	8.0				8.0				60.0				8.0
STA 211+815		6.0	12.0	8.0				8.0				60.0				8.0
STA 210+661		6.0	12.0	8.0				8.0				60.0				8.0
STA 208+209		6.0	12.0	8.0				8.0				60.0				8.0
TOTALS				48.0	0.0	0.0	0.0	48.0	0.0	0.0	0.0	360.0	0	0	0.0	48.0

LOCATION	LENGTH (FOOT)		WIDTH	SQ YD FULL DEPTH	PATCHING SCHEDULE CLASS A PATCHES (SQ YD)						SAW CUTS		TIE BARS		PATCHING REINFORCEMENT	
					TY II	TY III	TY IV	TY II	TY III	TY IV	(FOOT)		(EACH)		(SQ YD)	
					PASSING			DRIVING			PASSING	DRIVING	PASSING	DRIVING	PASSING	DRIVING
NORTHBOUND I-55	PASSING	DRIVING									PASSING	DRIVING	PASSING	DRIVING	PASSING	DRIVING
STA 203+610		8.0	12.0	10.7				10.7				64.0				10.7
STA 203+483		29.0	12.0	38.7						38.7		106.0		15		38.7
STA 203+483		9.0	12.0	12.0				12.0				66.0				12.0
STA 206+400		6.0	12.0	8.0				8.0				60.0				8.0
STA 209+461		6.0	12.0	8.0				8.0				60.0				8.0
STA 212+300		16.0	12.0	21.3					21.3			80.0				21.3
STA 212+424		6.0	12.0	8.0				8.0				60.0				8.0
STA 213+191		16.0	12.0	21.3					21.3			80.0				21.3
STA 213+499		20.0	12.0	26.7						26.7		88.0				26.7
STA 215+355		6.0	12.0	8.0				8.0				60.0				8.0
TOTALS				162.7	0.0	0.0	0.0	54.7	42.6	65.4	0.0	724.0	0	15	0.0	162.7

NOTES:

1. STATIONS ARE APPROXIMATE.

SCHEDULES
FAI 55 (I-55)
SECTION (54) INT PATCHING 2011
LOGAN COUNTY