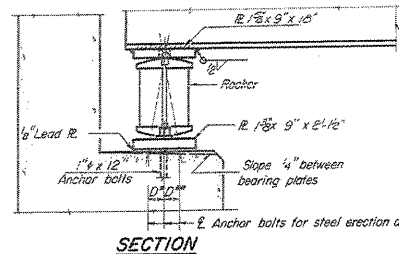
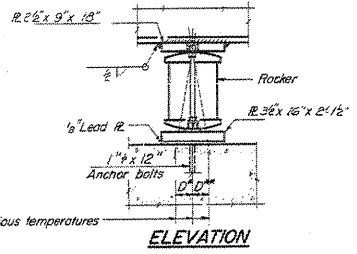


STATE OF ILLINOIS
DEPARTMENT OF TRANSPORTATION

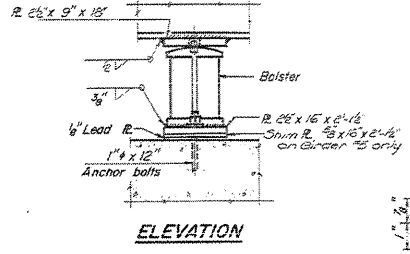
PROJECT NO.	DATE	SCALE	SHEET NO.	TOTAL SHEETS
11-1324	10/25	1/4" = 1'-0"	24	24



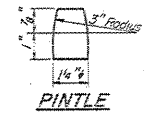
SECTION



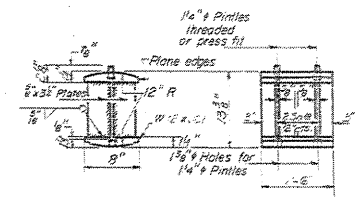
ELEVATION



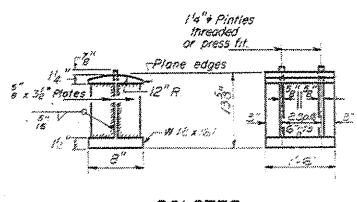
ELEVATION



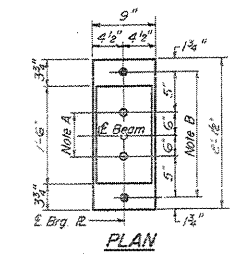
PINTLE



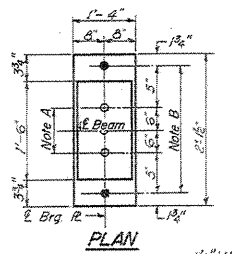
ROCKER



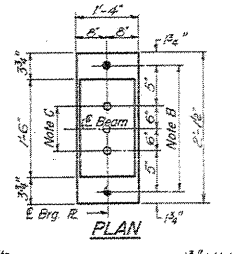
BOLSTER



PLAN
AT PIERS 1 & 4



PLAN
AT PIER 3



PLAN
AT PIER 2

NOTE A
1/2" Holes - 1" deep in top R.
for pintles. Thread or press fit
pintles into bottom R.

NOTE B
1/2" Holes for 1" anchor bolts.
1/2 x 2 1/2 x 2 1/2 R. Washers
under nut.

NOTE C
1/2" Holes 1" deep in top R.
only for 1/4" pintles.

NOTES ON SETTING OF ANCHOR BOLTS AT EXP. BRGS.

- a) D^* (Side of brg. away from fixed brg.)
 $D^* = 1/4"$ per each 100' of expansion for
every 15° fall below the normal temp.
of 50°F.
 D^{**} (Side of brg. toward fixed brg.)
 $D^{**} = 1/4"$ per each 100' of expansion for
every 15° rise above the normal temp.
of 50°F.
- b) After beams have been erected and dimensions D^* or D^{**}
determined, holes shall be drilled and anchor bolts shall
be grouted in place. All fixed anchor bolts may be built
into the masonry.

BEARING ASSEMBLY DETAILS

DESIGNED BY C.H. HULL	EXAMINED BY March 20 1975 Paul L. Thompson
CHECKED BY P.G. BENTON	PASSED
DRAWN BY P.G. BENTON	APPROVED
CHECKED BY	

BEARING DETAILS
FA. RTE. 137th SEC. 18th
LAWRENCE COUNTY
STA. 29+99.64

74520
SHEET 9 OF 9