

FOR INDEX OF SHEETS, SEE SHEET NO. 2

FOR LIST OF HIGHWAY STANDARDS, SEE SHEET NO. 2

STATE OF ILLINOIS
DEPARTMENT OF TRANSPORTATION
DIVISION OF HIGHWAYS

PROPOSED
HIGHWAY PLANS

FAI ROUTE 270 (INTERSTATE 270)
SECTION 60-1B-1
PROJECT ACIM-ACBRI-270-5(086)002
I-270 OVER CHAIN OF ROCKS CANAL
STRUCTURE REPLACEMENT
MADISON COUNTY

C-98-068-07

F.A.I. RTE.	SECTION	COUNTY	TOTAL SHEETS	SHEET NO.
270	60-1B-1	MADISON	712	1

ILLINOIS CONTRACT NO. 76A91
*712+28 = 740

D-98-063-07



LOCATION OF SECTION INDICATED THUS: -

PLANS PREPARED BY:

HDR 8550 W. Bryn Mawr Ave., Suite 900
Chicago, IL 60631
312-443-4900
HDR Engineering, Inc.

STATE OF ILLINOIS
DEPARTMENT OF TRANSPORTATION
DIVISION OF HIGHWAYS

SUBMITTED March 25 20 11

Mary C. Jamie
DEPUTY DIRECTOR OF HIGHWAYS, REGION 5 ENGINEER

May 13 20 11
Scott E. Stitt, P.E.
ENGINEER OF DESIGN AND ENVIRONMENT

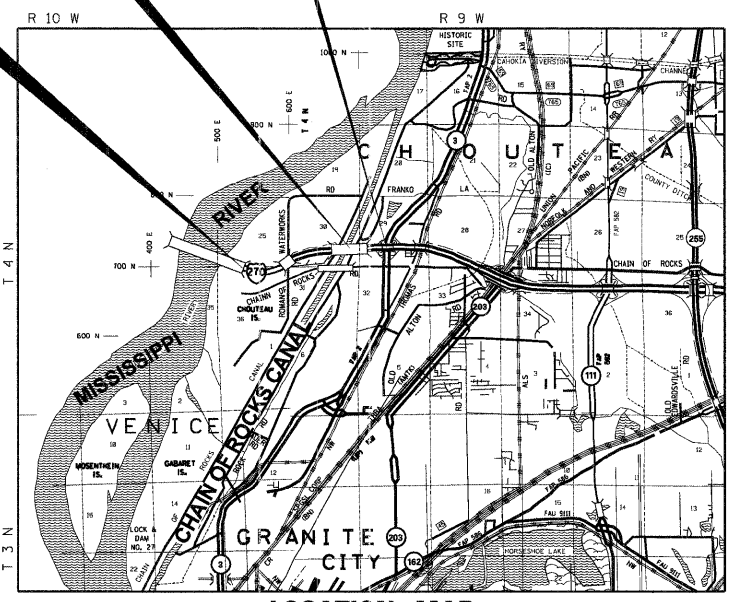
May 13 20 11
Christine M. Reed
DIRECTOR OF HIGHWAYS, CHIEF ENGINEER

PRINTED BY THE AUTHORITY
OF THE STATE OF ILLINOIS

BRIDGE REPLACEMENT
I-270 OVER CHAIN OF ROCKS
CANAL AND LEVEE
EXIST SN 060-0036 (EB)
EXIST SN 060-0037 (WB)
PROP SN 060-0345
1980'-6" BK-BK ABUT

END PROJECT
FAI 270 (I-270)
STA 1231+57.00

BEGIN PROJECT
FAI 270 (I-270)
STA 1158+00.00
STA 120+61.00 TO STA 158+00.00
(GUARDRAIL REPLACEMENT ONLY)



LOCATION MAP
SCALE: 1" = 1 MILE

GROSS LENGTH = 1.37 MILES
NET LENGTH = 1.37 MILES
LONGITUDE = 90.12341
LATITUDE = 38.76732

TRAFFIC DATA

DESIGN DESIGNATION:

FAI 270 (I-270) = 65,500 (30)
FREEWAY 7.90 (FD-20)
FAP 2 (IL RTE 3) = 18,900 (30)
OTHER PRINCIPAL ARTERIAL 7.90(FD-20)

ADT:

I-270 = 54,700 (2007)
= 68,800 (2030)
= 2.7% (SU)
= 17.1% (MU)

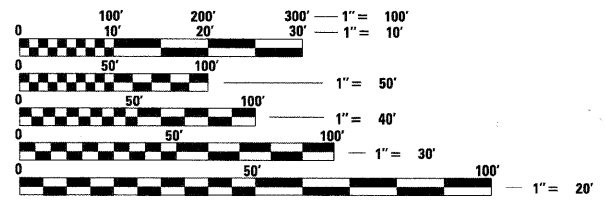
IL RTE 3 = 19,100 (2007)
= 23,500 (2030)
= 7.3% (SU)
= 7.6% (MU)

DESIGN SPEED:

FAI 270 (I-270) = 60 MPH
FAP 2 (IL RTE 3) = 60 MPH
RAMP P1 = 50 MPH
RAMP P4 = 45 MPH

POSTED SPEED:

FAI 270 (I-270) = 55 MPH
FAP 2 (IL RTE 3) = 50 MPH
RAMP P1 = 40 MPH
RAMP P4 = 35 MPH



FULL SIZE PLANS HAVE BEEN PREPARED USING STANDARD
ENGINEERING SCALES. REDUCED SIZED PLANS WILL NOT
CONFORM TO STANDARD SCALES. IN MAKING MEASUREMENTS
ON REDUCED PLANS, THE ABOVE SCALES MAY BE USED.

J.U.L.I.E.
JOINT UTILITY LOCATION INFORMATION FOR EXCAVATION
1-800-892-0123
OR 811

PROJECT ENGINEER PATTI LeBEAU, P.E. (618) 346-3179
PROJECT MANAGER BILLIE OWEN, P.E. (618) 346-3189

CONTRACT NO. 76A91

- BY: [Signature] DATE: 3/15/11
HDR SHTS. 88-210
LICENSE EXPIRES 11-30-11
- BY: [Signature] DATE: 3/15/11
HDR SHTS. 1-270, 28-77, 277-278, 30-319, 538-632, 708-711
LICENSE EXPIRES 11-30-11
- BY: [Signature] DATE: 3/15/11
VOLKERT SHTS. 28-37, 78-87, 11-249, 249-310, 433-707
LICENSE EXPIRES 11-30-11
- BY: [Signature] DATE: 3/15/11
McDONOUGH SHTS. 150-206
LICENSE EXPIRES 11-30-11
- BY: [Signature] DATE: 3/15/11
ABNA ENGINEERING SHTS. 520-548
LICENSE EXPIRES 11-30-11
- BY: [Signature] DATE: 3/15/11
COOMBE-BLODORF SHTS. 367-379, 512-537
LICENSE EXPIRES 11-30-12
- BY: [Signature] DATE: 2/15/2011
HDR SHTS. 320-446, 451-460, 469-478, 483-512
LICENSE EXPIRES 11-30-12
- BY: [Signature] DATE: 03/13/2011
McDONOUGH SHTS. 447-450, 461-468, 479-482, 53-57, 11/30/12
LICENSE EXPIRES 11-30-12