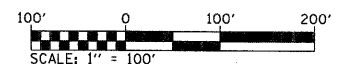
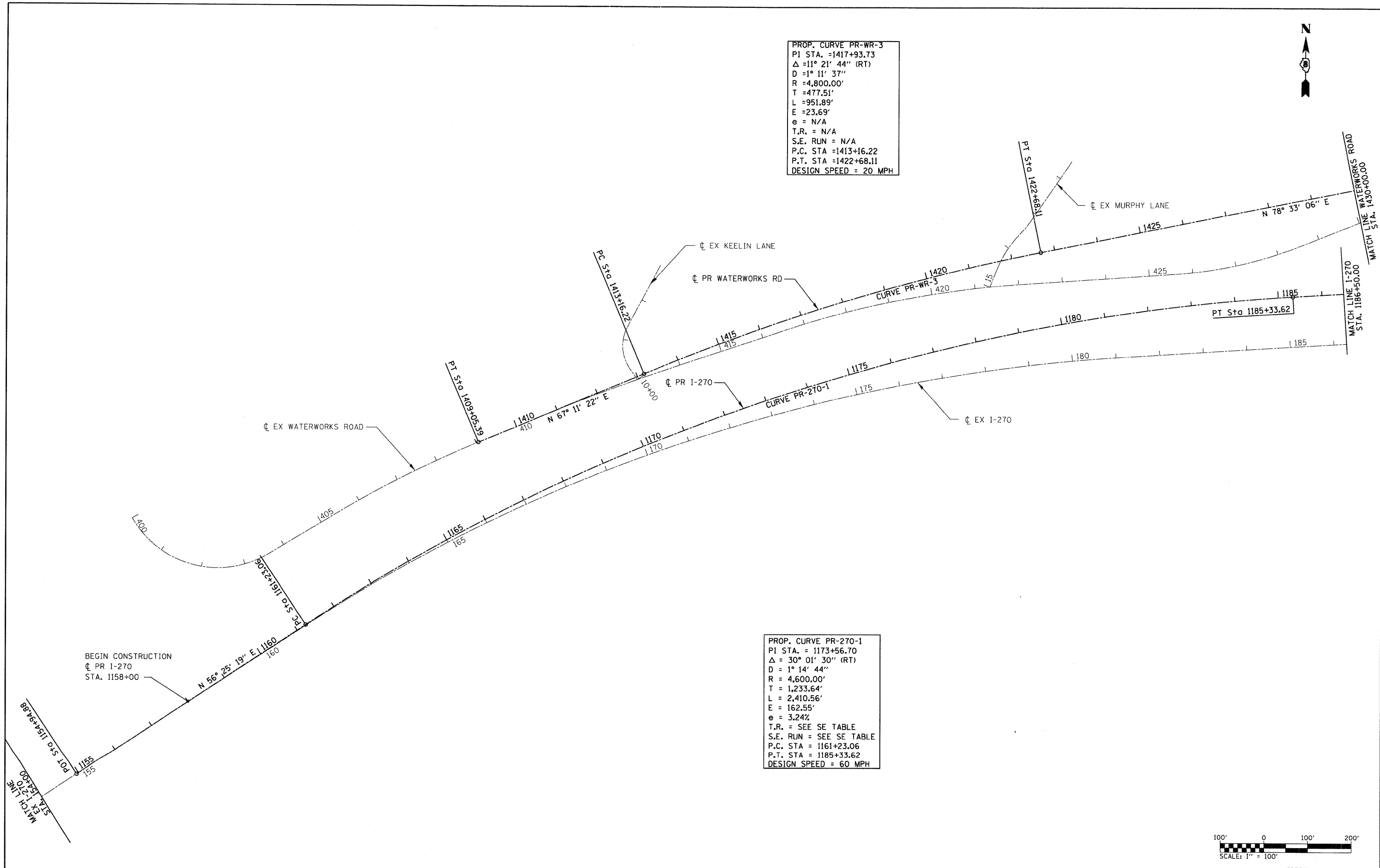




PROP. CURVE PR-WR-3
 PI STA. =1417+93.73
 $\Delta = 11^\circ 21' 44''$ (RT)
 $D = 1^\circ 11' 37''$
 $R = 4,800.00'$
 $T = 477.51'$
 $L = 951.89'$
 $E = 23.69'$
 $e = N/A$
 $T.R. = N/A$
 $S.E. RUN = N/A$
 $P.C. STA = 1413+16.22$
 $P.T. STA = 1422+68.11$
 DESIGN SPEED = 20 MPH

PROP. CURVE PR-270-1
 PI STA. = 1173+56.70
 $\Delta = 30^\circ 01' 30''$ (RT)
 $D = 1^\circ 14' 44''$
 $R = 4,600.00'$
 $T = 1,233.64'$
 $L = 2,410.56'$
 $E = 162.55'$
 $e = 3.24\%$
 $T.R. = \text{SEE SE TABLE}$
 $S.E. RUN = \text{SEE SE TABLE}$
 $P.C. STA = 1161+23.06$
 $P.T. STA = 1185+33.62$
 DESIGN SPEED = 60 MPH



FILE NAME = DB76A91-Sht-ATB02.dgn
VOLKERT

| | | |
|------------------------------|------------------|-----------|
| USER NAME = mmccanachie | DESIGNED - CLS | REVISED - |
| PLOT SCALE = 100,0000' / IN. | DRAWN - MAM | REVISED - |
| PLOT DATE = 3/15/2011 | CHECKED - CLS | REVISED - |
| | DATE - 3/18/2011 | REVISED - |

**STATE OF ILLINOIS
 DEPARTMENT OF TRANSPORTATION**

ALIGNMENTS AND TIES

SCALE: 1" = 100' SHEET NO. 2 OF 10 SHEETS STA. EX 154+00 TO STA. 1186+50

| | | | | |
|--------------------|-----------------|----------------|------------------|---------------------------|
| F.A.I. RTE. 270 | SECTION 60-1B-1 | COUNTY MADISON | TOTAL SHEETS 712 | SHEET NO. 29 |
| CONTRACT NO. 76A91 | | | | ILLINOIS FED. AID PROJECT |

NAVD 1929 = 1983