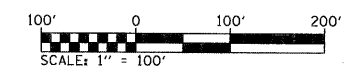
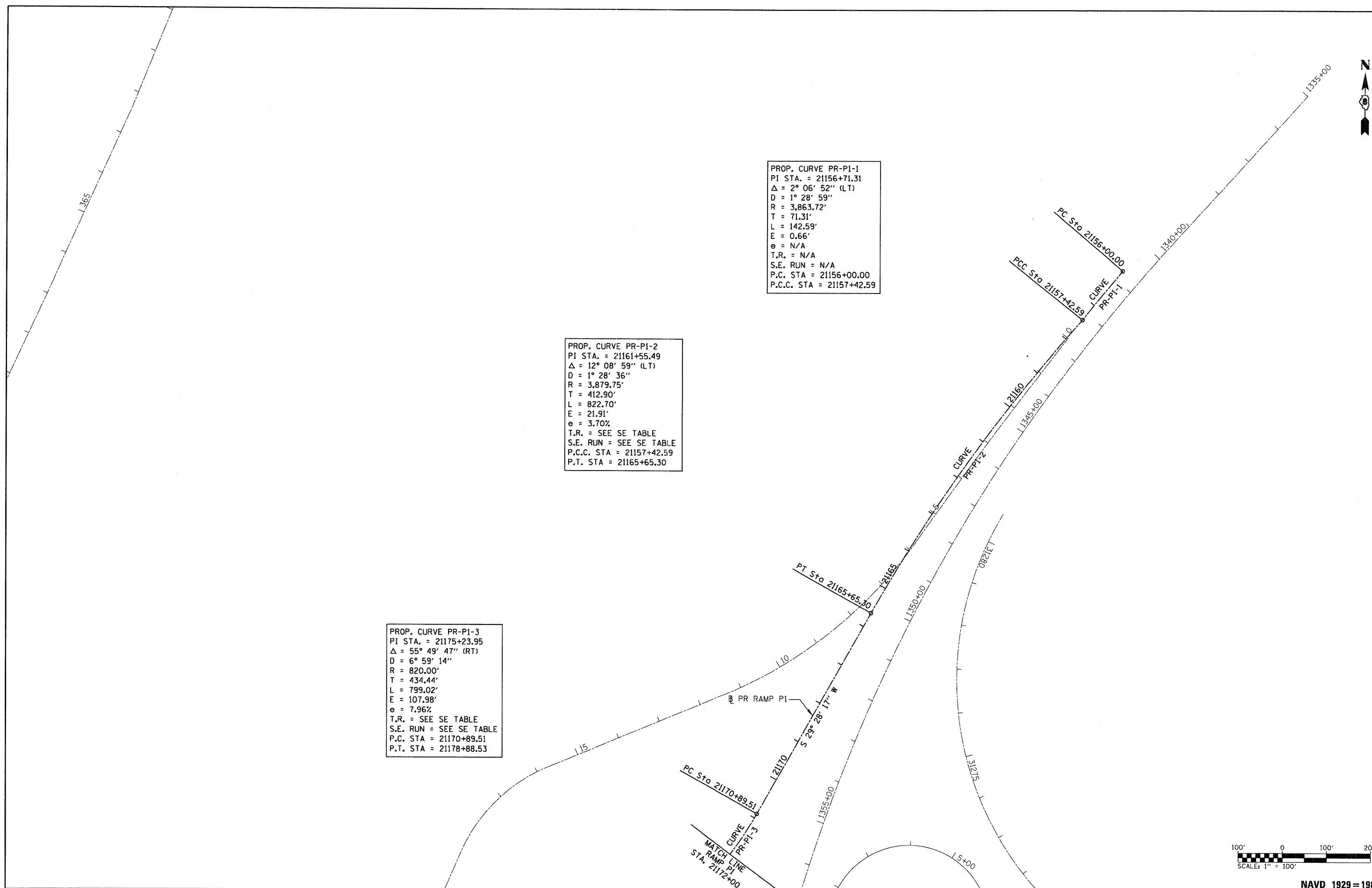





PROP. CURVE PR-P1-1
 PI STA. = 21156+71.31
 $\Delta = 2^\circ 06' 52''$ (LT)
 $D = 1^\circ 28' 59''$
 $R = 3,863.72'$
 $T = 71.31'$
 $L = 142.59'$
 $E = 0.66'$
 $e = N/A$
 $T.R. = N/A$
 $S.E. RUN = N/A$
 $P.C. STA = 21156+00.00$
 $P.C.C. STA = 21157+42.59$

PROP. CURVE PR-P1-2
 PI STA. = 21161+55.49
 $\Delta = 12^\circ 08' 59''$ (LT)
 $D = 1^\circ 28' 36''$
 $R = 3,879.75'$
 $T = 412.90'$
 $L = 822.70'$
 $E = 21.91'$
 $e = 3.70\%$
 $T.R. = \text{SEE SE TABLE}$
 $S.E. RUN = \text{SEE SE TABLE}$
 $P.C.C. STA = 21157+42.59$
 $P.T. STA = 21165+65.30$

PROP. CURVE PR-P1-3
 PI STA. = 21175+23.95
 $\Delta = 55^\circ 49' 47''$ (RT)
 $D = 6^\circ 59' 14''$
 $R = 820.00'$
 $T = 434.44'$
 $L = 799.02'$
 $E = 107.98'$
 $e = 7.96\%$
 $T.R. = \text{SEE SE TABLE}$
 $S.E. RUN = \text{SEE SE TABLE}$
 $P.C. STA = 21170+89.51$
 $P.T. STA = 21178+88.53$



FILE NAME = DB76A91-Sh1-ATB05.dgn 	USER NAME = mmcoachie	DESIGNED - CLS	REVISED -	STATE OF ILLINOIS DEPARTMENT OF TRANSPORTATION	ALIGNMENTS AND TIES	F.A.I. RTE. = 270	SECTION = 60-IB-1	COUNTY = MADISON	TOTAL SHEETS = 712	SHEET NO. = 32
	PLOT SCALE = 100.0000' / IN.	CHECKED - CLS	REVISED -			SCALE: 1" = 100'	SHEET NO. 5 OF 10 SHEETS	STA. 21156+00 TO STA. 21172+00	CONTRACT NO. 76A91	
PLOT DATE = 3/15/2011	DATE = 3/18/2011	REVISED -	NAVD 1929 = 1983							