


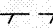



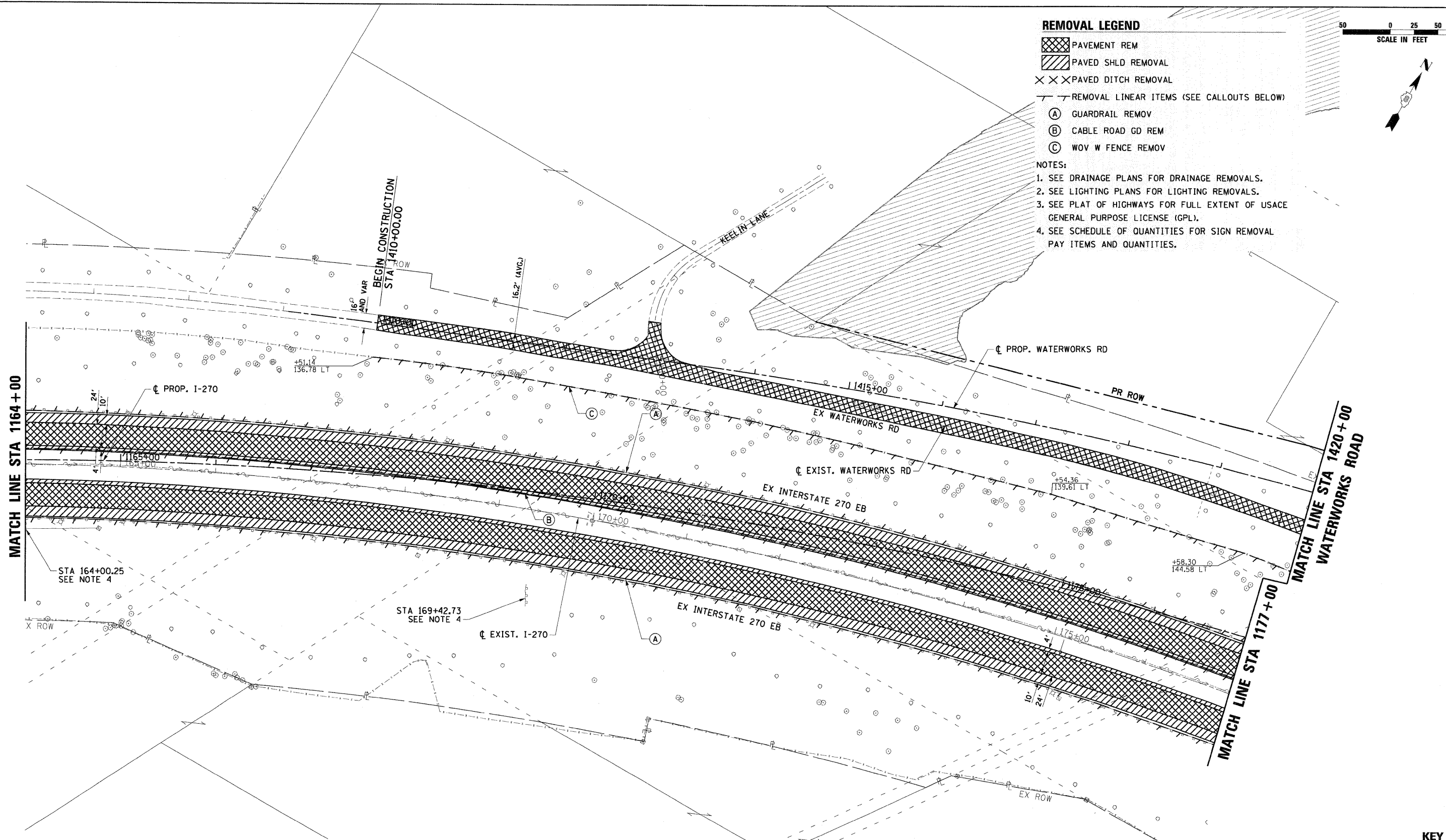
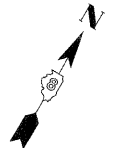


**REMOVAL LEGEND**

-  PAVEMENT REM
-  PAVED SHLD REMOVAL
-  PAVED DITCH REMOVAL
-  REMOVAL LINEAR ITEMS (SEE CALLOUTS BELOW)
-  GUARDRAIL REMOV
-  CABLE ROAD GD REM
-  WOV W FENCE REMOV

**NOTES:**

1. SEE DRAINAGE PLANS FOR DRAINAGE REMOVALS.
2. SEE LIGHTING PLANS FOR LIGHTING REMOVALS.
3. SEE PLAT OF HIGHWAYS FOR FULL EXTENT OF USACE GENERAL PURPOSE LICENSE (GPL).
4. SEE SCHEDULE OF QUANTITIES FOR SIGN REMOVAL PAY ITEMS AND QUANTITIES.

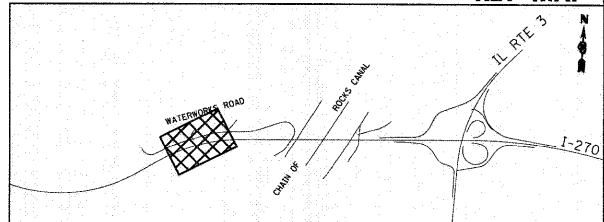


MATCH LINE STA 1164+00

MATCH LINE STA 1420+00  
WATERWORKS ROAD

MATCH LINE STA 1177+00

**KEY MAP**



FILE NAME = 0876A91-Sh1-Rem2.dgn	USER NAME = molopez	DESIGNED - SJM	REVISED - 01-04-11	<b>STATE OF ILLINOIS DEPARTMENT OF TRANSPORTATION</b>	<b>REMOVAL PLANS INTERSTATE 270</b>	F.A.I. RTE. 270	SECTION 60-IB-1	COUNTY MADISON	TOTAL SHEETS 712	SHEET NO. 39	
PLOT SCALE = #SCALE#		DRAWN - ML	REVISED -		SCALE: 1" = 50'	SHEET NO. 2 OF 12 SHEETS	STA. 1164+00 TO STA. 1177+00		CONTRACT NO. 76A91		
PLOT DATE = 3/16/2011		CHECKED - SJM	REVISED -		ILLINOIS FED. AID PROJECT						
		DATE - 06-30-10	REVISED -								