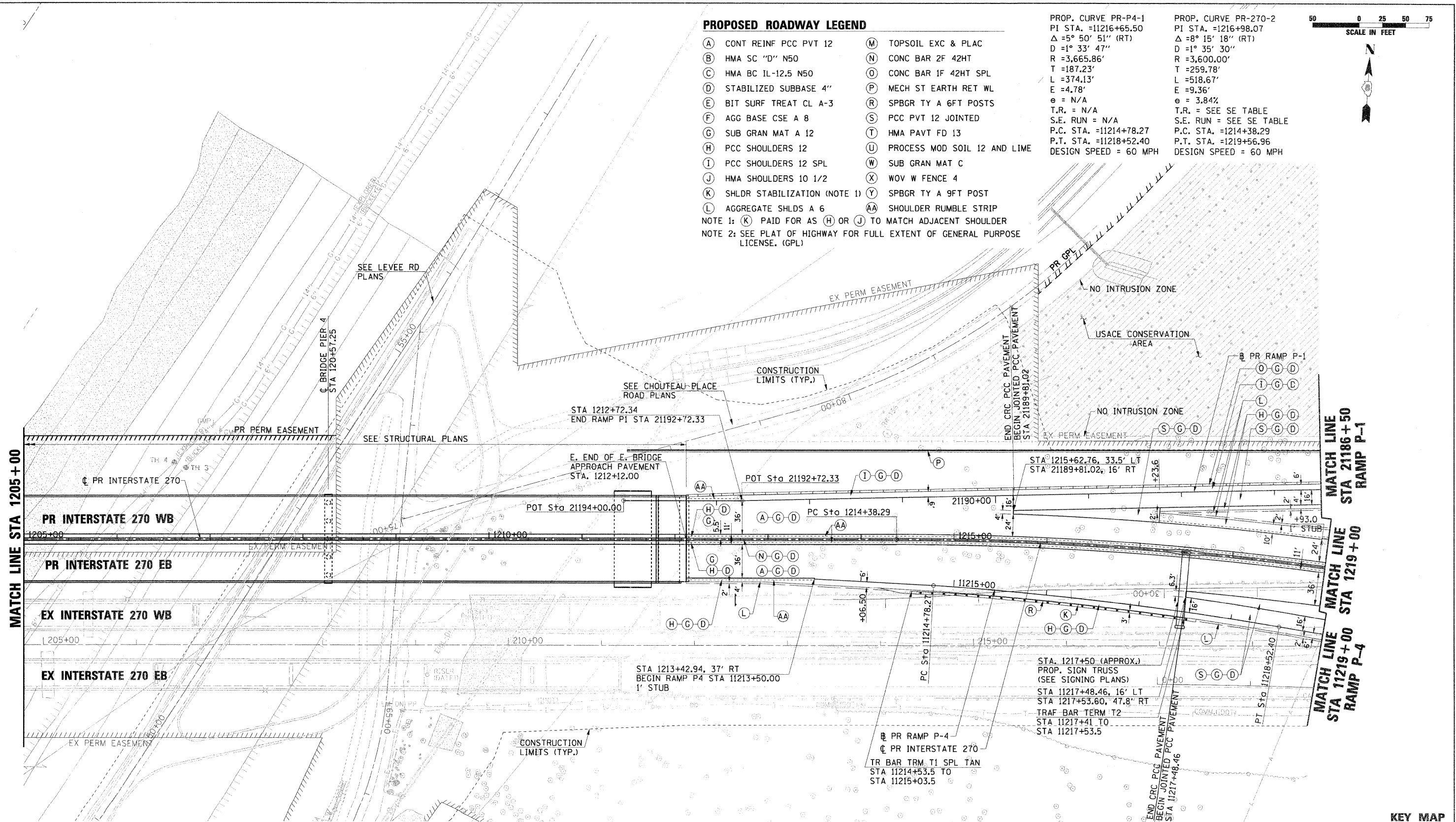


PROPOSED ROADWAY LEGEND

- (A) CONT REINF PCC PVT 12
 - (B) HMA SC "D" N50
 - (C) HMA BC IL-12.5 N50
 - (D) STABILIZED SUBBASE 4"
 - (E) BIT SURF TREAT CL A-3
 - (F) AGG BASE CSE A 8
 - (G) SUB GRAN MAT A 12
 - (H) PCC SHOULDERS 12
 - (I) PCC SHOULDERS 12 SPL
 - (J) HMA SHOULDERS 10 1/2
 - (K) SHLDR STABILIZATION (NOTE 1)
 - (L) AGGREGATE SHLDS A 6
 - (M) TOPSOIL EXC & PLAC
 - (N) CONC BAR 2F 42HT
 - (O) CONC BAR 1F 42HT SPL
 - (P) MECH ST EARTH RET WL
 - (R) SPBGR TY A 6FT POSTS
 - (S) PCC PVT 12 JOINTED
 - (T) HMA PAVT FD 13
 - (U) PROCESS MOD SOIL 12 AND LIME
 - (W) SUB GRAN MAT C
 - (X) WOV W FENCE 4
 - (Y) SPBGR TY A 9FT POST
 - (AA) SHOULDER RUMBLE STRIP
- NOTE 1: (K) PAID FOR AS (H) OR (J) TO MATCH ADJACENT SHOULDER
 NOTE 2: SEE PLAT OF HIGHWAY FOR FULL EXTENT OF GENERAL PURPOSE LICENSE. (GPL)

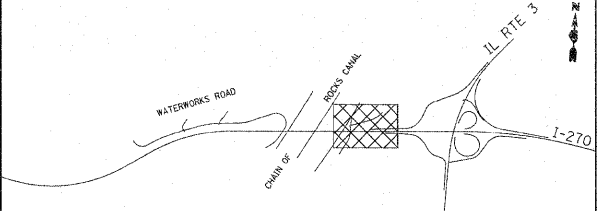
PROP. CURVE PR-P4-1
 PI STA. =11216+65.50
 $\Delta = 5^\circ 50' 51''$ (RT)
 $D = 1^\circ 33' 47''$
 $R = 3,665.86'$
 $T = 187.23'$
 $L = 374.13'$
 $E = 4.78'$
 $e = N/A$
 $T.R. = N/A$
 $S.E. RUN = N/A$
 P.C. STA. =11214+78.27
 P.T. STA. =11218+52.40
 DESIGN SPEED = 60 MPH

PROP. CURVE PR-270-2
 PI STA. =1216+98.07
 $\Delta = 8^\circ 15' 18''$ (RT)
 $D = 1^\circ 35' 30''$
 $R = 3,600.00'$
 $T = 259.78'$
 $L = 518.67'$
 $E = 9.36'$
 $e = 3.84\%$
 $T.R. =$ SEE SE TABLE
 $S.E. RUN =$ SEE SE TABLE
 P.C. STA. =1214+38.29
 P.T. STA. =1219+56.96
 DESIGN SPEED = 60 MPH



MATCH LINE STA 1205+00
 MATCH LINE STA 21186+50 RAMP P-1
 MATCH LINE STA 1219+00
 MATCH LINE STA 11219+00 RAMP P-4

KEY MAP



FILE NAME = 0876A91-Sht-P1m05.dgn	USER NAME = sbliven	DESIGNED - SJM	REVISED - 01-04-11	STATE OF ILLINOIS DEPARTMENT OF TRANSPORTATION	PROPOSED PLAN INTERSTATE 270	F.A.I. RTE. 270	SECTION 60-1B-1	COUNTY MADISON	TOTAL SHEETS 712	SHEET NO. 54	
PLOT SCALE = #SCALE#	CHECKED - SJM	REVISED - 4-20-11	SCALE: 1" = 50'			SHEET NO. 5 OF 12 SHEETS	STA. 1205+00 TO STA. 1219+00	CONTRACT NO. 76A91		ILLINOIS FED. AID PROJECT	
PLOT DATE = 4/28/2011	DATE - 06-30-10	REVISED -									