

MOT PAVEMENT MARKING LEGEND

- (A) TEMP PVT MK LINE 4 (SOLID YELLOW)
- (B) TEMP PVT MK LINE 4 (SOLID WHITE)
- (C) TEMP PVT MK LINE 4 (SKIP-DASH, WHITE, 10' DASH, 30' SKIP)
- (D) NOT USED
- (E) TEMP PVT MK LINE 24 (SOLID WHITE)
- (F) TEMP PVT MK LTR & SYM (SOLID WHITE)
- (G) EPOXY PVT MK LINE 4 (SOLID YELLOW)
- (H) EPOXY PVT MK LINE 4 (SOLID WHITE)
- (I) EPOXY PVT MK LINE 4 (SKIP-DASH, WHITE, 10' DASH, 30' SKIP)
- (J) NOT USED
- (K) WET PAVT TAPE T3 4 (SOLID YELLOW)
- (L) WET PAVT TAPE T3 4 (SOLID WHITE)
- (M) WET PAVT TAPE T3 4 (SOLID WHITE) (SKIP-DASH, WHITE, 10' DASH, 30' SKIP)
- (N) WET PAVT TAPE T3 6 (SOLID WHITE)
- (O) WET PAVT TAPE T3 24 (SOLID WHITE)

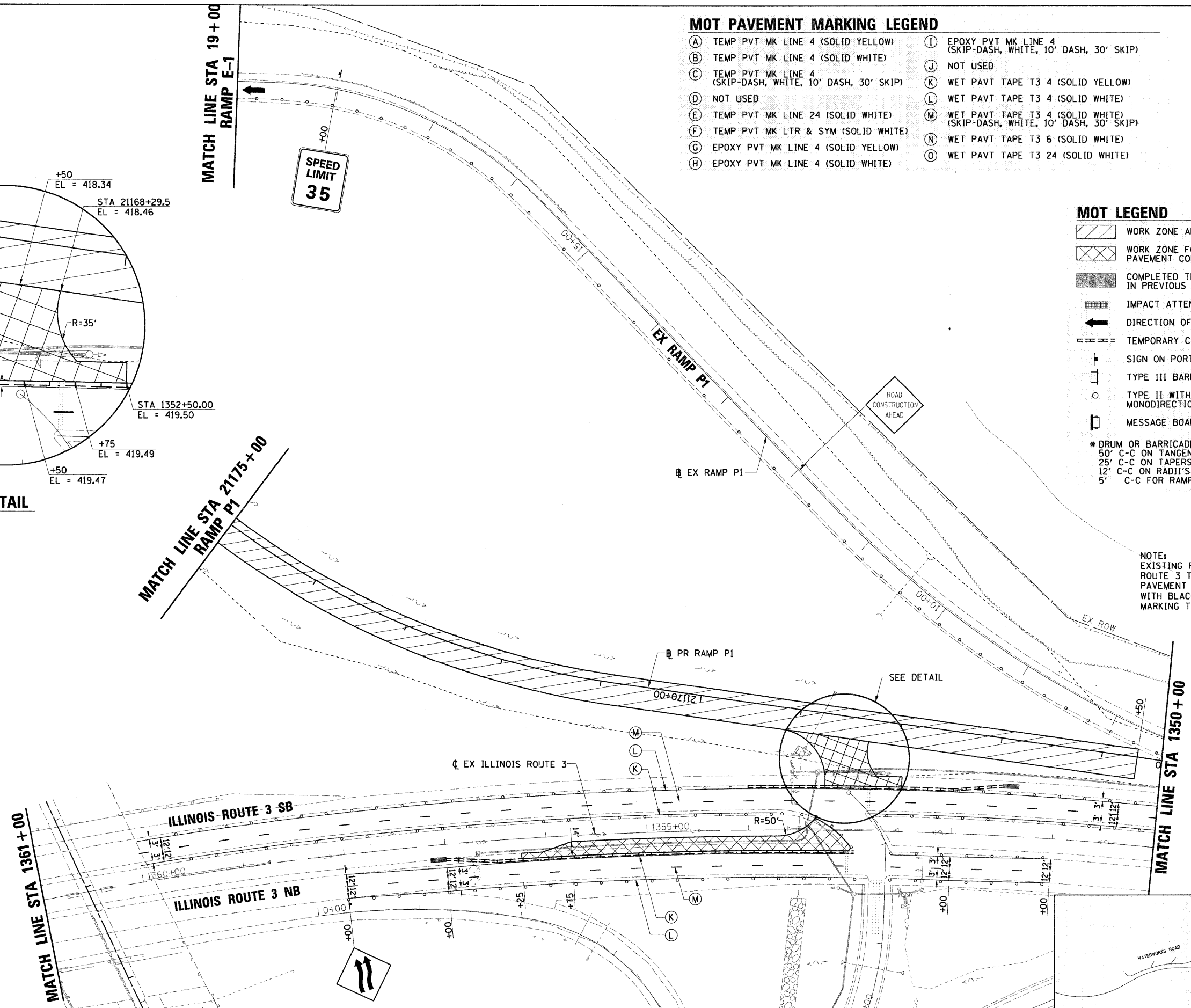
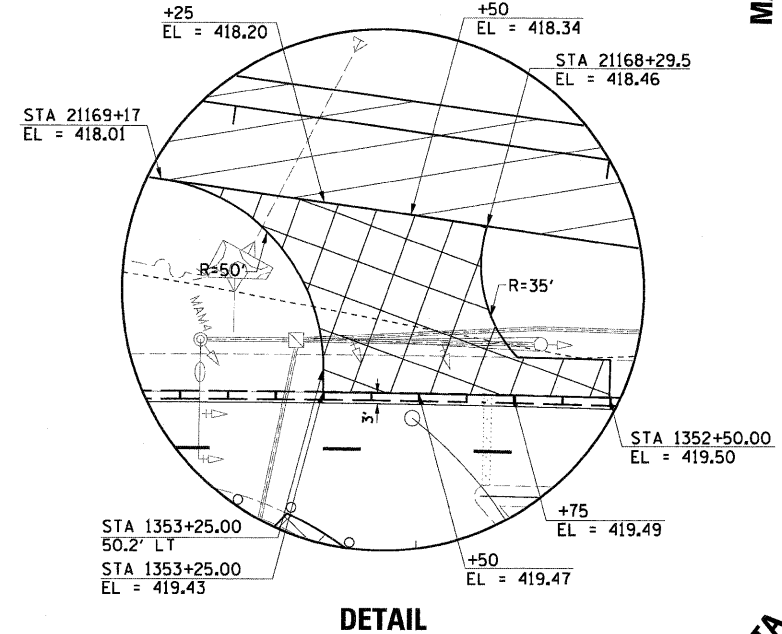


MOT LEGEND

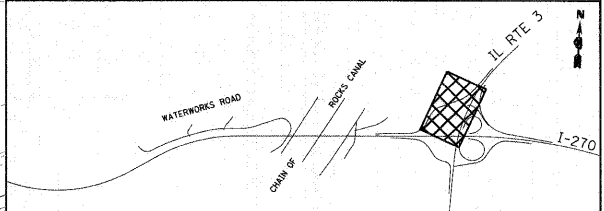
- WORK ZONE AREA
- WORK ZONE FOR TEMPORARY PAVEMENT CONSTRUCTION
- COMPLETED TEMPORARY PAVEMENT IN PREVIOUS STAGES
- IMPACT ATTENUATOR
- DIRECTION OF TRAFFIC
- TEMPORARY CONCRETE BARRIER
- SIGN ON PORTABLE OR PERMANENT SUPPORT
- TYPE III BARRICADES
- TYPE II WITH STEADY BURNING MONODIRECTIONAL LIGHT *
- MESSAGE BOARD

* DRUM OR BARRICADE SPACING:
 50' C-C ON TANGENTS
 25' C-C ON TAPERS OR LANE SHIFTS
 12' C-C ON RADII'S OR RAMPS
 5' C-C FOR RAMP OR ROAD CLOSURES

NOTE:
 EXISTING PAVEMENT MARKINGS ON ILLINOIS ROUTE 3 THAT CONFLICT WITH TEMPORARY PAVEMENT MARKINGS SHALL BE COVERED WITH BLACK WET REFLECTIVE PAVEMENT MARKING TAPE.



KEY MAP



FILE NAME = 0876A91-Sht-MOT102-10.dgn	USER NAME = malopez	DESIGNED - JC	REVISED - 1-01-11	STATE OF ILLINOIS DEPARTMENT OF TRANSPORTATION	SUGGESTED MAINTENANCE OF TRAFFIC STAGE 2 ILLINOIS ROUTE 3	F.A.I. RTE. 270	SECTION 60-1B-1	COUNTY MADISON	TOTAL SHEETS 712	SHEET NO. 134	
PLOT SCALE = #SCALE#	DRAWN - BH	CHECKED - SJM	REVISED -		SCALE: 1" = 50'	SHEET NO. 10 OF 12 SHEETS	STA. 1361+00	TO STA. 1349+90	CONTRACT NO. 76A91		
PLOT DATE = 3/16/2011	DATE - 06-30-10	REVISED -	REVISED -		ILLINOIS FED. AID PROJECT						