

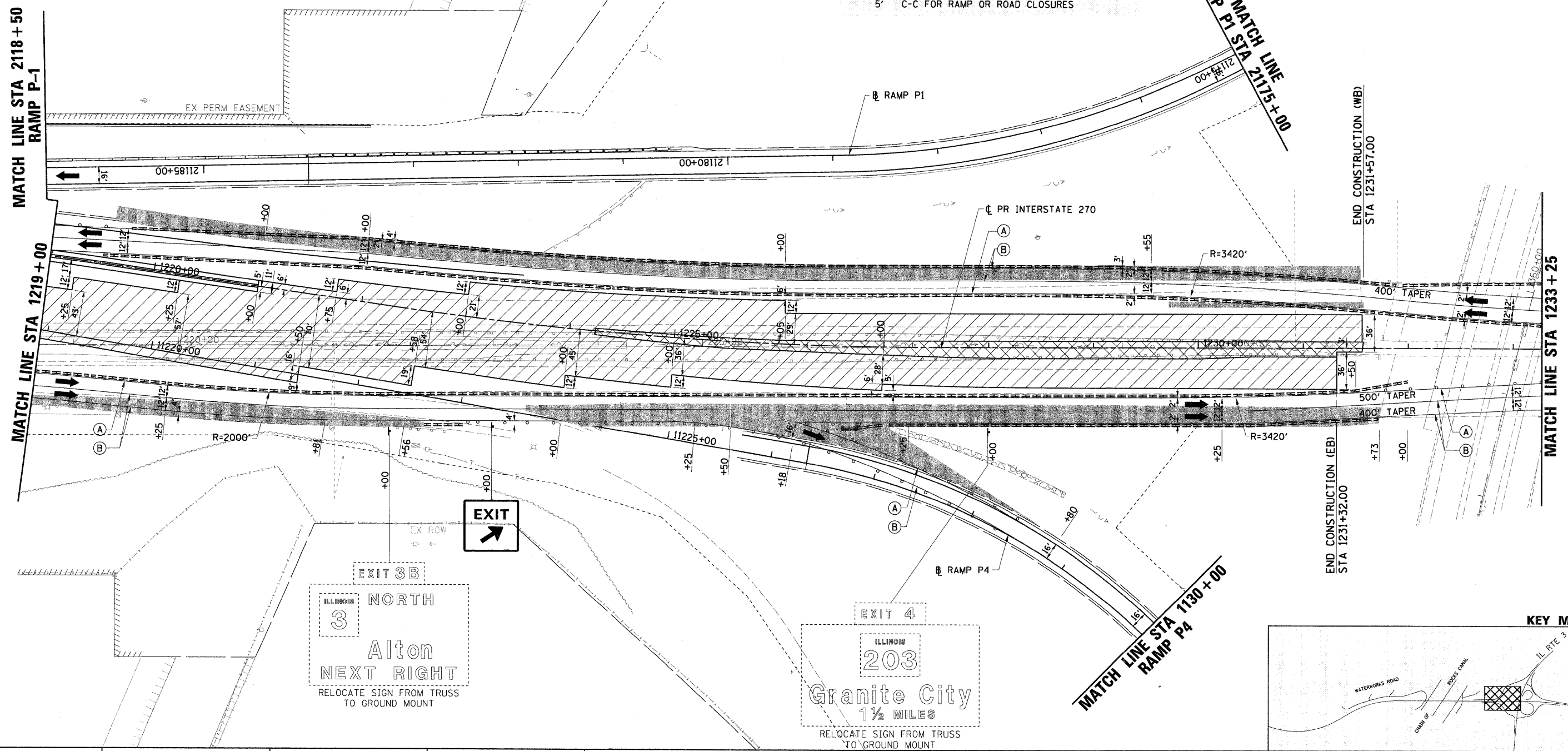
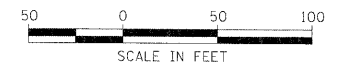
MOT PAVEMENT MARKING LEGEND

- (A) TEMP PVT MK LINE 4 (SOLID YELLOW)
- (B) TEMP PVT MK LINE 4 (SOLID WHITE)
- (C) TEMP PVT MK LINE 4 (SKIP-DASH, WHITE, 10' DASH, 30' SKIP)
- (D) NOT USED
- (E) TEMP PVT MK LINE 24 (SOLID WHITE)
- (F) TEMP PVT MK LTR & SYM (SOLID WHITE)
- (G) EPOXY PVT MK LINE 4 (SOLID YELLOW)
- (H) EPOXY PVT MK LINE 4 (SOLID WHITE)
- (I) EPOXY PVT MK LINE 4 (SKIP-DASH, WHITE, 10' DASH, 30' SKIP)
- (J) NOT USED
- (K) WET PAVT TAPE T3 4 (SOLID YELLOW)
- (L) WET PAVT TAPE T3 4 (SOLID WHITE)
- (M) WET PAVT TAPE T3 4 (SOLID WHITE) (SKIP-DASH, WHITE, 10' DASH, 30' SKIP)
- (N) WET PAVT TAPE T3 6 (SOLID WHITE)
- (O) WET PAVT TAPE T3 24 (SOLID WHITE)

MOT LEGEND

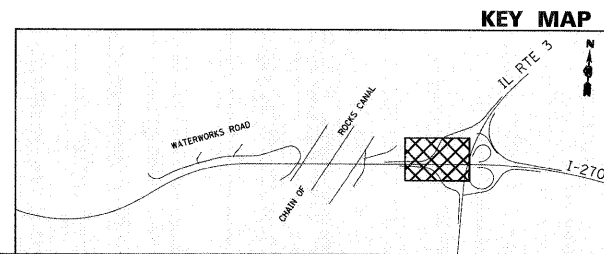
- [Hatched Box] WORK ZONE AREA
- [Cross-hatched Box] WORK ZONE FOR TEMPORARY PAVEMENT CONSTRUCTION
- [Stippled Box] COMPLETED TEMPORARY PAVEMENT IN PREVIOUS STAGES
- [Rectangular Box] IMPACT ATTENUATOR
- [Arrow] DIRECTION OF TRAFFIC
- [Dashed Line] TEMPORARY CONCRETE BARRIER
- [T-shaped Symbol] SIGN ON PORTABLE OR PERMANENT SUPPORT
- [Vertical Line with Top Bar] TYPE III BARRICADES
- [Circle with Center Dot] TYPE II WITH STEADY BURNING MONODIRECTIONAL LIGHT *
- [Rectangular Box] MESSAGE BOARD

* DRUM OR BARRICADE SPACING:
 50' C-C ON TANGENTS
 25' C-C ON TAPERS OR LANE SHIFTS
 12' C-C ON RADII'S OR RAMPS
 5' C-C FOR RAMP OR ROAD CLOSURES



ILLINOIS
 3
 NORTH
 Aiton
 NEXT RIGHT
 RELOCATE SIGN FROM TRUSS TO GROUND MOUNT

ILLINOIS
 203
 Granite City
 1 1/2 MILES
 RELOCATE SIGN FROM TRUSS TO GROUND MOUNT



FILE NAME = DB76A91-Sht-MOT04-07.dgn

USER NAME = malopez
 PLOT SCALE = #SCALE#
 PLOT DATE = 3/18/2011

DESIGNED - JC
 DRAWN - BH
 CHECKED -
 DATE -

REVISED - 1-01-11
 REVISED -
 REVISED -
 REVISED -

STATE OF ILLINOIS
 DEPARTMENT OF TRANSPORTATION

SUGGESTED MAINTENANCE OF TRAFFIC STAGE 4
 INTERSTATE 270

SCALE: 1" = 50' SHEET NO. 7 OF 11 SHEETS STA. TO STA.

F.A.I. RTE.	SECTION	COUNTY	TOTAL SHEETS	SHEET NO.
270	60-1B-1	MADISON	712	165
CONTRACT NO. 76A91				

ILLINOIS FED. AID PROJECT