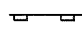

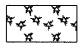

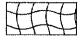
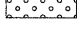
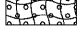
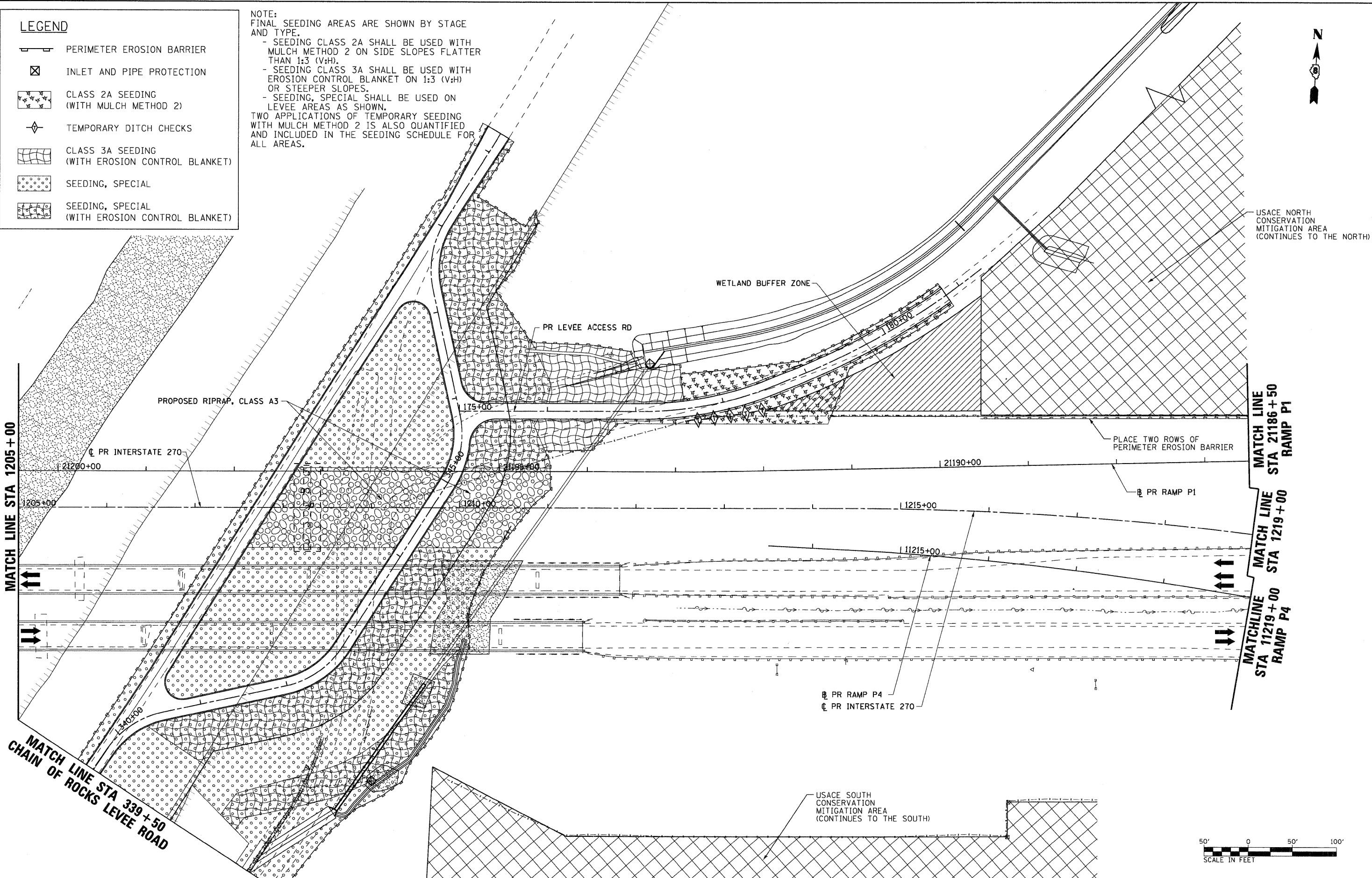


**LEGEND**

-  PERIMETER EROSION BARRIER
-  INLET AND PIPE PROTECTION
-  CLASS 2A SEEDING (WITH MULCH METHOD 2)
-  TEMPORARY DITCH CHECKS
-  CLASS 3A SEEDING (WITH EROSION CONTROL BLANKET)
-  SEEDING, SPECIAL
-  SEEDING, SPECIAL (WITH EROSION CONTROL BLANKET)

NOTE:  
 FINAL SEEDING AREAS ARE SHOWN BY STAGE AND TYPE.  
 - SEEDING CLASS 2A SHALL BE USED WITH MULCH METHOD 2 ON SIDE SLOPES FLATTER THAN 1:3 (V:H).  
 - SEEDING CLASS 3A SHALL BE USED WITH EROSION CONTROL BLANKET ON 1:3 (V:H) OR STEEPER SLOPES.  
 - SEEDING, SPECIAL SHALL BE USED ON LEVEE AREAS AS SHOWN.  
 TWO APPLICATIONS OF TEMPORARY SEEDING WITH MULCH METHOD 2 IS ALSO QUANTIFIED AND INCLUDED IN THE SEEDING SCHEDULE FOR ALL AREAS.



FILE NAME = DB76A91-Sht-Eros-01-05.dgn  
**VOLKERT**

USER NAME = untitled  
 PLOT SCALE = 50.0000' / IN.  
 PLOT DATE = 3/15/2011

DESIGNED - MPW  
 DRAWN - CJS  
 CHECKED - PMK  
 DATE - 3/18/2011

REVISED -  
 REVISED -  
 REVISED -  
 REVISED -

**STATE OF ILLINOIS  
 DEPARTMENT OF TRANSPORTATION**

**EROSION CONTROL PLAN - STAGE 1**

SCALE: 1" = 50' SHEET NO. 5 OF 38 SHEETS STA. 1205+00 TO STA. 1219+00

F.A.I. RTE.	SECTION	COUNTY	TOTAL SHEETS	SHEET NO.
270	60-1B-1	MADISON	712	216
CONTRACT NO. 76A91				
ILLINOIS FED. AID PROJECT				