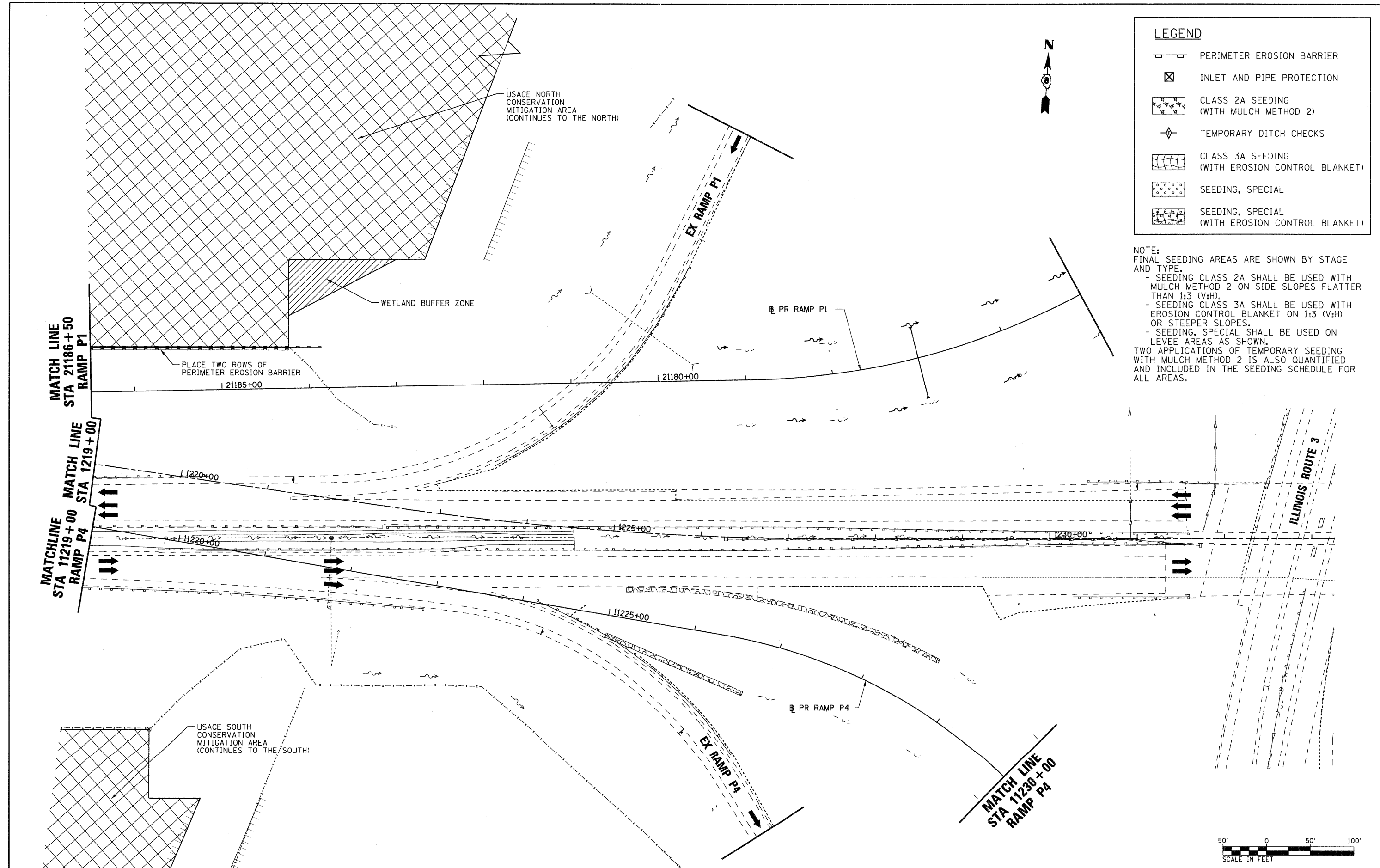




LEGEND	
	PERIMETER EROSION BARRIER
	INLET AND PIPE PROTECTION
	CLASS 2A SEEDING (WITH MULCH METHOD 2)
	TEMPORARY DITCH CHECKS
	CLASS 3A SEEDING (WITH EROSION CONTROL BLANKET)
	SEEDING, SPECIAL
	SEEDING, SPECIAL (WITH EROSION CONTROL BLANKET)

NOTE:  
FINAL SEEDING AREAS ARE SHOWN BY STAGE AND TYPE.  
- SEEDING CLASS 2A SHALL BE USED WITH MULCH METHOD 2 ON SIDE SLOPES FLATTER THAN 1:3 (V:H).  
- SEEDING CLASS 3A SHALL BE USED WITH EROSION CONTROL BLANKET ON 1:3 (V:H) OR STEEPER SLOPES.  
- SEEDING, SPECIAL SHALL BE USED ON LEVEE AREAS AS SHOWN.  
TWO APPLICATIONS OF TEMPORARY SEEDING WITH MULCH METHOD 2 IS ALSO QUANTIFIED AND INCLUDED IN THE SEEDING SCHEDULE FOR ALL AREAS.



FILE NAME = D876A91-Sht-Eros-01-06.dgn	USER NAME = untitled	DESIGNED - MPW	REVISED -	<b>STATE OF ILLINOIS DEPARTMENT OF TRANSPORTATION</b>	<b>EROSION CONTROL PLAN - STAGE 1</b>	F.A.I. RTE. 270	SECTION 60-18-1	COUNTY MADISON	TOTAL SHEETS 712	SHEET NO. 217	
<b>VOLKERT</b>	PLOT SCALE = 50.0000' / IN.	DRAWN - CJS	REVISED -			SCALE: 1" = 50'	SHEET NO. 6 OF 38 SHEETS	STA. 1219+00	TO STA. 1233+00	CONTRACT NO. 76A91	
	PLOT DATE = 3/15/2011	CHECKED - PMK	REVISED -			ILLINOIS FED. AID PROJECT					
		DATE - 3/18/2011	REVISED -								