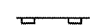



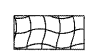


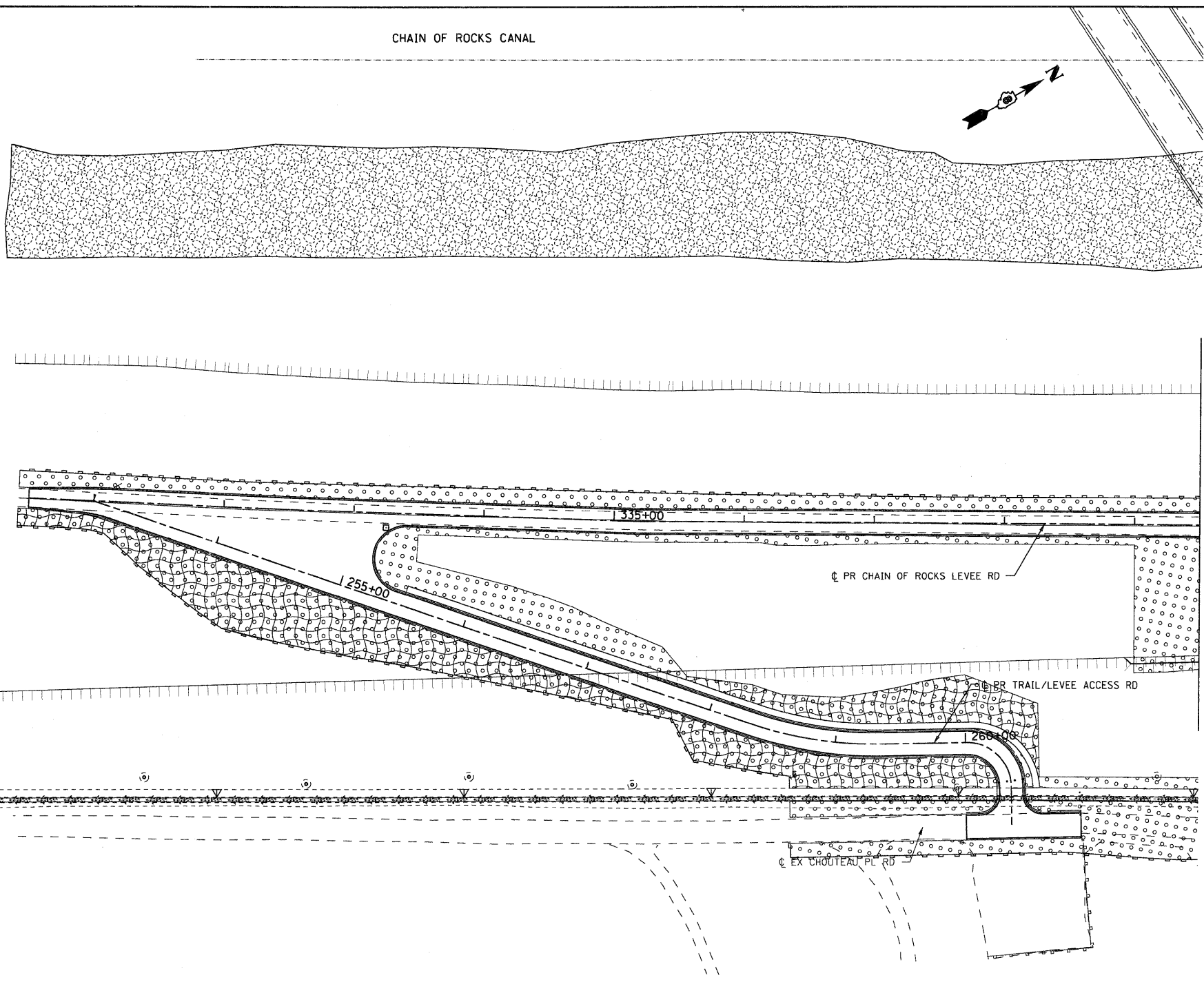


**LEGEND**

-  PERIMETER EROSION BARRIER
-  INLET AND PIPE PROTECTION
-  CLASS 2A SEEDING  
(WITH MULCH METHOD 2)
-  TEMPORARY DITCH CHECKS
-  CLASS 3A SEEDING  
(WITH EROSION CONTROL BLANKET)
-  SEEDING, SPECIAL
-  SEEDING, SPECIAL  
(WITH EROSION CONTROL BLANKET)

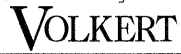
NOTE:  
FINAL SEEDING AREAS ARE SHOWN BY STAGE AND TYPE.  
- SEEDING CLASS 2A SHALL BE USED WITH MULCH METHOD 2 ON SIDE SLOPES FLATTER THAN 1:3 (V:H).  
- SEEDING CLASS 3A SHALL BE USED WITH EROSION CONTROL BLANKET ON 1:3 (V:H) OR STEEPER SLOPES.  
- SEEDING, SPECIAL SHALL BE USED ON LEVEE AREAS AS SHOWN.  
TWO APPLICATIONS OF TEMPORARY SEEDING WITH MULCH METHOD 2 IS ALSO QUANTIFIED AND INCLUDED IN THE SEEDING SCHEDULE FOR ALL AREAS.



MATCH LINE STA 339+50  
CHAIN OF ROCKS LEVEE ROAD

USACE SOUTH CONSERVATION MITIGATION AREA



FILE NAME = D876A91-Sht-Eros-01-10.dgn	USER NAME = untitled	DESIGNED - MPW	REVISED -	<b>STATE OF ILLINOIS DEPARTMENT OF TRANSPORTATION</b>	<b>EROSION CONTROL PLAN - STAGE 1</b>			F.A.I. RTE. 270	SECTION 60-1B-1	COUNTY MADISON	TOTAL SHEETS 712	SHEET NO. 219
	PLOT SCALE = 50.0000' / IN.	DRAWN - CJS	REVISED -		SCALE: 1" = 50'	SHEET NO. 8 OF 38 SHEETS	STA. N/A	TO STA. N/A	CONTRACT NO. 76A91		ILLINOIS FED. AID PROJECT	
	PLOT DATE = 3/15/2011	CHECKED - PMK	REVISED -									
		DATE - 3/18/2011	REVISED -									