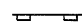






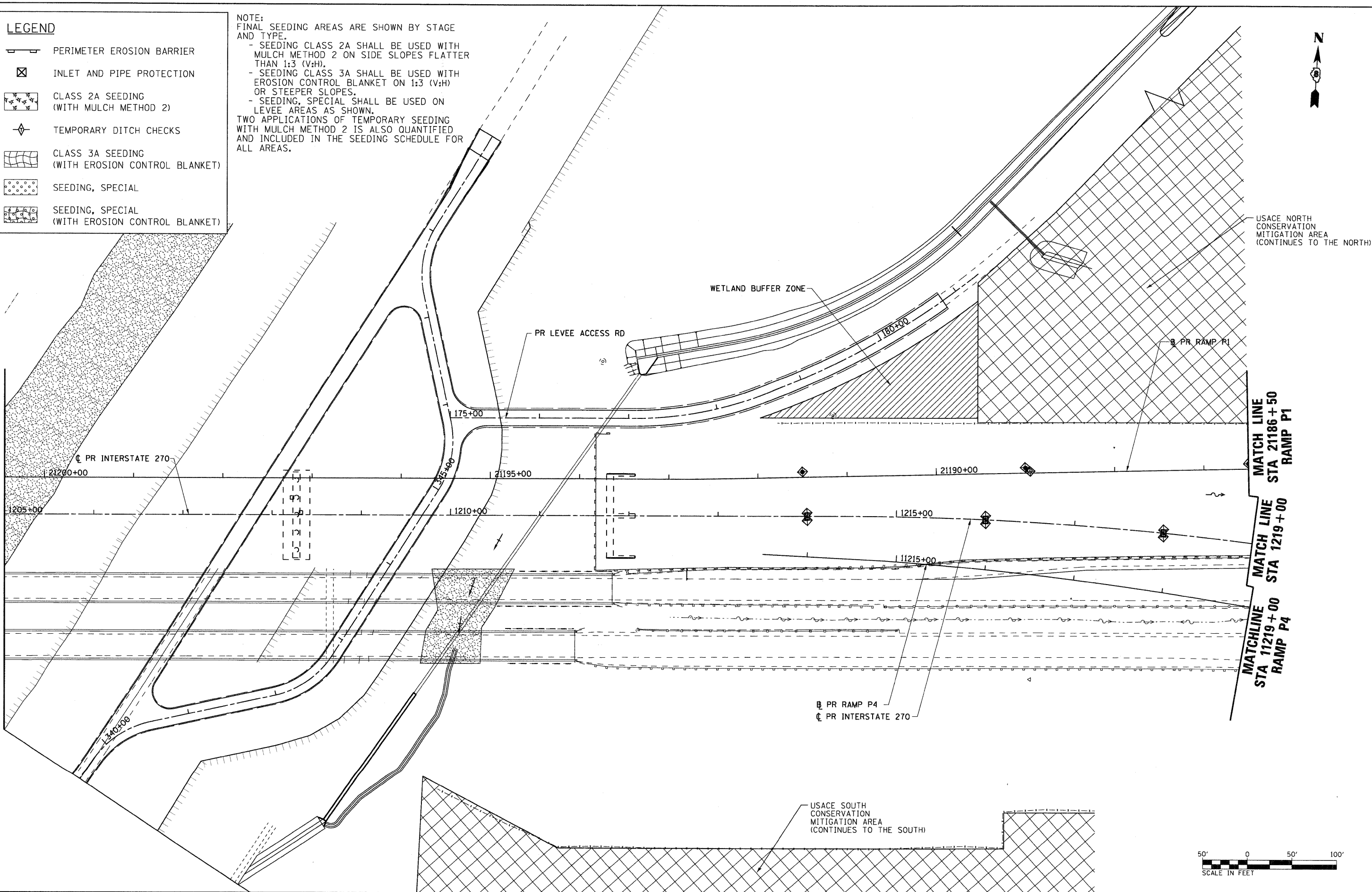



LEGEND

-  PERIMETER EROSION BARRIER
-  INLET AND PIPE PROTECTION
-  CLASS 2A SEEDING
(WITH MULCH METHOD 2)
-  TEMPORARY DITCH CHECKS
-  CLASS 3A SEEDING
(WITH EROSION CONTROL BLANKET)
-  SEEDING, SPECIAL
-  SEEDING, SPECIAL
(WITH EROSION CONTROL BLANKET)

NOTE:
FINAL SEEDING AREAS ARE SHOWN BY STAGE AND TYPE.
- SEEDING CLASS 2A SHALL BE USED WITH MULCH METHOD 2 ON SIDE SLOPES FLATTER THAN 1:3 (V:H).
- SEEDING CLASS 3A SHALL BE USED WITH EROSION CONTROL BLANKET ON 1:3 (V:H) OR STEEPER SLOPES.
- SEEDING, SPECIAL SHALL BE USED ON LEVEE AREAS AS SHOWN.
TWO APPLICATIONS OF TEMPORARY SEEDING WITH MULCH METHOD 2 IS ALSO QUANTIFIED AND INCLUDED IN THE SEEDING SCHEDULE FOR ALL AREAS.



FILE NAME = D876A91-Sh1-Er-os-02-05.dgn	USER NAME = untitled	DESIGNED - MPW	REVISED -	STATE OF ILLINOIS DEPARTMENT OF TRANSPORTATION	EROSION CONTROL PLAN - STAGE 2	F.A.I. RTE. 270	SECTION 60-1B-1	COUNTY MADISON	TOTAL SHEETS 712	SHEET NO. 223		
	PLOT SCALE = 50.0000' / IN.	DRAWN - CJS	REVISED -			SCALE: 1" = 50'	SHEET NO. 12 OF 38 SHEETS	STA. 1205+00	TO STA. 1219+00	CONTRACT NO. 76A91		
	PLOT DATE = 3/15/2011	CHECKED - PMK	REVISED -			ILLINOIS FED. AID PROJECT						
		DATE - 3/18/2011	REVISED -									