

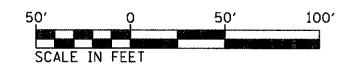
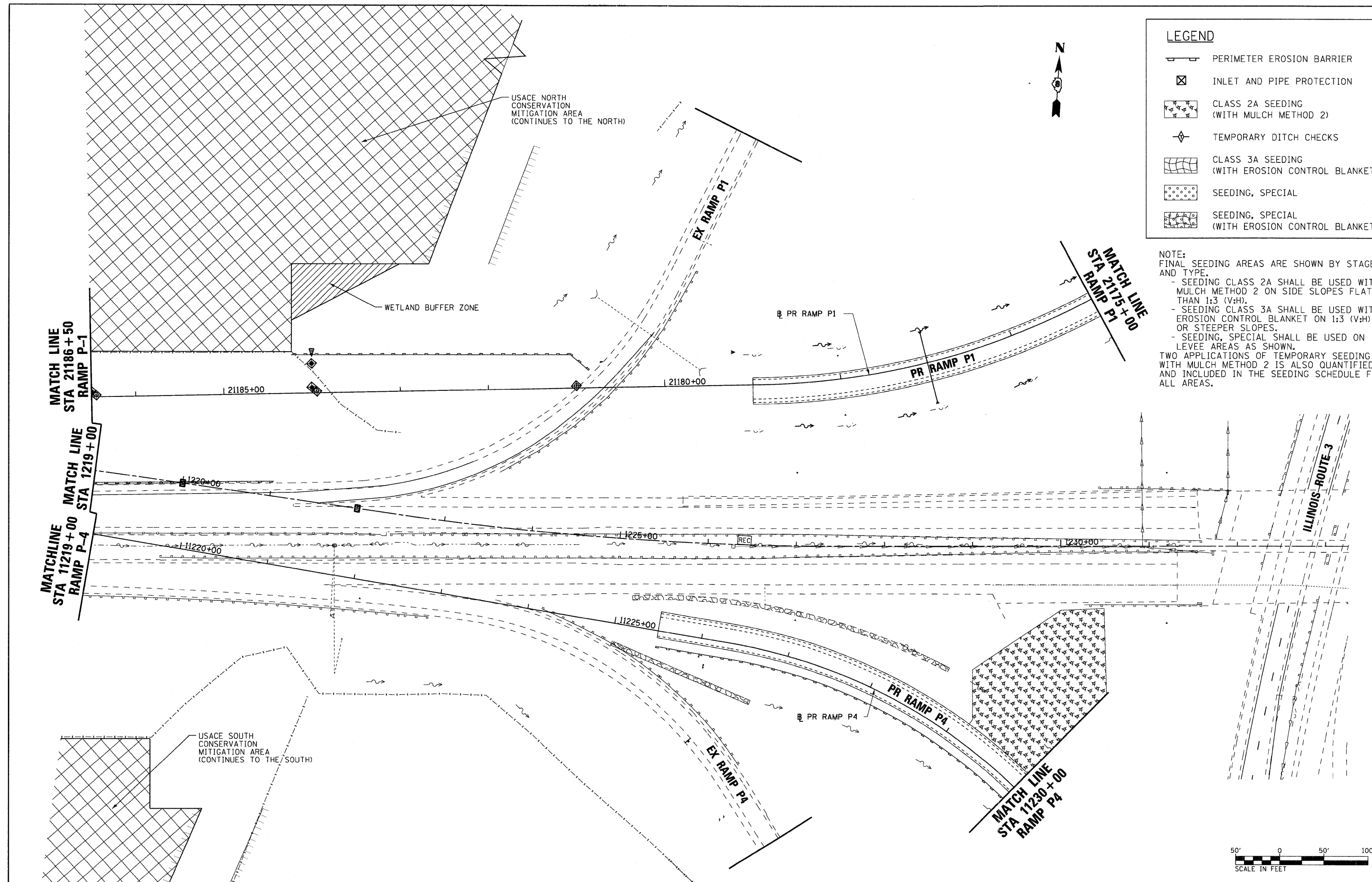


LEGEND	
	PERIMETER EROSION BARRIER
	INLET AND PIPE PROTECTION
	CLASS 2A SEEDING (WITH MULCH METHOD 2)
	TEMPORARY DITCH CHECKS
	CLASS 3A SEEDING (WITH EROSION CONTROL BLANKET)
	SEEDING, SPECIAL
	SEEDING, SPECIAL (WITH EROSION CONTROL BLANKET)

NOTE:
FINAL SEEDING AREAS ARE SHOWN BY STAGE AND TYPE.

- SEEDING CLASS 2A SHALL BE USED WITH MULCH METHOD 2 ON SIDE SLOPES FLATTER THAN 1:3 (V:H).
- SEEDING CLASS 3A SHALL BE USED WITH EROSION CONTROL BLANKET ON 1:3 (V:H) OR STEEPER SLOPES.
- SEEDING, SPECIAL SHALL BE USED ON LEVEE AREAS AS SHOWN.

TWO APPLICATIONS OF TEMPORARY SEEDING WITH MULCH METHOD 2 IS ALSO QUANTIFIED AND INCLUDED IN THE SEEDING SCHEDULE FOR ALL AREAS.



FILE NAME = D876A91-Sht-Eros-02-05.dgn
VOLKERT

USER NAME = untitled
PLOT SCALE = 50.0000' / IN.
PLOT DATE = 3/15/2011

DESIGNED - MPW
DRAWN - CJS
CHECKED - PMK
DATE - 3/18/2011

REVISED -
REVISED -
REVISED -
REVISED -

**STATE OF ILLINOIS
DEPARTMENT OF TRANSPORTATION**

EROSION CONTROL PLAN - STAGE 2

SCALE: 1" = 50' SHEET NO. 13 OF 38 SHEETS STA. 1219+00 TO STA. 1233+00

F.A.I. RTE.	SECTION	COUNTY	TOTAL SHEETS	SHEET NO.
270	60-1B-1	MADISON	712	224
				CONTRACT NO. 76A91
ILLINOIS FED. AID PROJECT				