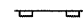
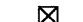
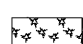

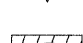
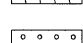
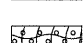


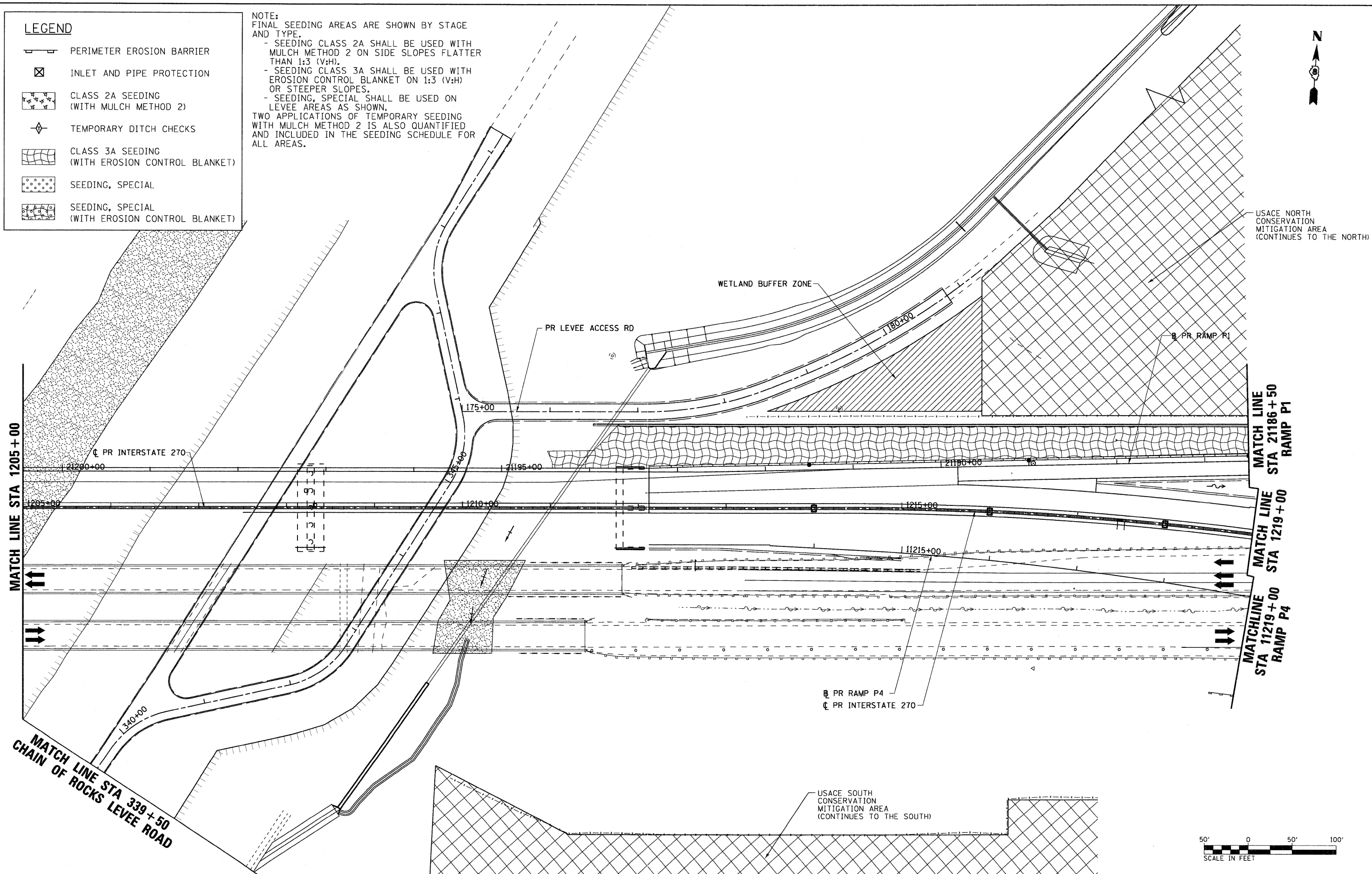
**LEGEND**

-  PERIMETER EROSION BARRIER
-  INLET AND PIPE PROTECTION
-  CLASS 2A SEEDING  
(WITH MULCH METHOD 2)
-  TEMPORARY DITCH CHECKS
-  CLASS 3A SEEDING  
(WITH EROSION CONTROL BLANKET)
-  SEEDING, SPECIAL
-  SEEDING, SPECIAL  
(WITH EROSION CONTROL BLANKET)

NOTE:  
FINAL SEEDING AREAS ARE SHOWN BY STAGE AND TYPE.

- SEEDING CLASS 2A SHALL BE USED WITH MULCH METHOD 2 ON SIDE SLOPES FLATTER THAN 1:3 (V:H).
- SEEDING CLASS 3A SHALL BE USED WITH EROSION CONTROL BLANKET ON 1:3 (V:H) OR STEEPER SLOPES.
- SEEDING, SPECIAL SHALL BE USED ON LEVEE AREAS AS SHOWN.

TWO APPLICATIONS OF TEMPORARY SEEDING WITH MULCH METHOD 2 IS ALSO QUANTIFIED AND INCLUDED IN THE SEEDING SCHEDULE FOR ALL AREAS.



USACE NORTH CONSERVATION MITIGATION AREA (CONTINUES TO THE NORTH)

WETLAND BUFFER ZONE

PR LEVEE ACCESS RD

PR INTERSTATE 270

MATCH LINE STA 21186+50 RAMP P1

MATCH LINE STA 1219+00 RAMP P4

PR RAMP P4  
PR INTERSTATE 270

MATCH LINE STA 339+50 CHAIN OF ROCKS LEVEE ROAD

USACE SOUTH CONSERVATION MITIGATION AREA (CONTINUES TO THE SOUTH)



FILE NAME = DB76A91-Sht-Eros-03-05.dgn	USER NAME = untitled	DESIGNED - MPW	REVISED -	<b>STATE OF ILLINOIS DEPARTMENT OF TRANSPORTATION</b>	<b>EROSION CONTROL PLAN - STAGE 3</b>	F.A.I. RTE. 270	SECTION 60-1B-1	COUNTY MADISON	TOTAL SHEETS 712	SHEET NO. 231		
<b>VOLKERT</b>	PLOT SCALE = 50.0000' / IN.	DRAWN - CJS	REVISED -			SCALE: 1" = 50'	SHEET NO. 20 OF 38 SHEETS	STA. 1205+00	TO STA. 1219+00	CONTRACT NO. 76A91		
	PLOT DATE = 3/15/2011	CHECKED - PMK	REVISED -			ILLINOIS FED. AID PROJECT						
		DATE - 3/18/2011	REVISED -									