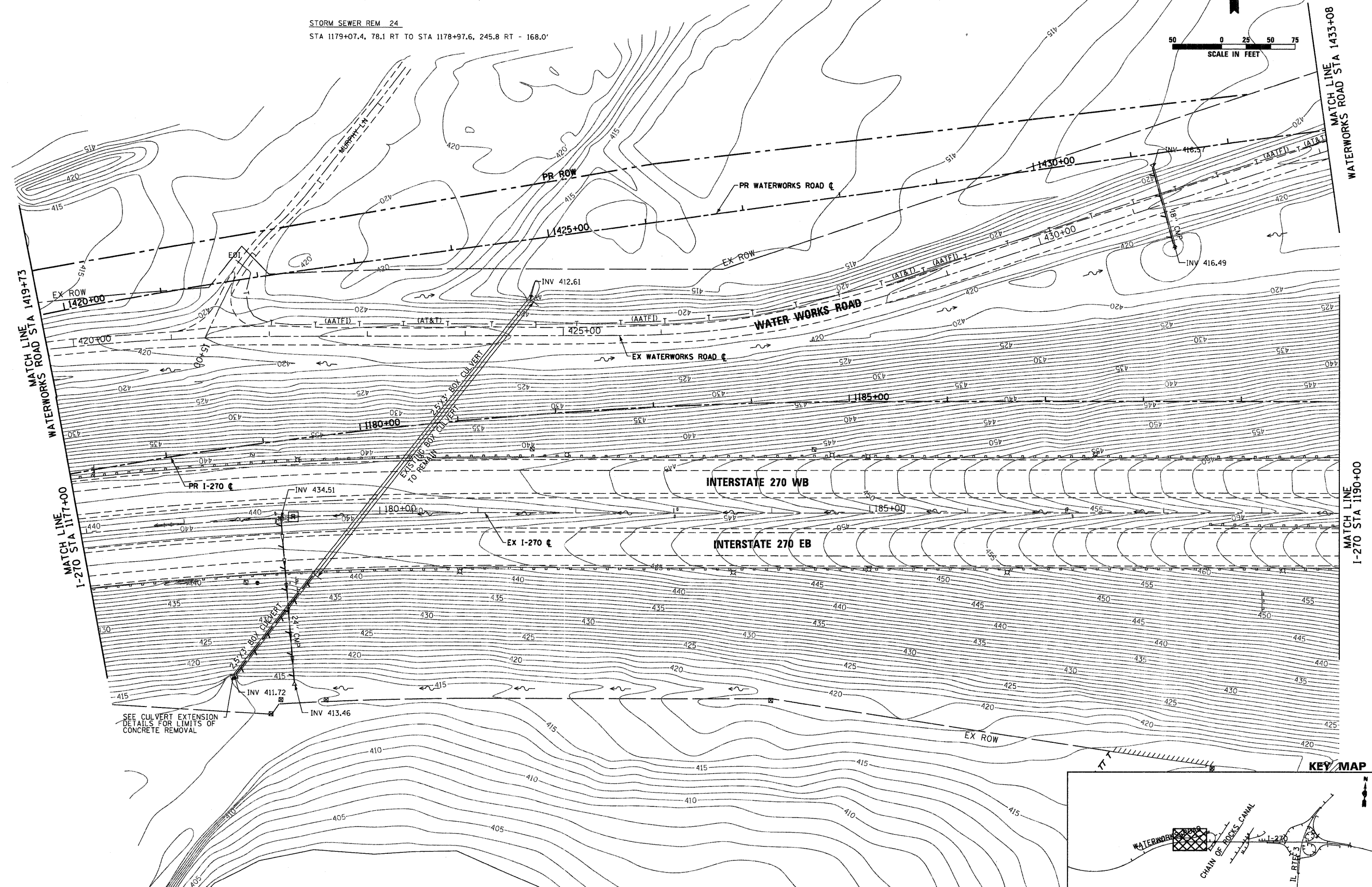
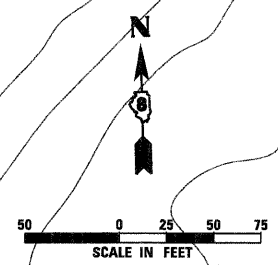


SEE EXISTING DRAINAGE AND UTILITY LEGENDS ON SHEET NO. 1 OF 11

REMOV CATCH BAS  
STA 1179+07.5, 78.0 RT

STORM SEWER REM 18  
STA 1188+09.3, 239.8 LT TO STA 1188+30.6, 161.5 LT - 81.2'

STORM SEWER REM 24  
STA 1179+07.4, 78.1 RT TO STA 1178+97.6, 245.8 RT - 168.0'

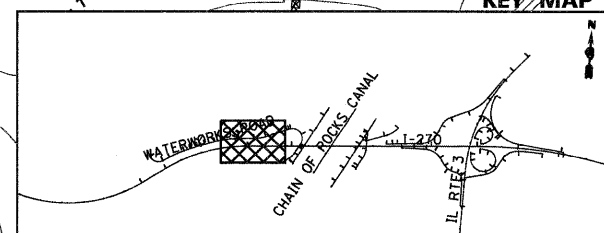


MATCH LINE WATERWORKS ROAD STA 1433+08

MATCH LINE WATERWORKS ROAD STA 1419+73

MATCH LINE I-270 STA 1177+00

MATCH LINE I-270 STA 1190+00



FILE NAME =  
D876A91-Sht-ExD-airin03.dgn

USER NAME = EDean  
PLOT SCALE = 1:50  
PLOT DATE = 3/18/11

DESIGNED - JWM  
DRAWN - JWM  
CHECKED - MBL  
DATE - 3/18/11

REVISED -  
REVISED -  
REVISED -  
REVISED -

STATE OF ILLINOIS  
DEPARTMENT OF TRANSPORTATION

EXISTING DRAINAGE & UTILITIES  
INTERSTATE 270

SCALE: 1" = 50' SHEET NO. 3 OF 11 SHEETS STA. 1177+00 TO STA. 1190+00

F.A.I. RTE.	SECTION	COUNTY	TOTAL SHEETS	SHEET NO.
270	60-1B-1	MADISON	712	252
				CONTRACT NO. 76A91
ILLINOIS FED. AID PROJECT				