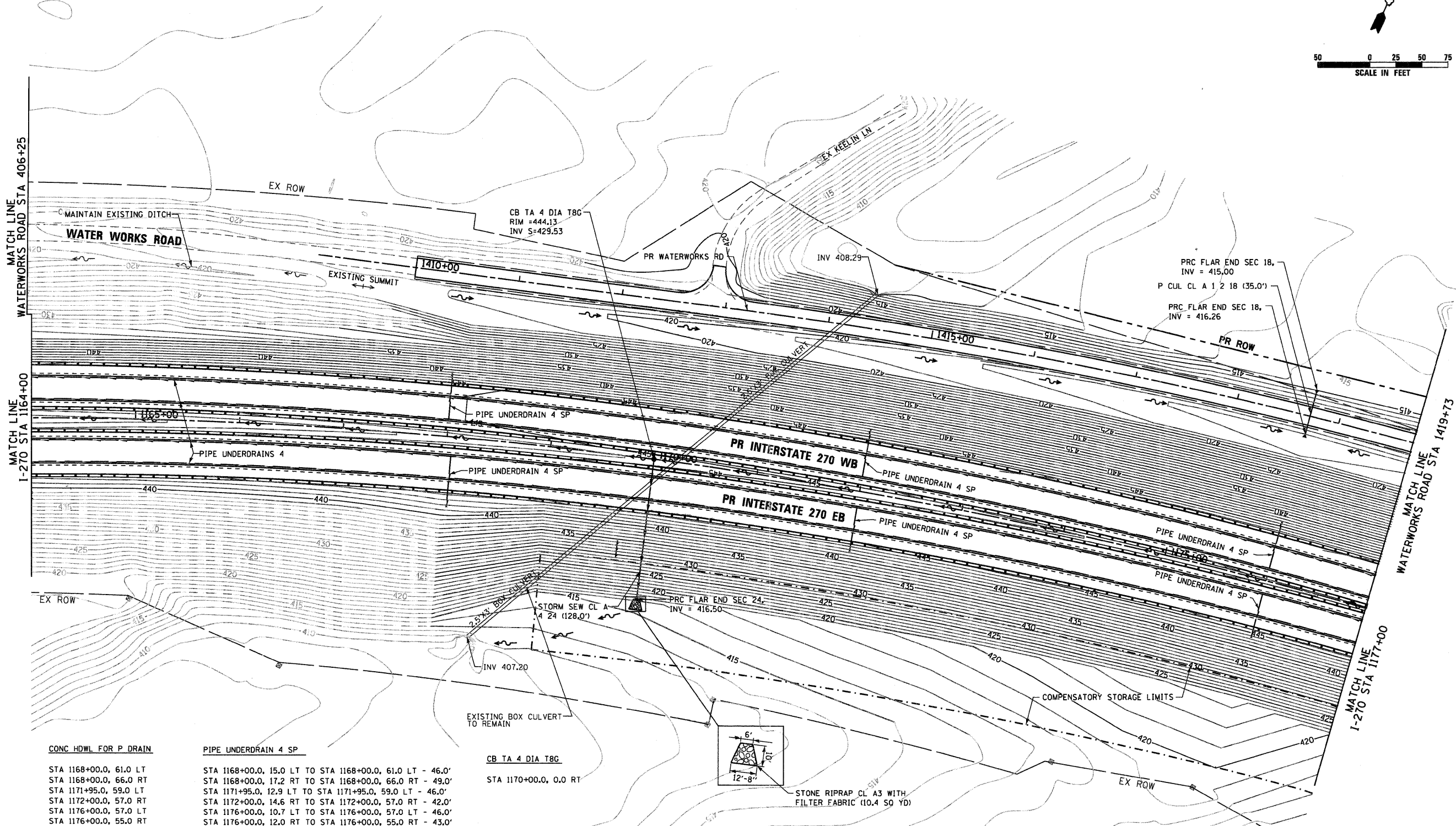
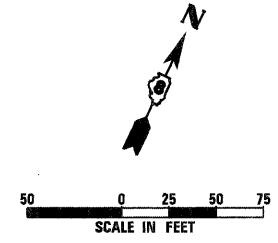
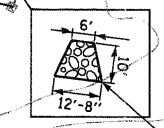


SEE PROPOSED DRAINAGE LEGEND ON SHEET NO. 1 OF 11

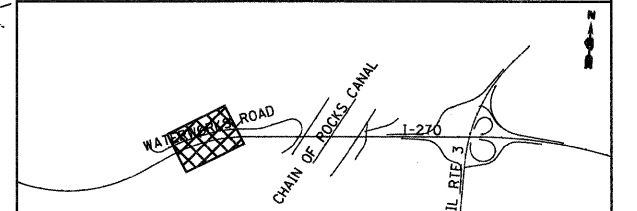


CONC HDWL FOR P DRAIN	PIPE UNDERDRAIN 4 SP
STA 1168+00.0, 61.0 LT STA 1168+00.0, 66.0 RT STA 1171+95.0, 59.0 LT STA 1172+00.0, 57.0 RT STA 1176+00.0, 57.0 RT STA 1176+00.0, 55.0 RT	STA 1168+00.0, 15.0 LT TO STA 1168+00.0, 61.0 LT - 46.0' STA 1168+00.0, 17.2 RT TO STA 1168+00.0, 66.0 RT - 49.0' STA 1171+95.0, 12.9 LT TO STA 1171+95.0, 59.0 LT - 46.0' STA 1172+00.0, 14.6 RT TO STA 1172+00.0, 57.0 RT - 42.0' STA 1176+00.0, 10.7 LT TO STA 1176+00.0, 57.0 LT - 46.0' STA 1176+00.0, 12.0 RT TO STA 1176+00.0, 55.0 RT - 43.0'
PRC FLAR END SEC 18	PIPE UNDERDRAINS 4
STA 1418+71.4, 15.0 RT STA 1418+72.0, 20.0 LT	STA 1164+00.0, 41.1 LT TO STA 1177+00.0, 34.1 LT - 1,310.7' STA 1164+00.0, 17.1 LT TO STA 1177+00.0, 10.1 LT - 1,304.0' STA 1164+00.0, 19.7 RT TO STA 1177+00.0, 11.3 RT - 1,295.7' STA 1164+00.0, 43.7 RT TO STA 1177+00.0, 35.3 RT - 1,289.0'
P CUL CL A 1 18	TRENCH BACKFILL
STA 1418+71.4, 15.0 RT TO STA 1418+72.0, 20.0 LT - 35.0'	[5 CY]

CB TA 4 DIA T8C	PRC FLAR END SEC 24
STA 1170+00.0, 0.0 RT	STA 1170+00.0, 130.0 RT
STORM SEW CL A 4 24	TRENCH BACKFILL
STA 1170+00.0, 0.0 RT TO STA 1170+00.0, 130.0 RT - 128.0'	[135 CY]



KEY MAP



FILE NAME = D876A91-Sht-Pr-D-rin02.dgn	USER NAME = EDean	DESIGNED - JM	REVISED -	STATE OF ILLINOIS DEPARTMENT OF TRANSPORTATION	PROPOSED DRAINAGE PLAN INTERSTATE 270			F.A.I. RTE. = 270	SECTION = 60-1B-1	COUNTY = MADISON	TOTAL SHEETS = 712	SHEET NO. = 262
	PLOT SCALE = 1:50	DRAWN - JM	REVISED -		SCALE: 1" = 50'	SHEET NO. 2 OF 11 SHEETS	STA. 1164+00 TO STA. 1177+00	CONTRACT NO. 76A91				
	PLOT DATE = 3/18/11	CHECKED - MBL	REVISED -		ILLINOIS FED. AID PROJECT							
		DATE = 3/18/11	REVISED -									