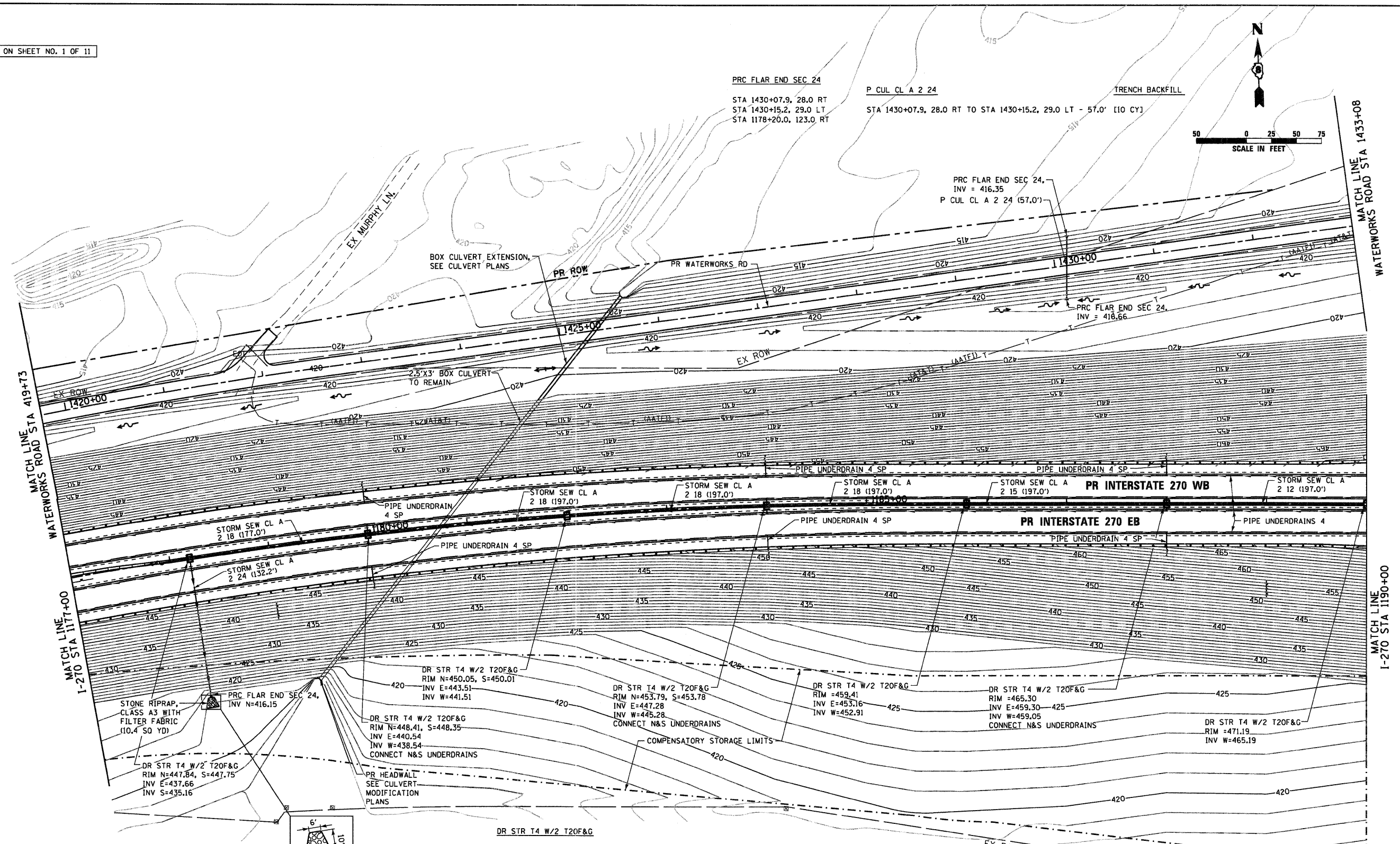


SEE PROPOSED DRAINAGE LEGEND ON SHEET NO. 1 OF 11



<b>STORM SEW CL A 2 18</b>	<b>TRENCH BACKFILL</b>
STA 1178+20.0, 0.0 RT TO STA 1180+00.0, 0.0 RT - 177.0' [255 CY]	
STA 1180+00.0, 0.0 RT TO STA 1182+00.0, 0.0 RT - 197.0' [210 CY]	
STA 1182+00.0, 0.0 RT TO STA 1184+00.0, 0.0 RT - 197.0' [185 CY]	
STA 1184+00.0, 0.0 RT TO STA 1186+00.0, 0.0 RT - 197.0' [150 CY]	
<b>STORM SEW CL A 2 24</b>	<b>TRENCH BACKFILL</b>
STA 1178+20.0, 0.0 RT TO STA 1178+20.0, 123.0 RT - 123.0' [105 CY]	

<b>DR STR T4 W/2 T20F&amp;G</b>	<b>TRENCH BACKFILL</b>
STA 1178+20.0, 0.0 RT	
STA 1180+00.0, 0.0 RT	
STA 1182+00.0, 0.0 RT	
STA 1184+00.0, 0.0 RT	
STA 1186+00.0, 0.0 RT	
STA 1188+00.0, 0.0 RT	
STA 1190+00.0, 0.0 RT	
<b>STORM SEW CL A 2 12</b>	<b>TRENCH BACKFILL</b>
STA 1188+00.0, 0.0 RT TO STA 1190+00.0, 0.0 RT - 197.0' [65 CY]	
<b>STORM SEW CL A 2 15</b>	<b>TRENCH BACKFILL</b>
STA 1186+00.0, 0.0 RT TO STA 1188+00.0, 0.0 RT - 197.0' [75 CY]	

<b>CONC HDWL FOR P DRAIN</b>
STA 1180+00.0, 51.0 LT
STA 1180+00.0, 53.0 RT
STA 1184+00.0, 49.0 LT
STA 1184+00.0, 50.0 RT
STA 1188+00.0, 49.0 LT
STA 1188+00.0, 50.0 RT

<b>PIPE UNDERDRAIN 4 SP</b>
STA 1180+00.0, 33.6 LT TO STA 1180+00.0, 51.0 LT - 17.4'
STA 1180+00.0, 33.6 RT TO STA 1180+00.0, 53.0 RT - 19.4'
STA 1184+00.0, 31.8 LT TO STA 1184+00.0, 49.0 LT - 17.2'
STA 1184+00.0, 31.8 RT TO STA 1184+00.0, 50.0 RT - 18.2'
STA 1188+00.0, 30.5 LT TO STA 1188+00.0, 49.0 LT - 18.5'
STA 1188+00.0, 30.5 RT TO STA 1188+00.0, 50.0 RT - 19.5'
<b>PIPE UNDERDRAINS 4</b>
STA 1177+00.0, 34.1 LT TO STA 1190+00.0, 29.5 LT - 1,305.7'
STA 1177+00.0, 10.1 LT TO STA 1190+00.0, 5.5 LT - 1,301.4'
STA 1177+00.0, 11.3 RT TO STA 1190+00.0, 5.5 RT - 1,298.4'
STA 1177+00.0, 35.3 RT TO STA 1190+00.0, 29.5 RT - 1,294.0'

