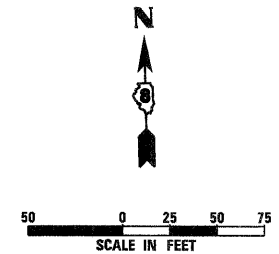
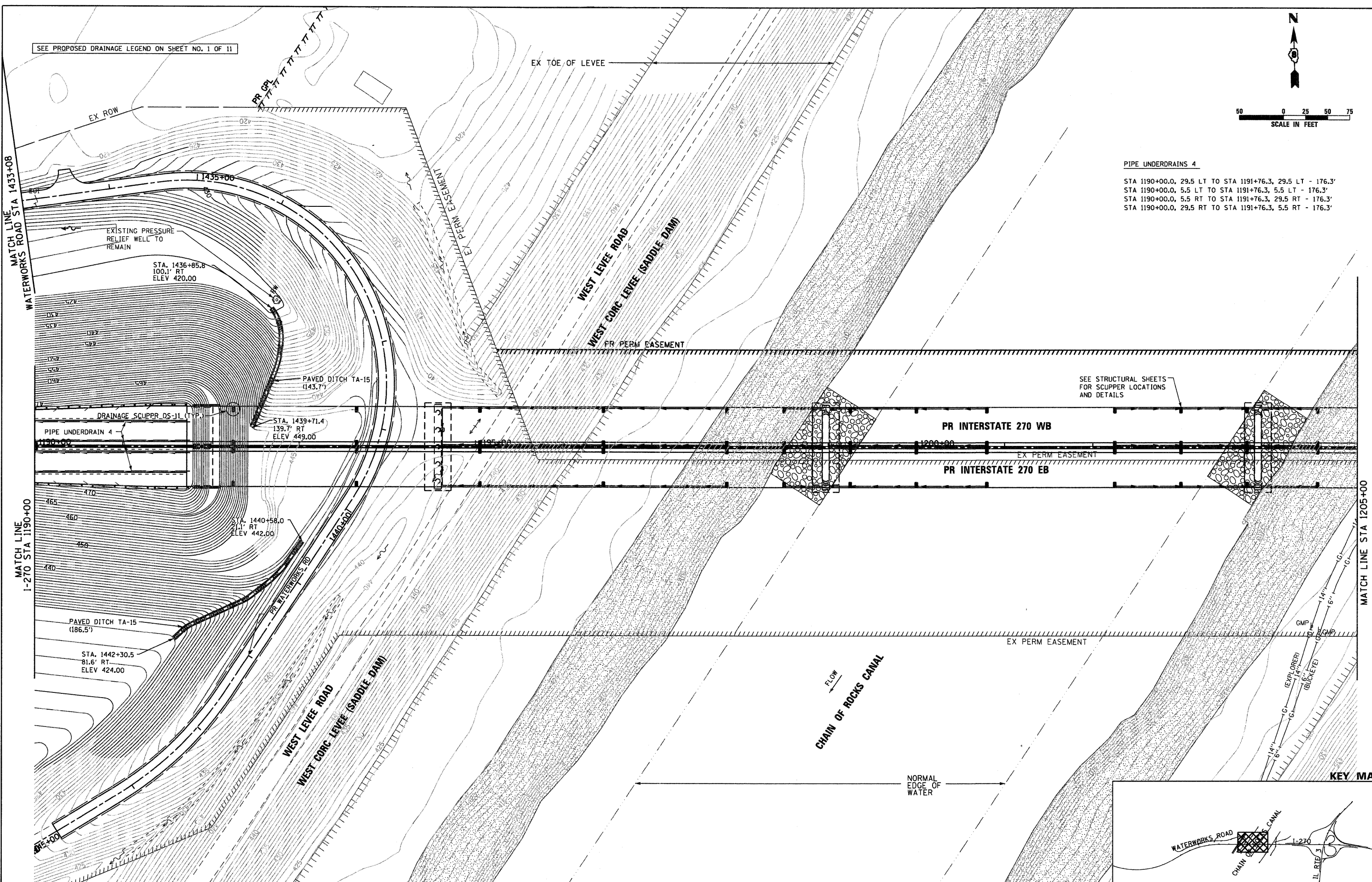


SEE PROPOSED DRAINAGE LEGEND ON SHEET NO. 1 OF 11



PIPE UNDERDRAINS 4
 STA 1190+00.0, 29.5 LT TO STA 1191+76.3, 29.5 LT - 176.3'
 STA 1190+00.0, 5.5 LT TO STA 1191+76.3, 5.5 LT - 176.3'
 STA 1190+00.0, 5.5 RT TO STA 1191+76.3, 29.5 RT - 176.3'
 STA 1190+00.0, 29.5 RT TO STA 1191+76.3, 5.5 RT - 176.3'



SEE STRUCTURAL SHEETS FOR SCUPPER LOCATIONS AND DETAILS

PR INTERSTATE 270 WB

PR INTERSTATE 270 EB

KEY MAP

FILE NAME = DB76A91-Sht-Pr-Drain04.dgn

USER NAME = EDeen
 PLOT SCALE = 1:50
 PLOT DATE = 3/18/11

DESIGNED - JM
 DRAWN - JM
 CHECKED - MBL
 DATE - 3/18/11

REVISED -
 REVISED -
 REVISED -
 REVISED -

**STATE OF ILLINOIS
 DEPARTMENT OF TRANSPORTATION**

**PROPOSED DRAINAGE PLAN
 INTERSTATE 270**

SCALE: 1" = 50' SHEET NO. 4 OF 11 SHEETS STA. 1190+00 TO STA. 1205+00

| F.A.I. RTE. | SECTION | COUNTY | TOTAL SHEETS | SHEET NO. |
|---------------------------|---------|---------|--------------|--------------------|
| 270 | 60-1B-1 | MADISON | 712 | 264 |
| | | | | CONTRACT NO. 76A91 |
| ILLINOIS FED. AID PROJECT | | | | |