

SEE PROPOSED DRAINAGE LEGEND ON SHEET NO. 1 OF 11

**CONC HDWL FOR P DRAIN**

STA 21173+28.3, 26.0 RT  
 STA 21173+28.3, 40.0 LT  
 STA 21169+00.0, 26.0 RT

**PIPE UNDERDRAIN 4 SP**

STA 21173+28.3, 0.0 LT TO STA 21173+28.3, 27.5 LT - 27.5'  
 STA 21173+28.3, 16.0 LT TO STA 21173+28.3, 40.0 LT - 24.0'  
 STA 21169+15.0, 16.0 LT TO STA 21169+15.0, 19.0 RT - 35.0'

**PIPE UNDERDRAINS 4**

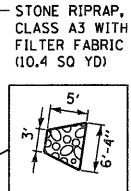
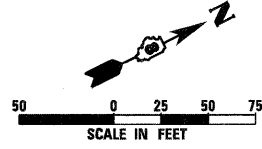
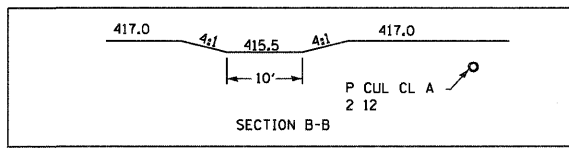
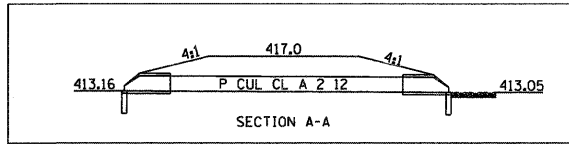
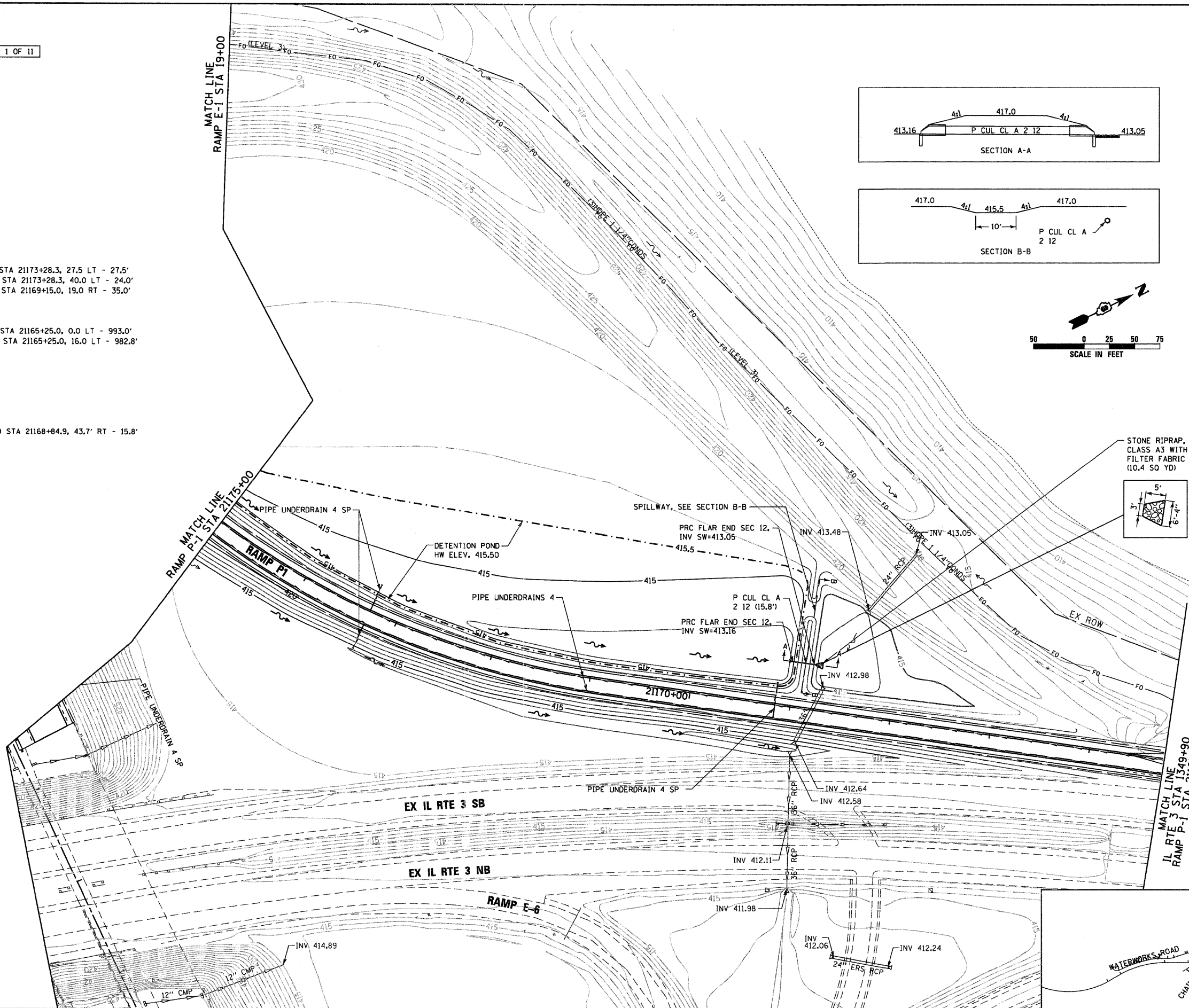
STA 21175+00.0, 0.0 LT TO STA 21165+25.0, 0.0 LT - 993.0'  
 STA 21175+00.0, 16.0 LT TO STA 21165+25.0, 16.0 LT - 982.8'

**PRC FLAR END SEC 12**

STA 21169+00.9, 43.8' RT  
 STA 21168+84.9, 43.7' RT

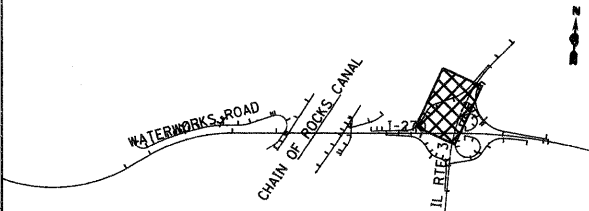
**P CUL CL A 2 12**

STA 21169+00.9, 43.8' RT TO STA 21168+84.9, 43.7' RT - 15.8'



MATCH LINE  
 IL RTE 3 STA 1349+90  
 RAMP P-1 STA 21165+25

**KEY MAP**



FILE NAME = 0676A91-Sht-Pr-Dr-a1n08.dgn

USER NAME = EDean  
 PLOT SCALE = 1/8"=1'-0"  
 PLOT DATE = 3/18/11

DESIGNED - JWM  
 DRAWN - JWM  
 CHECKED - MBL  
 DATE - 3/18/11

REVISED -  
 REVISED -  
 REVISED -  
 REVISED -

**STATE OF ILLINOIS  
 DEPARTMENT OF TRANSPORTATION**

**PROPOSED DRAINAGE PLAN  
 IL RTE 3**

SCALE: 1" = 50' SHEET NO. 8 OF 11 SHEETS STA. 1361+00 TO STA. 1349+90

F.A.I. RTE.	SECTION	COUNTY	TOTAL SHEETS	SHEET NO.
270	60-1B-1	MADISON	712	268
				CONTRACT NO. 76A91
ILLINOIS FED. AID PROJECT				