

SPACE RESERVED FOR RECORDING OFFICER

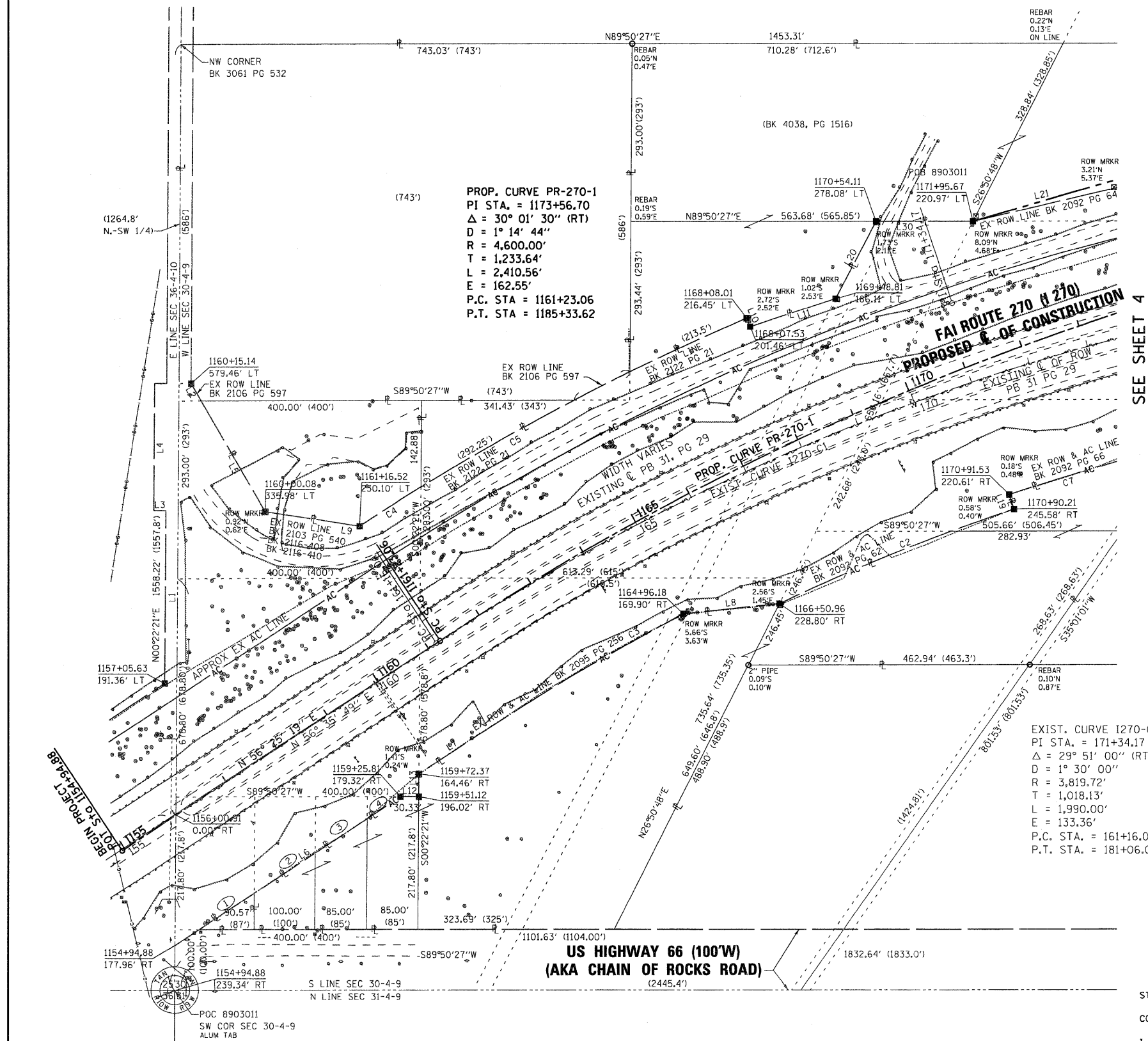
SEE BASIS OF COORDINATES AND BEARINGS STATEMENT ON SHEET 2

STATION	OFFSET	NORTH	EAST
1157+05.63	191.36' LT	763500.9286	301421.1123
1160+15.14	579.46' LT	763995.4546	301464.3290
1160+00.08	335.98' LT	763784.2783	301586.4452
1161+16.52	230.10' LT	763760.4612	301742.0080
1168+08.01	216.45' LT	764103.4899	302379.7866
1168+07.53	201.46' LT	764089.6971	302385.6822
1169+48.81	186.11' LT	764135.9823	302526.2865
1170+54.11	278.08' LT	764263.4383	302592.9788
1171+95.67	220.97' LT	764263.8824	302752.7584
1170+90.21	245.58' RT	763790.5086	302820.7174
1170+91.53	220.61' RT	763814.1967	302812.7253
1166+50.96	228.80' RT	763634.6321	302434.1833
1164+96.18	169.90' RT	763617.2166	302275.7970
1159+51.12	196.02' RT	763313.9664	301839.8881
1159+72.37	164.46' RT	763352.0145	301840.1355
1159+25.81	179.32' RT	763313.8821	301809.5584
1156+00.91	0.00' RT	763285.5278	301439.7119
1154+94.88	177.96' RT	763069.0549	301438.3042
1154+94.88	239.34' RT	762995.0570	301437.8230

NUMBER	BOOK/PAGE
1	2106/199
2	2106/67
3	2091/221
4	2082/242

LINE	LENGTH	BEARING
L1	284.80'	N00°22'21"E
L2	32.94'	S30°02'22"E
L3	20.00'	N89°37'39"W
L4	210.00'	N00°22'21"E
L5	211.00'	S30°02'22"E
L6	397.28'	N56°35'48"E
L7	142.94' (144.88')	N56°35'48"E
L8	159.34' (159.34')	N83°43'31"E
L9	157.38'	S81°17'44"E
L10	15.00' (15')	N23°08'38"W
L11	148.03' (148.03')	S71°46'45"W
L12	30.33' (29')	S89°50'27"W
L13	38.05' (37.7')	S00°22'21"W
L19	25.00' (25')	S18°38'38"E
L20	143.85' (143.51')	S27°37'16"W
L21	232.70'	S76°58'21"W
L30	159.78' (160')	N89°50'27"E

CURVE	LENGTH	RADIUS	CHORD BEARING	CHORD
C2	417.01' (417.01')	3599.72'	S68°02'15"W	416.78'
C3	367.37' (367.37')	3654.72'	S59°28'35"W	367.22'
C4	120.07'	4049.72'	S57°26'46"W	120.07'
C5	605.07'	4049.72'	S62°34'33"W	604.51'
C7	300.15' (300.15')	3624.72'	S73°43'42"W	300.07'



PROP. CURVE PR-270-1  
 PI STA. = 1173+56.70  
 $\Delta = 30^\circ 01' 30''$  (RT)  
 $D = 1^\circ 14' 44''$   
 $R = 4,600.00'$   
 $T = 1,233.64'$   
 $L = 2,410.56'$   
 $E = 162.55'$   
 P.C. STA. = 1161+23.06  
 P.T. STA. = 1185+33.62

EXIST. CURVE I270-C1  
 PI STA. = 171+34.17  
 $\Delta = 29^\circ 51' 00''$  (RT)  
 $D = 1^\circ 30' 00''$   
 $R = 3,819.72'$   
 $T = 1,018.13'$   
 $L = 1,990.00'$   
 $E = 133.36'$   
 P.C. STA. = 161+16.04  
 P.T. STA. = 181+06.04

SEE SHEET 4

STATE OF ILLINOIS )  
 ) SS  
 COUNTY OF MADISON )

I, GREGORY S. McVICAR, AN ILLINOIS PROFESSIONAL LAND SURVEYOR, STATE THAT I HAVE SURVEYED THE PLAT OF HIGHWAY SHOWN HEREON AND THAT THIS PROFESSIONAL SERVICE CONFORMS TO THE CURRENT ILLINOIS MINIMUM STANDARDS FOR A BOUNDARY SURVEY FOR THE PROPOSED PARCEL(S) TO BE ACQUIRED BY THE STATE OF ILLINOIS, DEPARTMENT OF TRANSPORTATION, SHOWN HEREON.

DATED \_\_\_\_\_

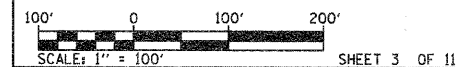
GREGORY S. McVICAR, PLS NO. 3512  
 LICENSE EXPIRATION DATE: 11/30/2012



**SHERRILL ASSOCIATES, INC.**  
 Engineers - Surveyors - Planners  
 Professional Design Firm Number 184-001238  
 316 North Main Street 2727 Lemay Ferry Road  
 Edwardsville, IL 62025 St. Louis, MO 63125

ILLINOIS DEPARTMENT OF TRANSPORTATION  
**PLAT OF HIGHWAYS**  
 FAI ROUTE 270 (I 270)  
 SECTION 60-1B-1  
 MADISON COUNTY  
 JOB NO. R-98-003-09

STATION 1154+94.88 TO STATION 1173+00



ILLINOIS DEPARTMENT OF TRANSPORTATION  
 DIVISION OF HIGHWAYS/REGION 5/DISTRICT 8  
 1102 EASTPORT PLAZA DRIVE  
 COLLINGSVILLE, ILLINOIS 62234-6198

F.A.I. RTE.	SECTION	COUNTY	TOTAL SHEETS	SHEET NO.
270	60-1B-1	MADISON	712	289

CONTRACT NO. 76A91

COMPLETION DATE OF FIELD WORK PERFORMED	
LAND SURVEY:	4/2/09
ROW STAKING:	