

PART OF THE SE 14 OF SEC. 30, T. 4 N., R. 9 W., OF THE 3RD PM, MADISON COUNTY, ILLINOIS



SPACE RESERVED FOR RECORDING OFFICER

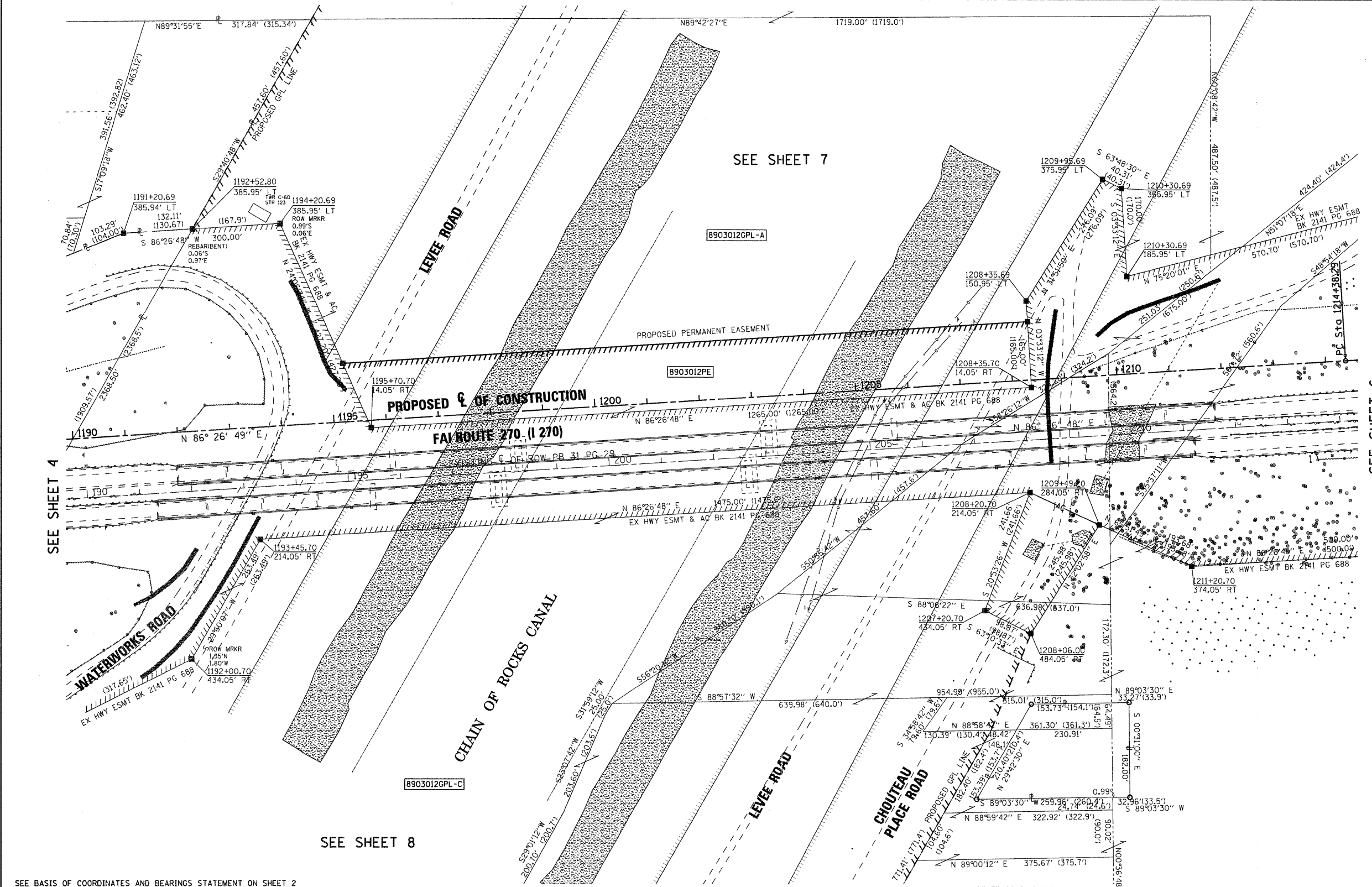
PROP. CURVE PR-270-2
 PI STA. = 1216+98.07
 Δ = 8° 15' 18" (RT)
 D = 1° 35' 30"
 R = 3,600.00'
 T = 259.78'
 L = 518.67'
 E = 9.36'
 P.C. STA = 1214+38.29
 P.T. STA = 1219+56.96

SEE SHEET 7

SEE SHEET 6

SEE SHEET 8

SEE SHEET 4



SEE BASIS OF COORDINATES AND BEARINGS STATEMENT ON SHEET 2

COORDINATE TABLE			
STATION	OFFSET	NORTH	EAST
1191+20.69	385.94' LT	764752.7055	304695.8214
1192+52.80	385.95' LT	764760.8930	304827.6739
1194+20.69	385.95' LT	764771.2984	304995.2447
1195+70.70	14.05' RT	764381.3638	305169.7469
1208+35.70	14.05' RT	764459.7639	306432.3151
1208+35.69	150.95' LT	764624.4467	306422.0890
1209+95.69	375.95' LT	764858.9304	306567.8367
1210+30.69	355.95' LT	764841.1380	306604.0089
1210+30.69	185.95' LT	764671.4648	306614.5449
1211+20.70	374.05' RT	764118.1192	306739.0787
1209+49.20	284.05' RT	764197.3173	306562.3305
1208+20.70	214.05' RT	764259.2187	306429.7392
1207+20.70	434.05' RT	764033.4440	306343.5662
1208+06.00	484.05' RT	763988.8267	306431.8010
1192+00.70	434.05' RT	763939.2399	304826.4882
1193+45.70	214.05' RT	764167.8036	304957.5747

STATE OF ILLINOIS)
) SS
 COUNTY OF MADISON)

I, GREGORY S. McVICAR, AN ILLINOIS PROFESSIONAL LAND SURVEYOR, STATE THAT I HAVE SURVEYED THE PLAT OF HIGHWAY SHOWN HEREON AND THAT THIS PROFESSIONAL SERVICE CONFORMS TO THE CURRENT ILLINOIS MINIMUM STANDARDS FOR A BOUNDARY SURVEY FOR THE PROPOSED PARCEL(S) TO BE ACQUIRED BY THE STATE OF ILLINOIS, DEPARTMENT OF TRANSPORTATION, SHOWN HEREON.

DATED _____

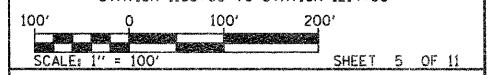
GREGORY S. McVICAR, PLS NO. 3512
 LICENSE EXPIRATION DATE: 11/30/2012



COMPLETION DATE OF FIELD WORK PERFORMED	
LAND SURVEY:	4/2/09
ROW STAKING:	

SHERRILL ASSOCIATES, INC.
 Engineers - Surveyors - Planners
 Professional Design Firm Number 184-001298
 316 North Main Street, Edwardsville, IL 62025
 2727 Lemay Ferry Road, St. Louis, MO 63125

ILLINOIS DEPARTMENT OF TRANSPORTATION
PLAT OF HIGHWAYS
 FAI ROUTE 270 (I-270)
 SECTION 60-1B-1
 MADISON COUNTY
 JOB NO. R-98-003-09
 STATION 1190+00 TO STATION 1214+00



ILLINOIS DEPARTMENT OF TRANSPORTATION
 DIVISION OF HIGHWAYS/REGION 5/DISTRICT 8
 1102 EASTPORT PLAZA DRIVE
 COLLINSVILLE, ILLINOIS 62234-6198

F.A.I. RTE.	SECTION	COUNTY	TOTAL SHEETS	SHEET NO.
270	60-1B-1	MADISON	712	291
				CONTRACT NO. 76A91
FED. ROAD DIST. NO. [] ILLINOIS FED. AID PROJECT				