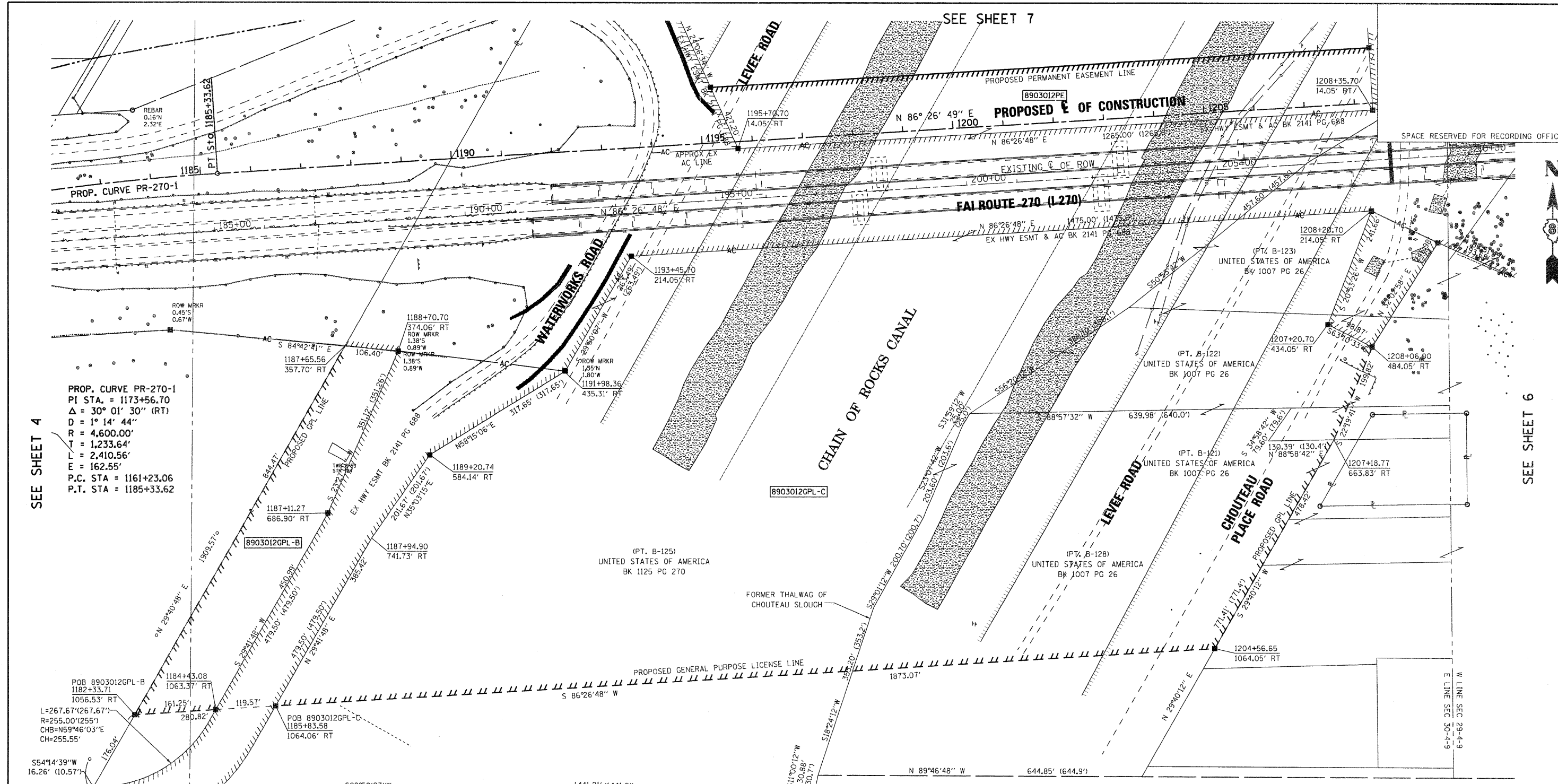


PART OF THE SE 1/4 OF SEC. 30, T. 4 N., R. 9 W., OF THE 3RD PM, MADISON COUNTY, ILLINOIS

SEE SHEET 7



PROP. CURVE PR-270-1
 PI STA. = 1173+56.70
 Δ = 30° 01' 30" (RT)
 D = 1° 14' 44"
 R = 4,600.00'
 T = 1,233.64'
 L = 2,410.56'
 E = 162.55'
 P.C. STA = 1161+23.06
 P.T. STA = 1185+33.62

SEE SHEET 4

SEE SHEET 6

POB 8903012GPL-B
 1182+33.71
 1056.53' RT
 L=267.67'(267.67')
 R=255.00'(255')
 CHB=N59°46'03"E
 CH=255.55'

POB 8903012GPL-C
 1185+83.58
 1064.06' RT
 L=372.63'(372.63')
 R=355.00'(355')
 CHB=N59°46'03"E
 CH=355.76'

SW COR SE 1/4 SEC. 30-4-9
 POC 8903012PE
 POC 8903012GPL-A
 POC 8903012GPL-B
 POC 8903012GPL-C

US HIGHWAY 66 (100'W)
 (AKA CHAIN OF ROCKS ROAD)
 S LINE SEC. 30-4-9

SEE BASIS OF COORDINATES AND BEARINGS STATEMENT ON SHEET 2

STATION	COORDINATE TABLE		
	OFFSET	NORTH	EAST
1182+33.71	1056.53' RT	1056.53' RT	303969.3073
1184+43.08	1063.37' RT	1063.37' RT	304130.2498
1185+83.58	1064.06' RT	1064.06' RT	304249.5962
1187+94.90	741.73' RT	741.73' RT	304440.5394
1187+11.27	686.90' RT	686.90' RT	304353.6735
1189+20.74	584.14' RT	584.14' RT	304556.3688
1187+65.56	357.70' RT	357.70' RT	304387.4532
1188+70.70	374.06' RT	374.06' RT	304493.4040
1191+98.36	435.31' RT	435.31' RT	304826.4882
1193+45.70	214.05' RT	214.05' RT	304957.5747
1195+70.70	14.05' RT	14.05' RT	305169.7469
1208+35.70	14.05' RT	14.05' RT	306432.3151
1208+20.70	214.05' RT	214.05' RT	306429.7392
1207+20.70	434.05' RT	434.05' RT	306343.5662
1208+06.00	484.05' RT	484.05' RT	306431.8010
1204+56.65	1064.05' RT	1064.05' RT	306119.0650
1207+18.77	663.83' RT	663.83' RT	306355.8869

STATE OF ILLINOIS)
) SS
 COUNTY OF MADISON)

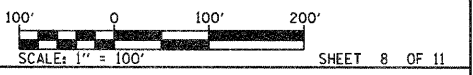
I, GREGORY S. McVICAR, AN ILLINOIS PROFESSIONAL LAND SURVEYOR, STATE THAT I HAVE SURVEYED THE PLAT OF HIGHWAY SHOWN HEREON AND THAT THIS PROFESSIONAL SERVICE CONFORMS TO THE CURRENT ILLINOIS MINIMUM STANDARDS FOR A BOUNDARY SURVEY FOR THE PROPOSED PARCEL(S) TO BE ACQUIRED BY THE STATE OF ILLINOIS, DEPARTMENT OF TRANSPORTATION, SHOWN HEREON.

DATED _____
 GREGORY S. McVICAR, PLS NO. 3512
 LICENSE EXPIRATION DATE: 11/30/2010



SHERRILL ASSOCIATES, INC.
 Engineers - Surveyors - Planners
 Professional Design Firm Number 184-001288
 316 North Main Street, 2727 Lemay Ferry Road
 Edwardsville, IL 62025 St. Louis, MO 63125

ILLINOIS DEPARTMENT OF TRANSPORTATION
 PLAT OF HIGHWAYS
 FAI ROUTE 270 (I 270)
 SECTION 60-1B-1
 MADISON COUNTY
 JOB NO. R-98-003-09
 STATION 1182+00 TO STATION 1208+00



ILLINOIS DEPARTMENT OF TRANSPORTATION
 DIVISION OF HIGHWAYS/REGION 5/DISTRICT 8
 1102 EASTPORT PLAZA DRIVE
 COLLINSVILLE, ILLINOIS 62234-6198

F.A.I. RTE.	SECTION	COUNTY	TOTAL SHEETS	SHEET NO.
270	60-1B-1	MADISON	712	294

CONTRACT NO. 76A91

PARCEL NO.	OWNER	TOTAL HOLDING ACRES	GENERAL PURPOSE LICENSE		PERMANENT TAX NUMBER	PROPERTY ACQUIRED BY
			GPL = GENERAL PURPOSE LICENSE ACRES	SO. FT.		
8903012	UNITED STATES OF AMERICA FILE NUMBERS 252646 & 251945	N/A	GPL-B = 2,412 GPL-C = 34.0527	GPL-B = 105,165 GPL-C = 1,483,337	18-1-14-30-00-000-007 18-1-14-30-00-000-007.001	