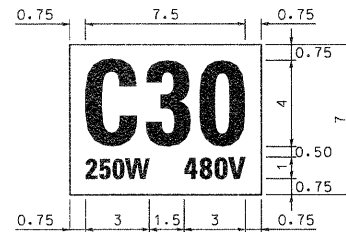


NO BORDER, BLACK ON WHITE;
[C30] C 520 SPACING; [250W] C; [480V] C.

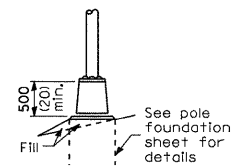


THE CONTRACTOR SHALL FURNISH AND INSTALL A LIGHT POLE IDENTIFICATION OF EACH NEW LIGHT POLE, AS SHOWN ABOVE, AND CONFORMING TO THE REQUIREMENTS OF SECTION 630 AND ARTICLE 1069.06 OF THE STANDARD SPECIFICATIONS.

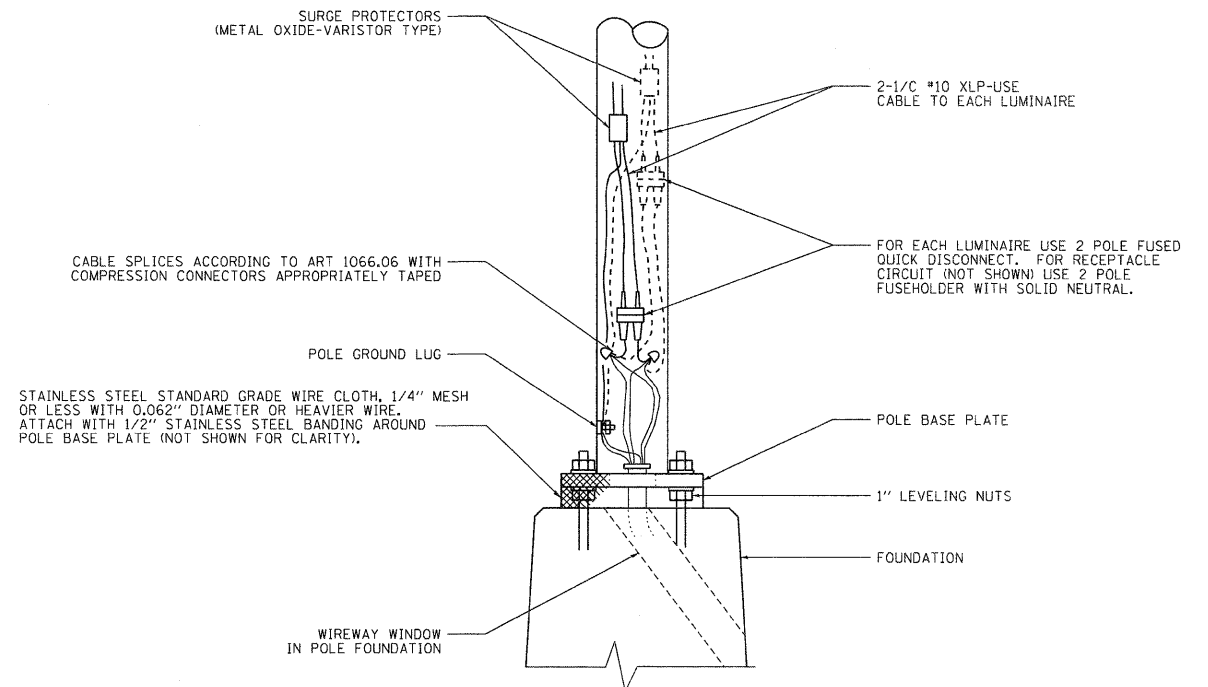
THE LIGHT POLE IDENTIFICATION PANEL SHALL BE MOUNTED, APPROXIMATELY 7 FT. ABOVE THE ADJACENT PAVEMENT GRADE, VISIBLE TO APPROACHING TRAFFIC.

LIGHT POLE IDENTIFICATION

N.T.S.



TRANSFORMER BASE

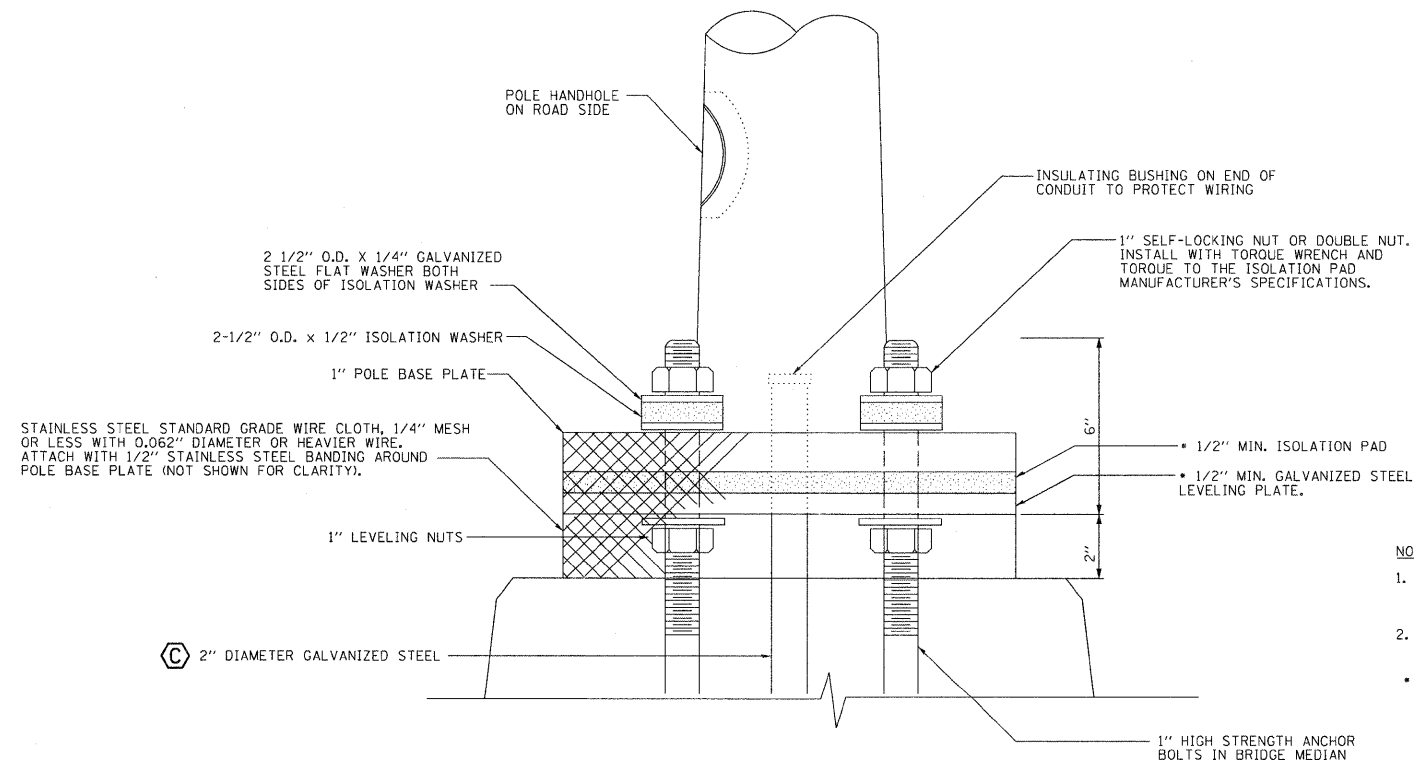


POLE BASE WIRING DETAIL

N.T.S.

NOTES:

1. ALL TAPED SPLICES SHALL USE 2 LAYERS OF ELECTRICAL TAPE OVER 3 LAYERS OF RUBBER TAPE AS REQUIRED BY THE STANDARD SPECIFICATIONS. COAT THE FINISHED TAPED SPLICE WITH BONDING COMPOUND.
2. ALL CABLE SPLICES SHALL BE TAPED UNLESS ANOTHER METHOD HAS BEEN SPECIFICALLY APPROVED BY THE ENGINEER.
3. FOR EXAMPLE PURPOSES, THE POLE IS SHOWN ON AN ANCHOR BASE. IF THE POLE IS REQUIRE TO BE SET ON A BREAKAWAY BASE, CONSULT THE STADARD SPECIFICATIONS.



POLE MOUNTED ON BRIDGE MEDIAN DETAIL

N.T.S.

NOTES:

1. THICKNESS OF ISOLATION PAD AND WASHERS SHALL BE ACCORDING TO ISOLATION PAD MANUFACTURER'S RECOMMENDATIONS BASED UPON POLE HEIGHT AND LOADING.
2. ALL HARDWARE SHALL BE GALVANIZED OR STAINLESS STEEL, UNLESS NOTED OTHERWISE.

* ISOLATION PAD AND LEVELING PLATE ARE TO MATCH THE FOOTPRINT OF THE POLE BASE PLATE

FILE NAME =	USER NAME = #USER#	DESIGNED -	REVISED -	STATE OF ILLINOIS DEPARTMENT OF TRANSPORTATION	LIGHTING DETAILS INTERSTATE 270			FAI	SECTION	COUNTY	TOTAL SHEETS	SHEET NO.	
*FILEL#		DRAWN -	REVISED -		SCALE:	SHEET NO. 2 OF 10 SHEETS	STA.	TO STA.	270	60-1B-1	MADISON	712	340
	PLOT SCALE = #SCALE#	CHECKED -	REVISED -										
	PLOT DATE = #DATE#	DATE 3/18/11	REVISED -										CONTRACT NO. 76A91



ILLINOIS FED. AID PROJECT