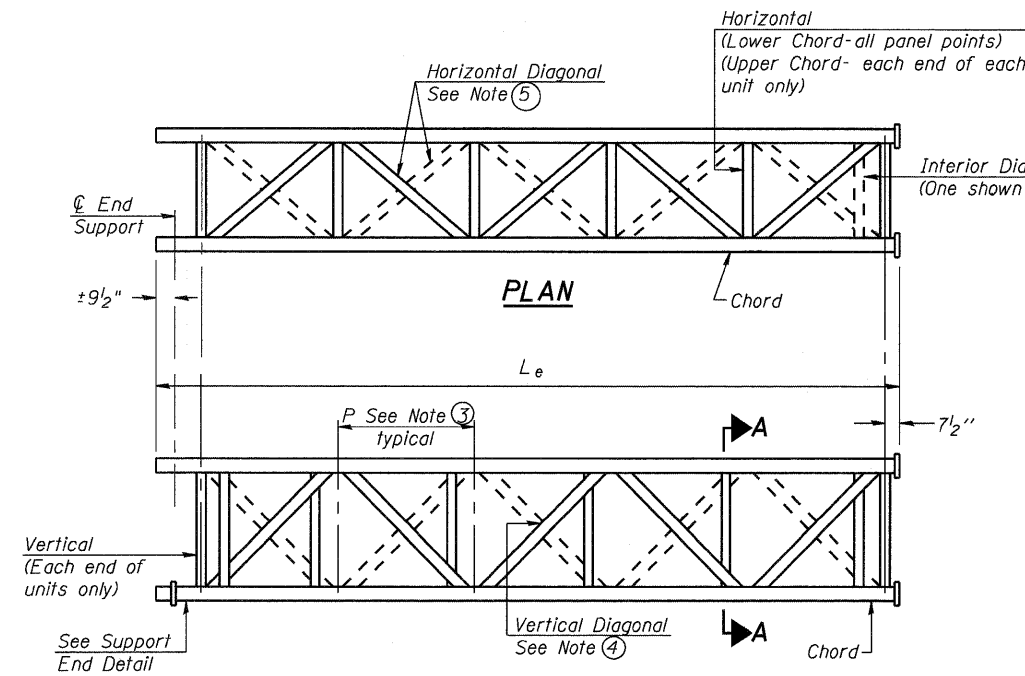
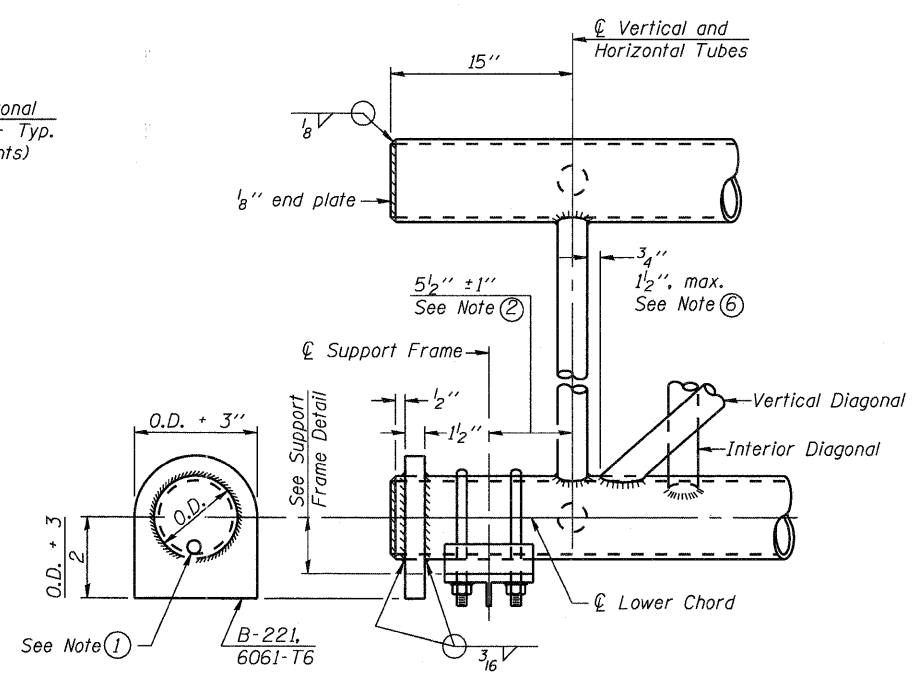


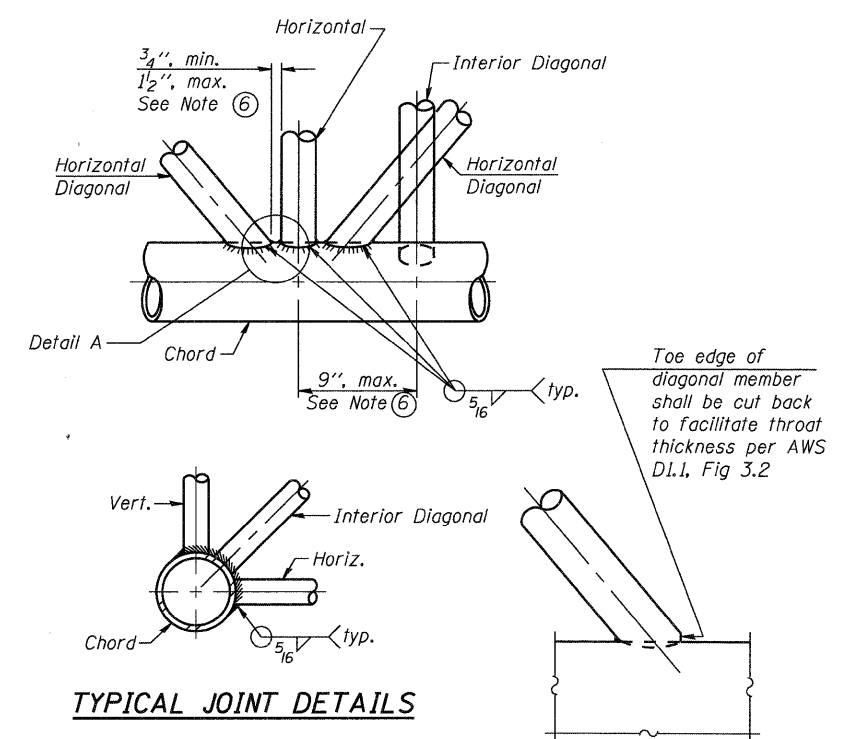
**ELEVATION  
TYPICAL INTERIOR UNIT**  
Even number of panels/interior unit required.



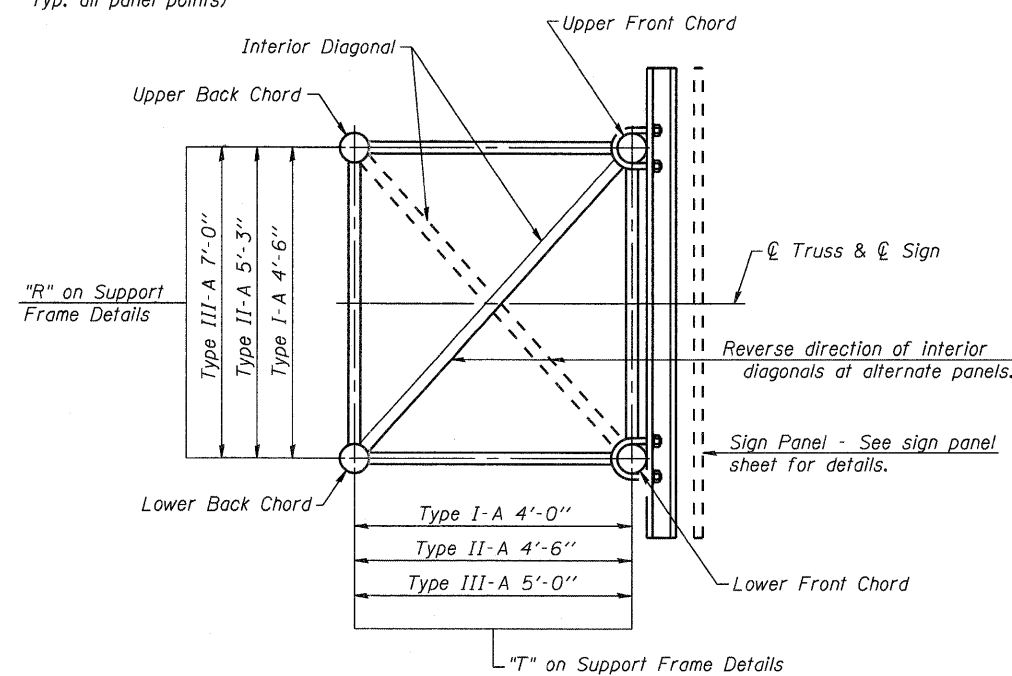
**ELEVATION  
TYPICAL EXTERIOR UNIT**  
Even or odd number of panels/exterior units allowed.



**SUPPORT END DETAIL FOR EXTERIOR UNIT**



**TYPICAL JOINT DETAILS**



**SECTION A-A**

- ① Contractor may alternatively use standard aluminum drive-fit cap to close end. 1/2"  $\phi$  drain hole in end plate/drive-fit cap. (Typ. at ends of all chords)
- ② 5 1/2" end dimension may vary by  $\pm 1"$  to provide uniform panel spacing (P).
- ③ Panel spacing (P) shall be uniform for entire truss and between 4'-0" and 5'-0" for Type I-A or 4'-0" and 5'-6" for Types II-A and III-A.
- ④ Vertical Diagonals in front and back face shall alternate.
- ⑤ Hidden lines show wind bracing alternates direction between planes of top and bottom chords.
- ⑥ All diagonals shall be detailed for minimum offset from the panel point based on the following: Offset shall be such as to provide a 3/4" minimum to 1/2" maximum clearance between any diagonal and any horizontal or vertical member, and to provide clearance for U-bolt connections of signs or walkway brackets.

OS-A-2

1-20-11

FILE NAME = ... \DB76A91-002-sign-os-a-2.dgn  
PLOT SCALE = 0:1.000000 1' / IN.  
PLOT DATE = 3/14/2011

USER NAME = .CFC.  
DESIGNED - MCB  
CHECKED - GJB  
DRAWN - CFC  
CHECKED - MCB

REVISED -  
REVISED -  
REVISED -  
REVISED -

STATE OF ILLINOIS  
DEPARTMENT OF TRANSPORTATION

OVERHEAD SIGN STRUCTURES - ALUMINUM TRUSS  
DETAILS FOR TRUSS TYPES I-A, II-A AND III-A

SHEET NO. 2 OF 11 SHEETS

**CB** Coombe-Bloxdorf P.C.  
- CIVIL ENGINEERS -  
- STRUCTURAL ENGINEERS -  
- LAND SURVEYORS -  
Design Firm License No. 184-002703

F.A.I. RTE.	SECTION	COUNTY	TOTAL SHEETS	SHEET NO.
270	60-1B-1	MADISON	712	368
				CONTRACT NO. 76A91

ILLINOIS FED. AID PROJECT