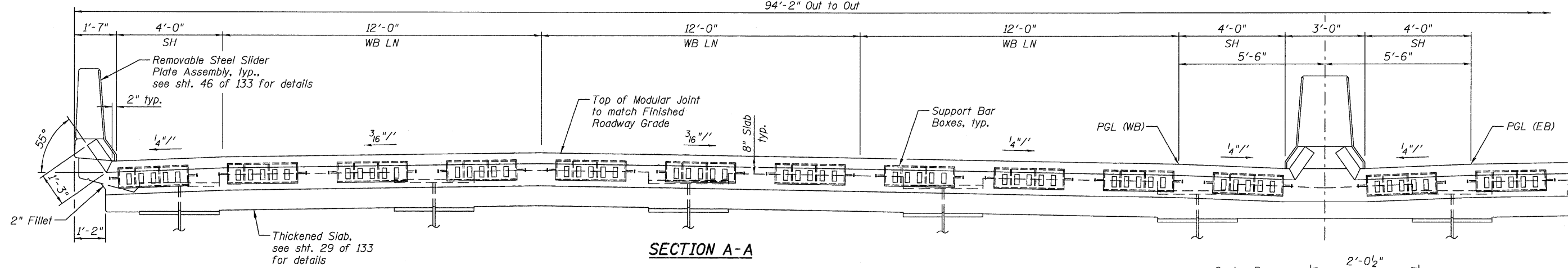
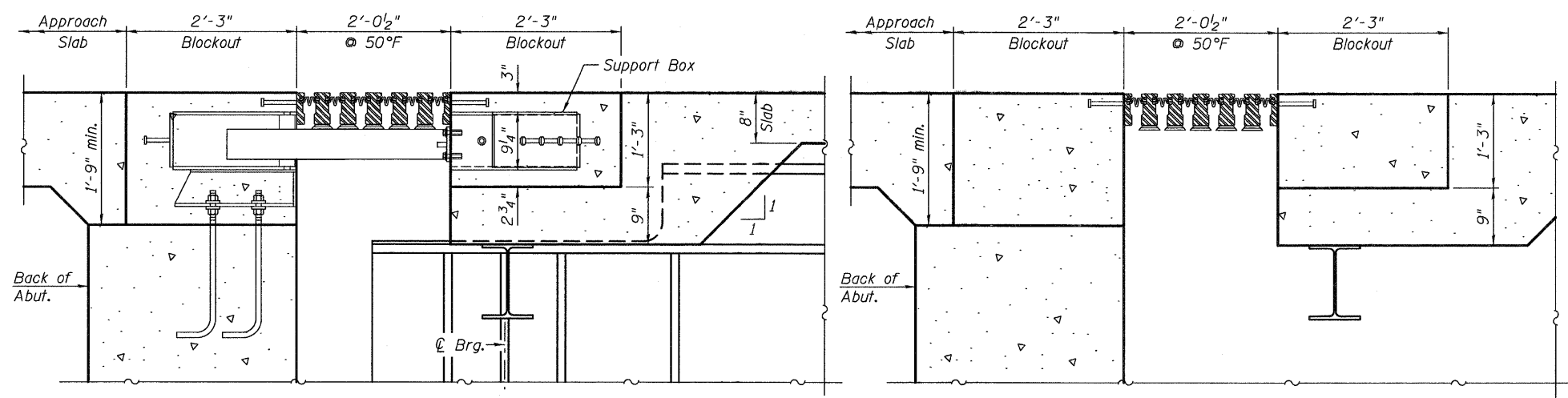


PLAN AT MODULAR EXPANSION JOINT
W. Abutment shown, E. Abutment similar

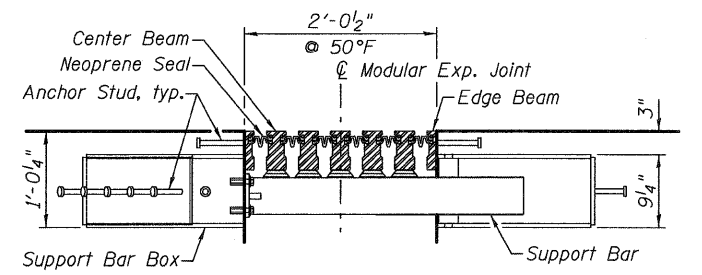


SECTION A-A



SECTION B-B

SECTION C-C



MODULAR EXP. JOINT DETAIL

NOTES:

1. The modular expansion joint system, including anchorages and support bar boxes shall be supplied by the approved chosen manufacturer.
2. The details shown are intended to be schematic. The actual components of the expansion joint system may vary from those shown. This includes, but is not limited to the number of cells, number of support bars, support bar spacing, and support bar box size. However, the total required range of expansion remains unchanged regardless of manufacturer chosen.
3. Structural steel for modular joints shall be galvanized.
4. The modular expansion joint system shall accommodate 18 3/4" total longitudinal movement.
5. Modular expansion joints shall be assembled in their final relative position with the ends in place for shop inspection and acceptance.

3/15/2011 2:15:29 PM c:\pwworking\homa\d0549104\0600345-76A91-045-EXP.dgn jmgus



USER NAME = jmgus	DESIGNED - BWC	REVISED -
FILE NAME = 0600345-76A91-045-EXP.DGN	CHECKED - LGP	REVISED -
PLOT SCALE = NONE	DRAWN - JM	REVISED -
PLOT DATE = 3/18/2011	CHECKED - BSK	REVISED -

**STATE OF ILLINOIS
DEPARTMENT OF TRANSPORTATION**

**MODULAR EXPANSION JOINT DETAILS
STRUCTURE NO. 060-0345**

BRIDGE SHEET NO. 45 OF 133 SHEETS

F.A.I. RTE. 270	SECTION 60-18-1	COUNTY MADISON	TOTAL SHEETS 712	SHEET NO. 424
CONTRACT NO. 76A91				
ILLINOIS FED. AID PROJECT				