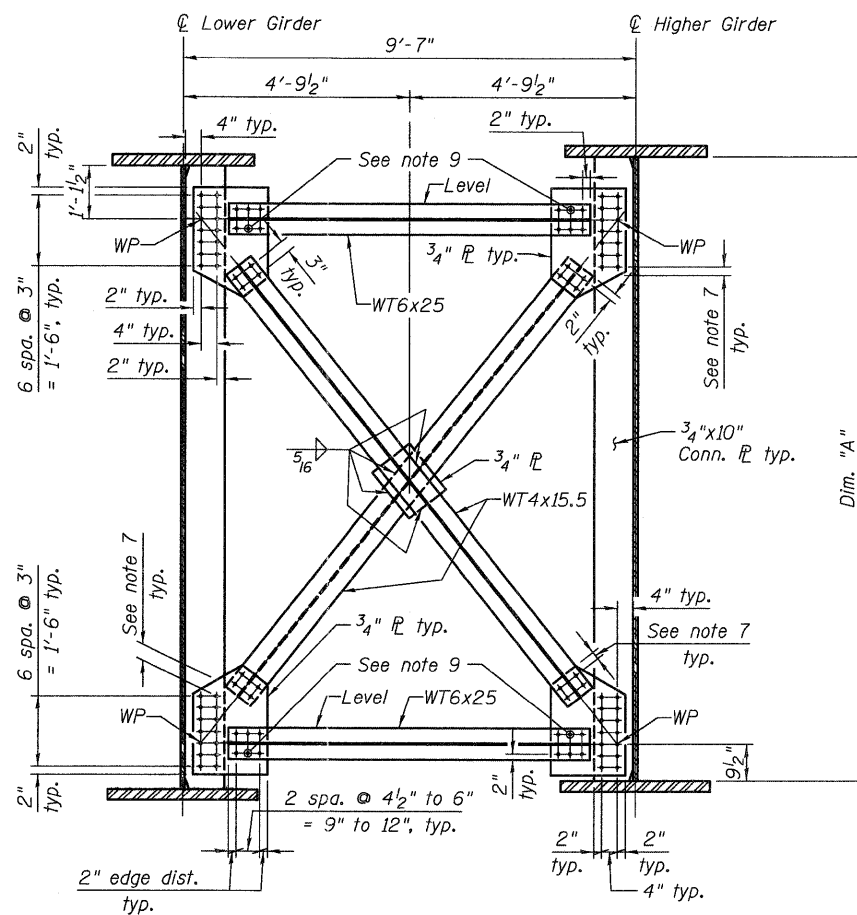


INTERMEDIATE CROSS FRAME - BAYS 1, 2, 4, 5, 6, 8 & 9

Cross Frame	Web Dim "A"	Number Required					
		Span 1	Span 2	Span 3	Span 4	Span 5	Total
CF-8	8'-0"	56	-	-	-	-	56
CF-9	8'-7 ⁵ / ₁₆ "	7	-	-	-	-	7
CF-10	10'-1 ⁹ / ₁₆ "	7	-	-	-	-	7
CF-17	11'-3"	-	119	119	119	-	357
CF-18	11'-7 ³ / ₁₆ "	-	7	14	7	-	28
CF-19	12'-6 ⁵ / ₈ "	-	7	14	7	-	28
CF-26	10'-6 ³ / ₄ "	-	-	-	-	7	7
CF-27	9'-7 ¹ / ₂ "	-	-	-	-	7	7
CF-28	9'-3"	-	-	-	-	84	84



INTERMEDIATE CROSS FRAME - BAYS 3 & 7

Cross Frame	Web Dim "A"	Number Required					
		Span 1	Span 2	Span 3	Span 4	Span 5	Total
CF-5	8'-0"	16	-	-	-	-	16
CF-6	8'-7 ⁵ / ₁₆ "	2	-	-	-	-	2
CF-7	10'-1 ⁹ / ₁₆ "	2	-	-	-	-	2
CF-14	11'-3"	-	34	34	34	-	102
CF-15	11'-7 ³ / ₁₆ "	-	2	4	2	-	8
CF-16	12'-6 ⁵ / ₈ "	-	2	4	2	-	8
CF-23	10'-6 ³ / ₄ "	-	-	-	-	2	2
CF-24	9'-7 ¹ / ₂ "	-	-	-	-	2	2
CF-25	9'-3"	-	-	-	-	24	24

NOTES:

- For General Notes, see sheet 3 of 133.
- All bolted cross frame connections shall be High Strength AASHTO M164 Type 3, 7/8" φ bolts in 1 5/16" φ holes, unless noted otherwise.
- Class B contact surface, for slip resistance, shall be provided for all cross frame connections.
- All bolts shall be sized to exclude threads from shear planes, see bolt detail on sheet 63 of 133.
- 1" maximum gap between cross frame member and connection plate.
- All bolt holes are to be subpunched and reamed to size or drilled to full size.
- 1 3/4" to 4" edge distance shall be provided.
- Bolted WT member connections of Intermediate Cross Frame - Bays 3 & 7 are provided for future deck replacement. These cross frames are to be completely assembled by the Fabricator.
- The four circled bolts shown in Intermediate Cross Frame - Bays 3 & 7 shall be high strength AASHTO M253 Type 3, 1 1/2" φ bolt in 1 9/16" φ hole, and shall be located as shown.
- All cross frames or diaphragms between beams or girders shall be installed with erection pins and bolts in accordance with the erection plan approved by the Engineer. Individual cross frames or diaphragms at supports may be temporarily disconnected to install bearing anchor rods.

c:\pwworking\king\omca\d0549104\0600345-76A91-060-FRD.dgn

3/15/2011 7:25:39 PM