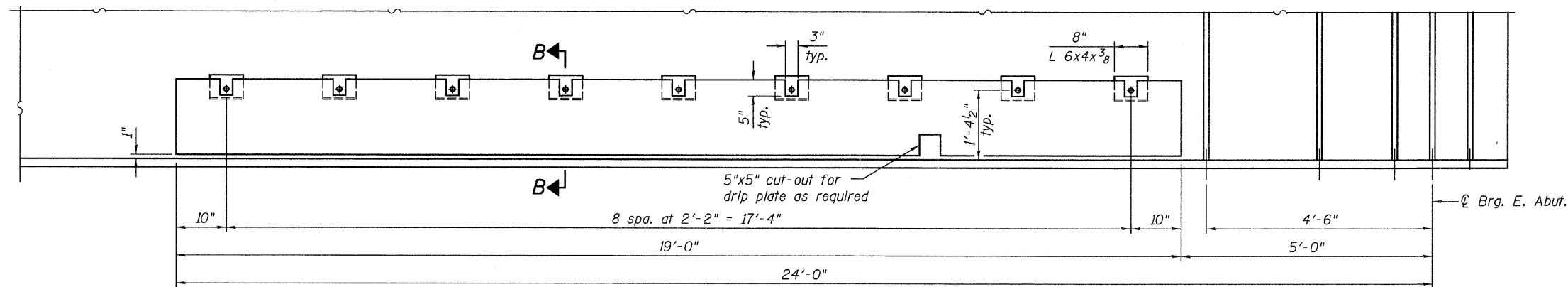
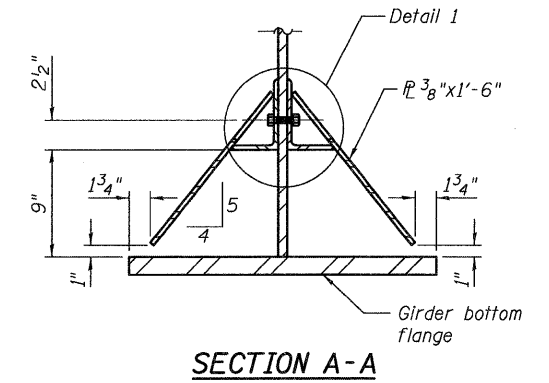


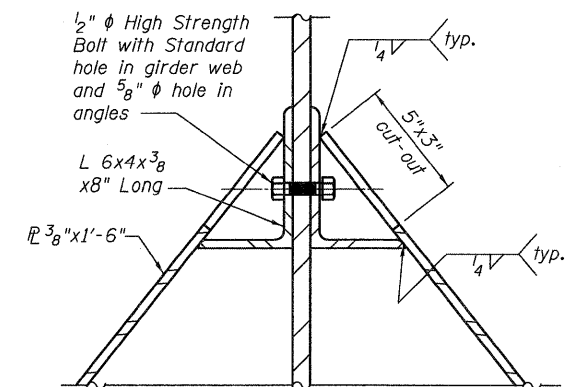
BOTTOM FLANGE VANDAL PROTECTION ELEVATION-SPAN 1



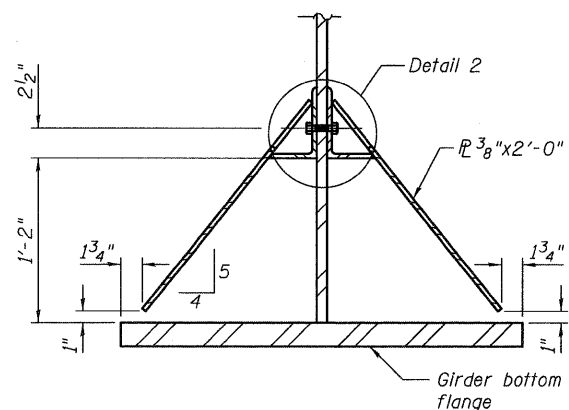
BOTTOM FLANGE VANDAL PROTECTION ELEVATION-SPAN 5



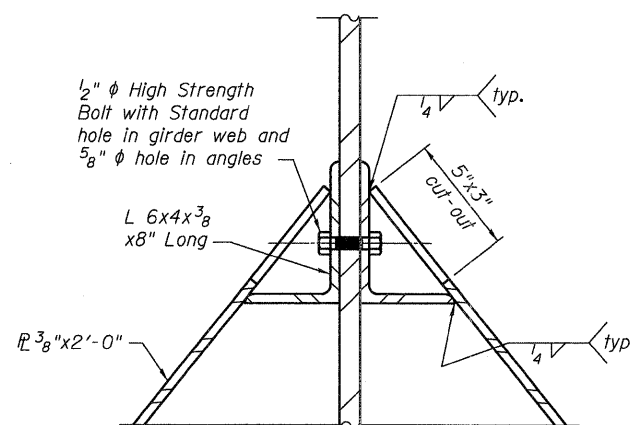
SECTION A-A



DETAIL 1



SECTION B-B



DETAIL 2

NOTES:

1. For General Notes see sheet 3 of 133.
2. Cost of bottom flange protection included with Furnishing and Erecting Structural Steel, Lump Sum.
3. All plates and shapes for bottom flange protection shall be AASHTO M 270 Grade 50W.

c:\pwworking\homa\d054904\0600345-76A91-065-FRD.dgn

3/15/2011 2:17:21 PM



USER NAME = jmgus
 FILE NAME = 0600345-76A91-065-FRD.DGN
 PLOT SCALE = NONE
 PLOT DATE = 3/18/2011

DESIGNED - BWC
 CHECKED - LGP
 DRAWN - JM
 CHECKED - BSK

REVISED -
 REVISED -
 REVISED -
 REVISED -

**STATE OF ILLINOIS
 DEPARTMENT OF TRANSPORTATION**

**STEEL DETAILS - BOTTOM FLANGE PROTECTION
 STRUCTURE NO. 060-0345**

BRIDGE SHEET NO. 65 OF 133 SHEETS

F.A.I. RTE.	SECTION	COUNTY	TOTAL SHEETS	SHEET NO.
270	60-1B-1	MADISON	712	444
CONTRACT NO. 76A91				
ILLINOIS FED. AID PROJECT				