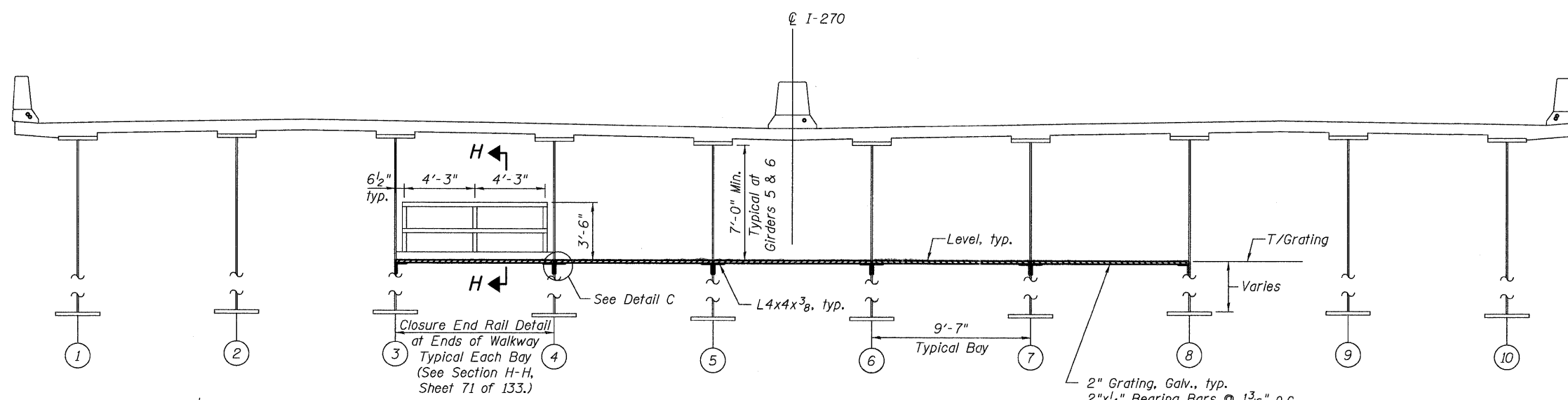
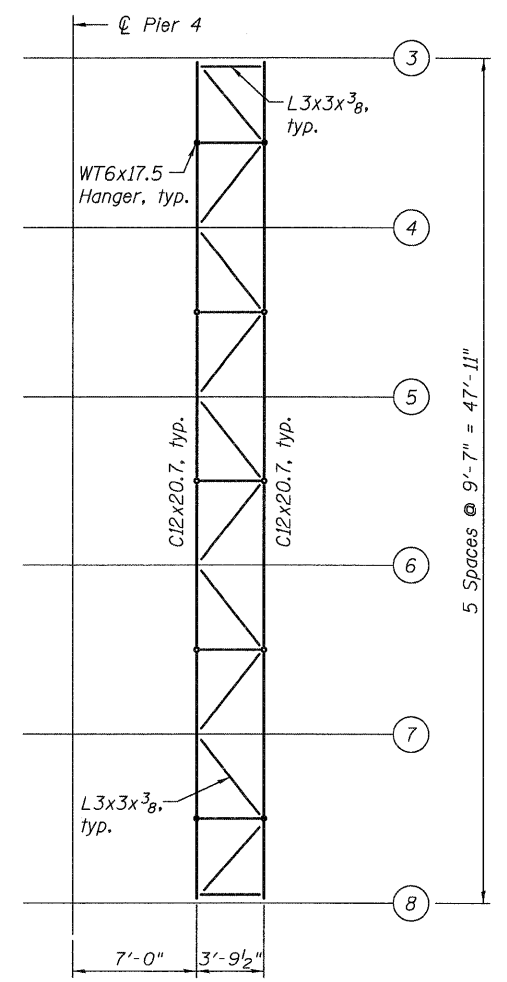


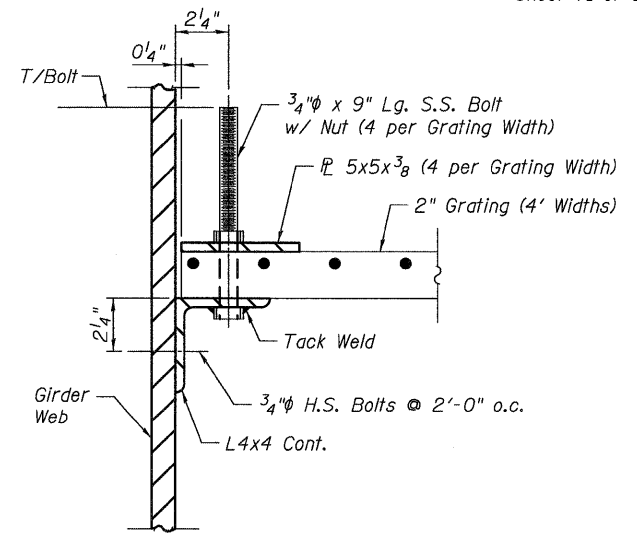
INSPECTION WALKWAY PLAN



SECTION A-A
Inspection Walkway Typical Section
(Looking East)



DETAIL B
Crossover Framing Plan Below Walkway
Crossover at Pier 4 shown, Pier 1 Similar



DETAIL C

- Notes:**
1. All structural steel for inspection walkway (except grating) shall be AASHTO M270 Grade 50W.
 2. Bolts shall be 3/4 in. diameter, holes 13/16 in. diameter, unless otherwise noted.
 3. Nuts for grating shall be installed at the T/Bolt until all concrete decking is in place. Nuts shall then be tightened down to the 5x5 PL.
 4. Prior to future deck removal, the nuts securing the grating shall be loosened and raised to allow the grating to rotate.
 5. L4x4 & grating shall be cut at stiffener, connection plate, cross frame and drainage pipe locations. See sheet 71 of 133 for typical details.
 6. S.S. indicates stainless steel.

BILL OF MATERIAL

ITEM	UNIT	TOTAL
Furnishing and Erecting Structural Steel	Pound	195,000
Metal Grating	L. Sum	1